

Primary Care Practitioners
(Family Practice)

Indigenous Cancer Care

Supportive Care

(Counselling, Psychiatry, Nutrition, Speech Language Pathology, Physiotherapy, Pain & Symptom Management/Palliative Care)

This figure represents a general pathway of care that most people with cancer will experience. It shows

- The major phases of a cancer journey
- How a person might progress through each phase
- Key supportive services that are available throughout each person's cancer journey

Please visit the [Clinical Pathways Web](#) page for

- Tumour Group Clinical Pathways
- Patient Companion Guide
- Methodology Reports

Target Population

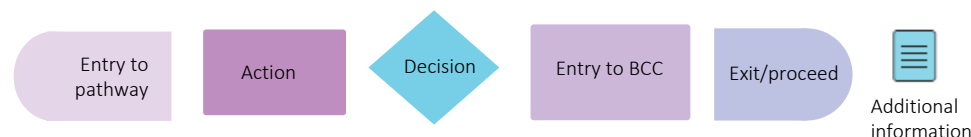
The target population for this pathway include health care providers such as primary care practitioners, oncologists, specialists, nurses, and other members of a health care team including allied health providers. Healthcare administrators across BC Cancer and the health authorities may also benefit from this resource for systems and operational planning.

Pathway Disclaimer

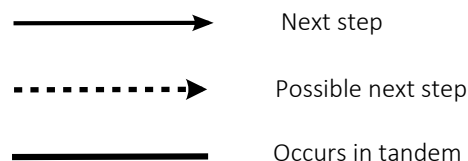
This pathway is an informational resource, intended to provide a high-level overview of the treatment journey a patient in British Columbia may receive. This pathway is not a substitute for medical advice and clinical judgment is still required as not all care trajectories will follow the proposed steps outlined in the pathway. This resource may not reflect all available evidence as research continues to evolve rapidly and BC Cancer is not responsible for any incomplete information. Furthermore, BC Cancer and those involved in developing this pathway are not liable for any incidental or consequential outcomes related to the information in this pathway. Anyone using the information provided in this pathway does so at their own risk.

Pathway Map Legend

Shape Guide



Line Guide



Pathway Map Considerations

This pathway is intended as a high-level resource and therefore does not include specific recommendations on specific systemic therapy protocols or radiation therapy doses. Instead, additional information can be sought via the inserted hyperlinks to resources that may aid a clinician in their treatment planning. The level of detail for each pathway was guided by the tumor group lead and intentionally kept high-level and represents the overall ideal pathway of care for a patient in general. Each patient will have individual needs and each cancer centre may have variation in the way care is delivered, but overall the intent was to represent the pathway that the majority of patients will follow.

General Resources

Indigenous Patient Navigator Referral Form(1): <http://www.phsa.ca/aboriginal-health-site/Documents/IPN%20Fillable%20Referral%20Form.pdf>

Supportive Care(2): <http://www.bccancer.bc.ca/our-services/services/supportive-care>

Compassionate Access Program (CAP)(3): <https://cap.phsa.ca/>

Head & Neck Chemotherapy Protocols(4): <http://www.bccancer.bc.ca/health-professionals/clinical-resources/chemotherapy-protocols/head-neck#Protocols>

Manufacturer Patient Assistance Programs(5): <http://www.bccancer.bc.ca/systemic-therapy-site/Documents/Policy%20and%20Forms/Patient%20assistance%20programs.pdf>

BC Cancer Research Clinical Trials(6): <https://www.bccrc.ca/dept/cid/clinical-trials>

Smoking Cessation Program(7): <http://www.bccancer.bc.ca/health-professionals/clinical-resources/smoking-cessation-program>

Alcohol Reduction(8): <http://www.bccancer.bc.ca/prevent/alcohol/reduce-your-risk>

MDC Referral Form(9): <http://www.bccancer.bc.ca/books/Documents/Clinical%20Care%20Pathways/Patient%20Conference%20Order.pdf>

Pharmacy Contact Info(10): <http://www.bccancer.bc.ca/health-professionals/clinical-resources/pharmacy#Contact--info>

Language & Translation Services (51): <http://www.phsa.ca/health-professionals/professional-resources/language-services/translation>

Abbreviations

ACR-TIRADS: American College of Radiology - Thyroid Imaging Reporting & Data System

FNA: Fine Needle Aspiration

LEAF: Late Effects, Assessment and Follow-Up

MDC: Multidisciplinary Conference/Discussion

MRP: Most Responsible Provider

PCP: Primary Care Provider

PFC: Patient & Family Counseling

PSMPC: Pain & Symptom Management & Palliative Care

RAI: Radioactive Iodine

RT: Radiation Therapy

ST: Systemic Therapy

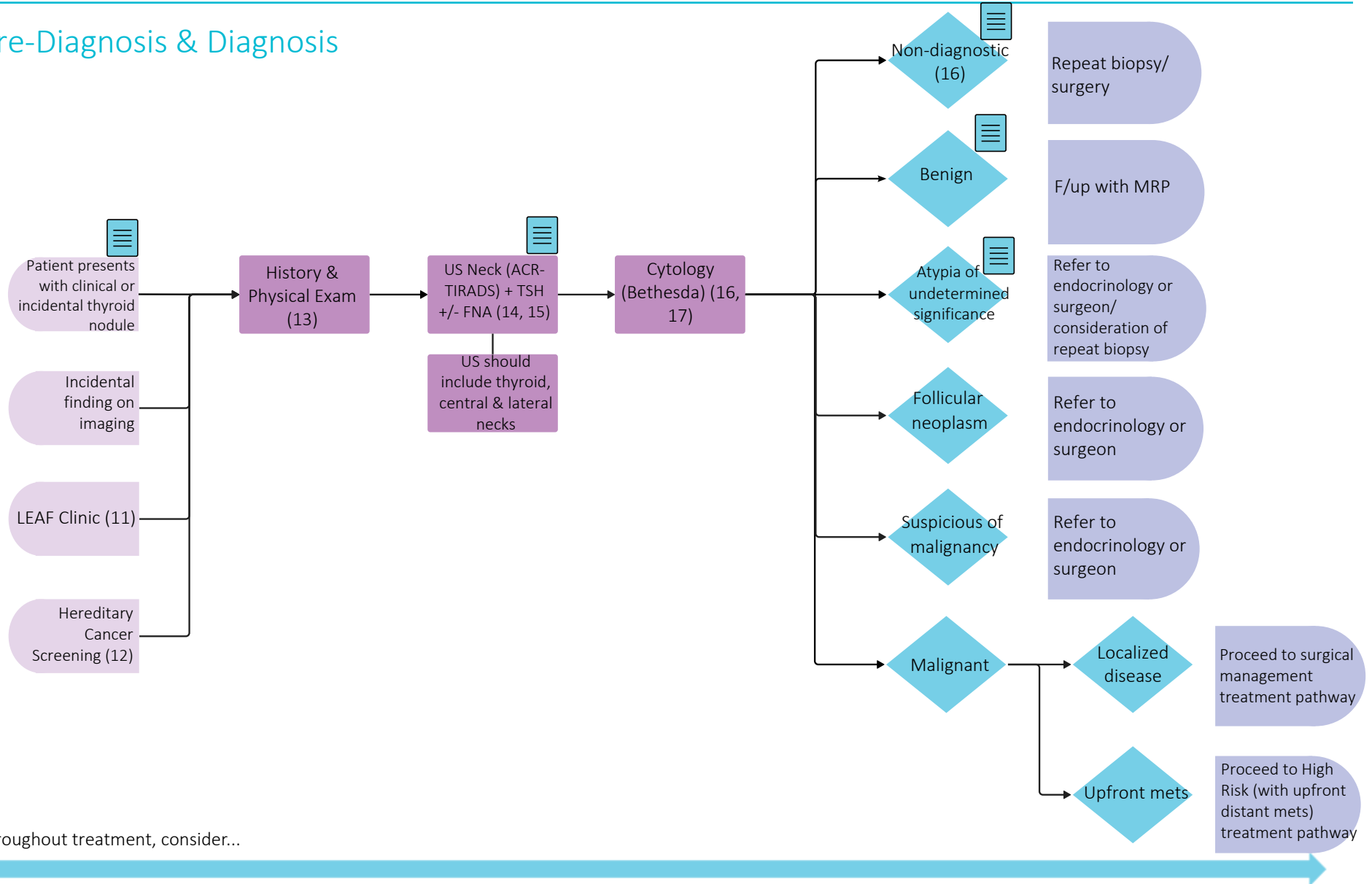
TSH: Thyroid Stimulating Hormone

Additional Information

To learn more about how the Clinical Care Pathways are developed, visit the [Methodology Report](#).

Other Tumour Group Clinical Care Pathways can be found on the [BC Cancer Website](#).

Pre-Diagnosis & Diagnosis

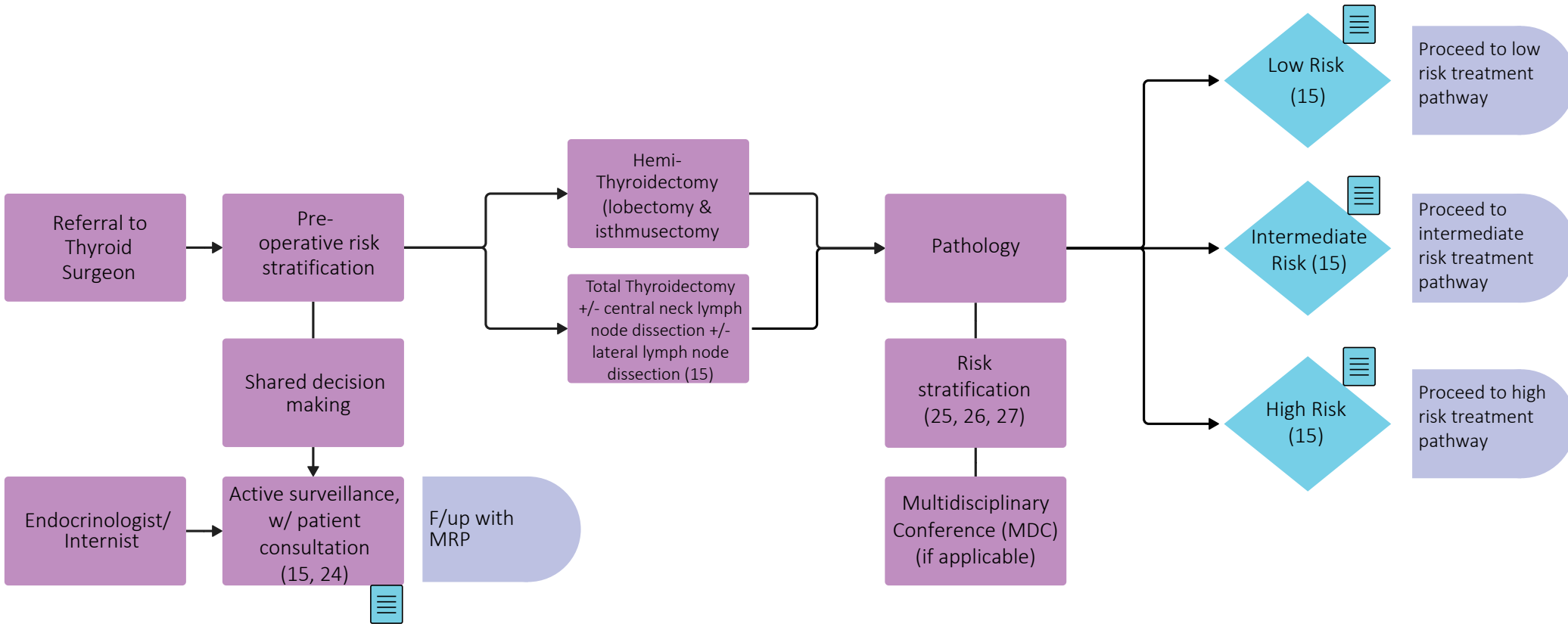


Throughout treatment, consider...

Regular symptom & performance status assessment (18); Supportive care (2, 19); Sexual & reproductive health (20, 21, 22); Co-morbidity management & medication review; Risk factor mitigation; Clinical trials (where applicable) (6); Goals of care (23); Cultural safety (1); Involvement of PCP

Treatment: Surgical Management

Based on ATA risk stratification

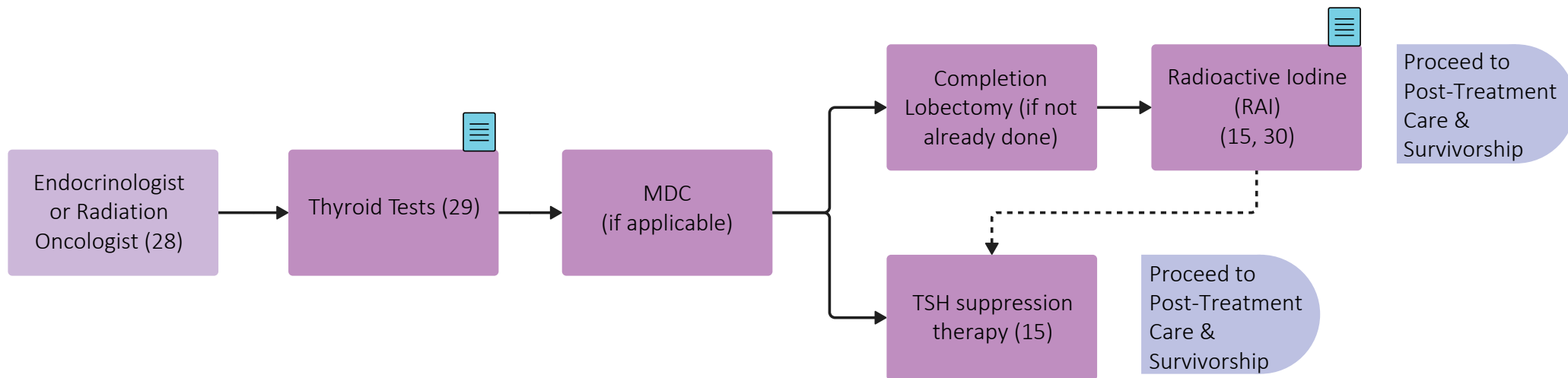


Throughout treatment, consider...



Regular symptom & performance status assessment (18); Supportive care (2, 19); Sexual & reproductive health (20, 21, 22); Co-morbidity management & medication review; Risk factor mitigation; Clinical trials (where applicable)(6); Goals of care (23); Cultural safety (1); Involvement of PCP

Treatment: ATA Low Risk

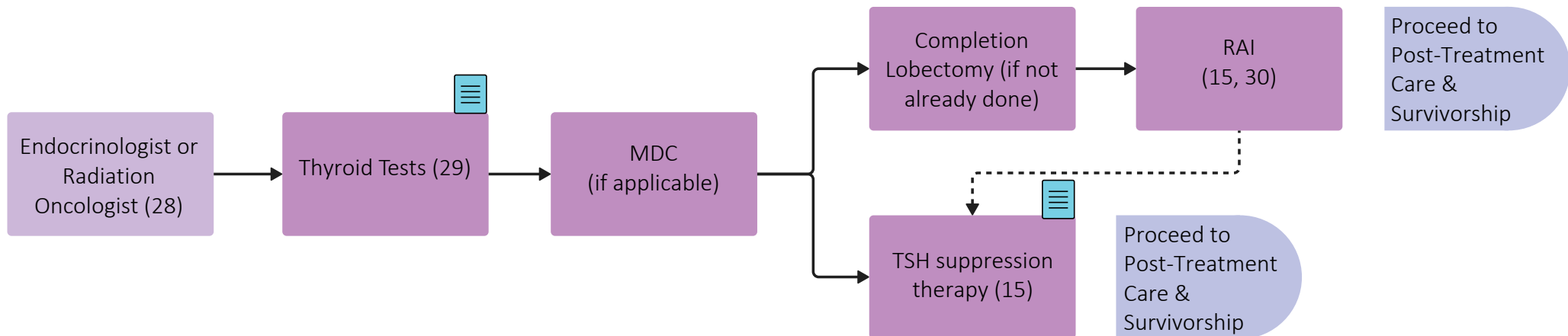


Throughout treatment, consider...



Regular symptom & performance status assessment (18); Supportive care (2, 19); Sexual & reproductive health (20, 21, 22); Co-morbidity management & medication review; Risk factor mitigation; Clinical trials (where applicable)(6); Goals of care (23); Cultural safety (1); Involvement of PCP

Treatment: ATA Intermediate Risk



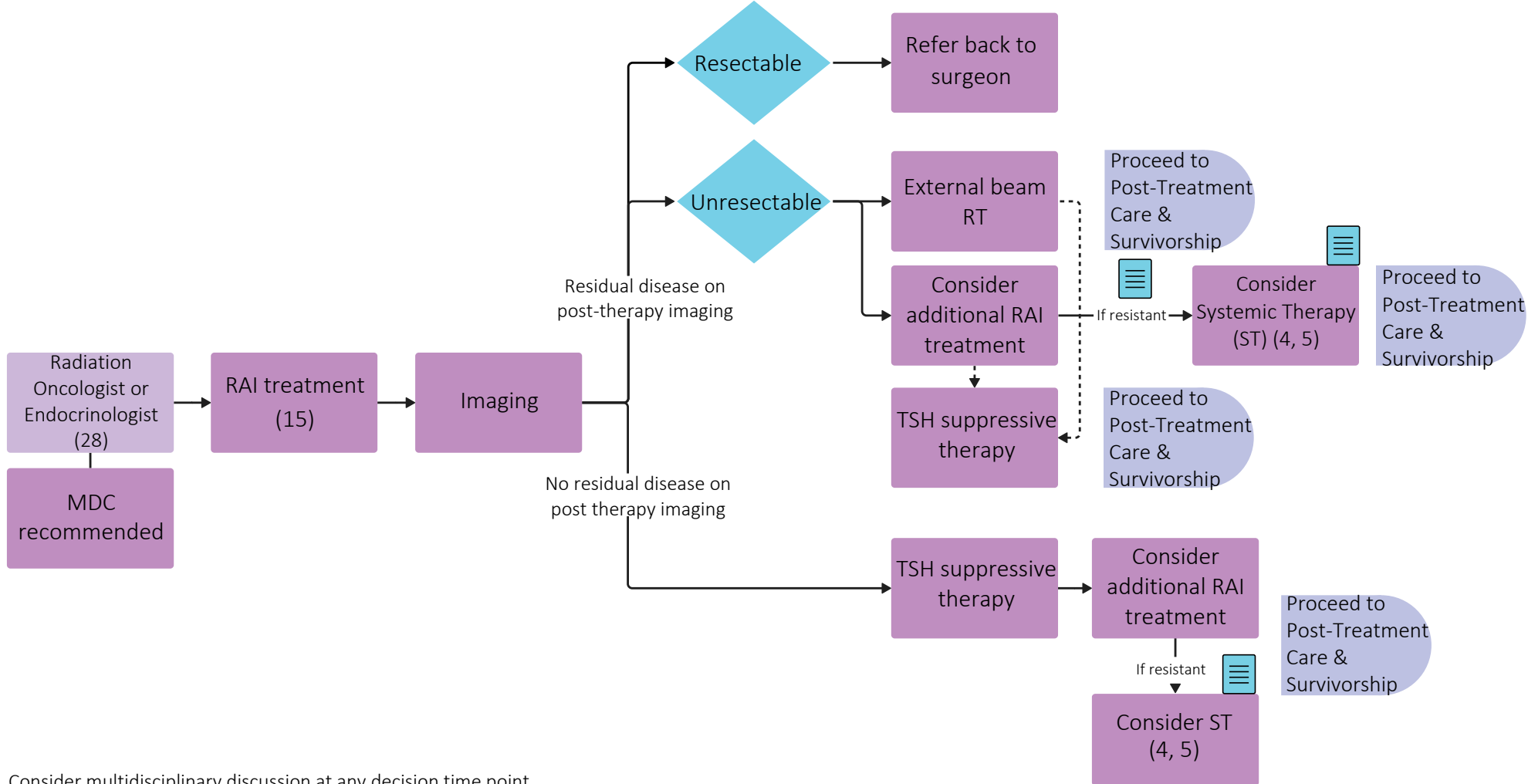
Throughout treatment, consider...



Regular symptom & performance status assessment (18); Supportive care (2, 19); Sexual & reproductive health (20, 21, 22); Co-morbidity management & medication review; Risk factor mitigation; Clinical trials (where applicable)(6); Goals of care (23); Cultural safety (1); Involvement of PCP

Head & Neck Tumour Group - Well Differentiated Thyroid Pathway

Treatment: ATA High Risk (without distant mets)

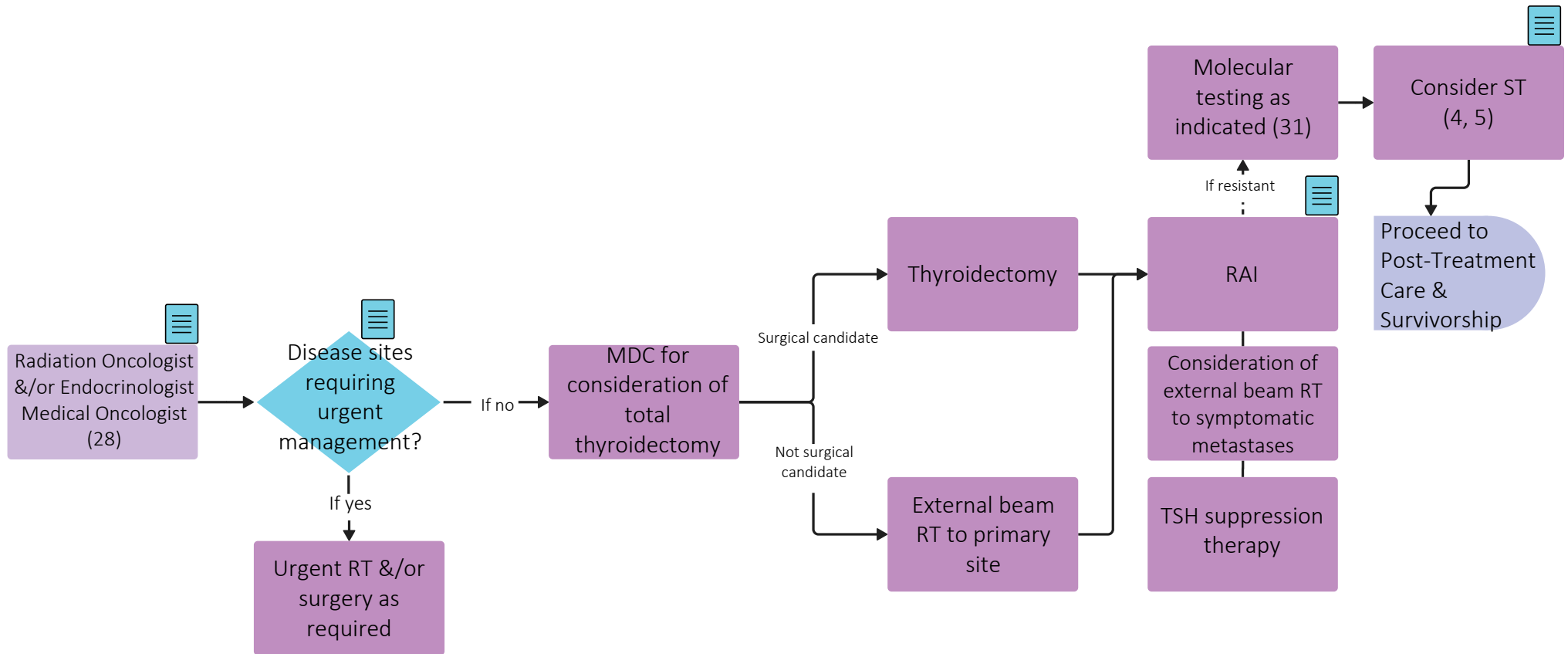


Consider multidisciplinary discussion at any decision time point

Throughout treatment, consider...

Regular symptom & performance status assessment (18); Supportive care (2, 19); Sexual & reproductive health (20, 21, 22); Co-morbidity management & medication review; Risk factor mitigation; Clinical trials (where applicable)(6); Goals of care (23); Cultural safety (1); Involvement of PCP

Treatment: ATA High Risk (with upfront distant mets)

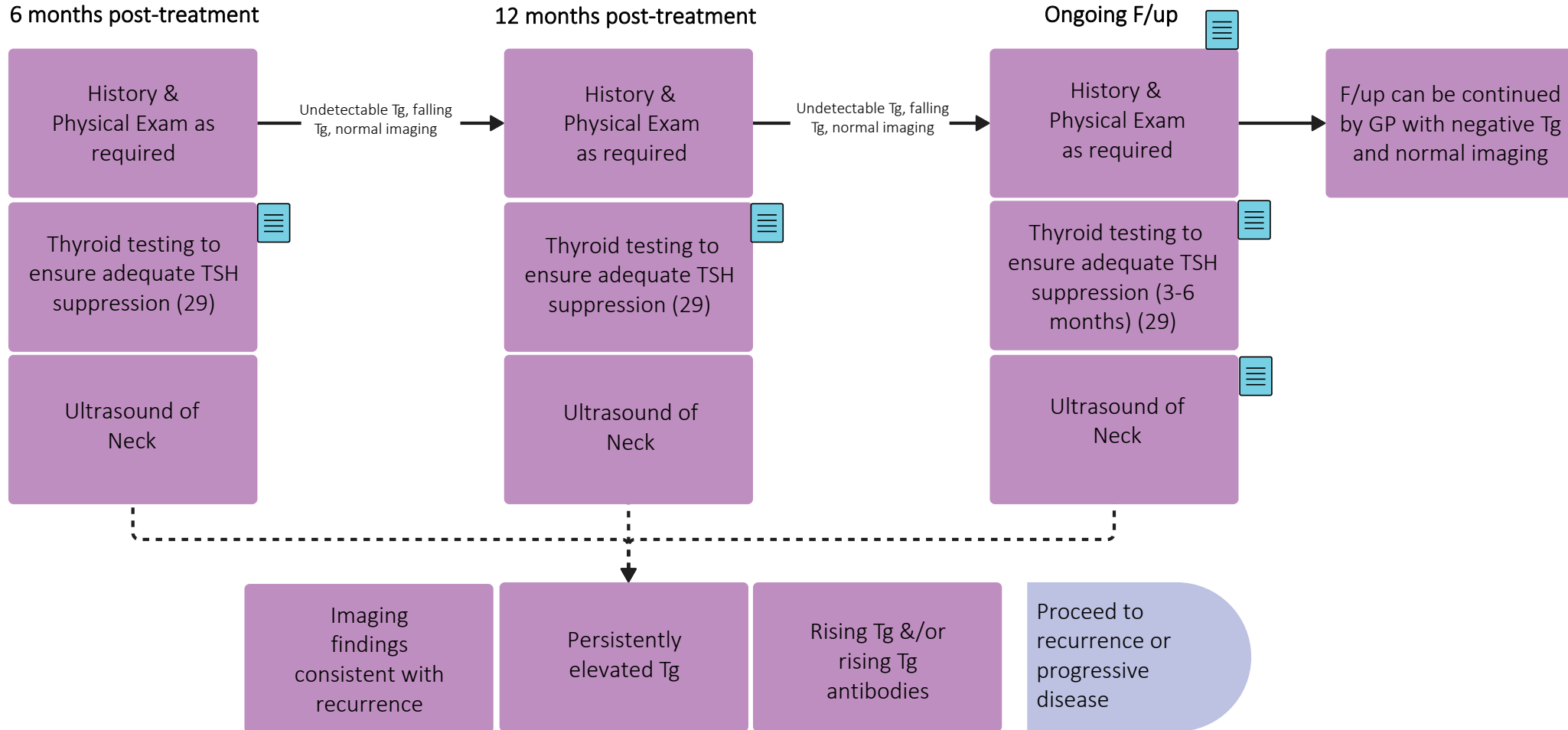


Consider multidisciplinary discussion at any decision time point

Throughout treatment, consider...

Regular symptom & performance status assessment (18); Supportive care (2, 19); Sexual & reproductive health (20, 21, 22); Co-morbidity management & medication review; Risk factor mitigation; Clinical trials (where applicable)(6); Goals of care (23); Cultural safety (1); Involvement of PCP

Post-Treatment Care & Survivorship

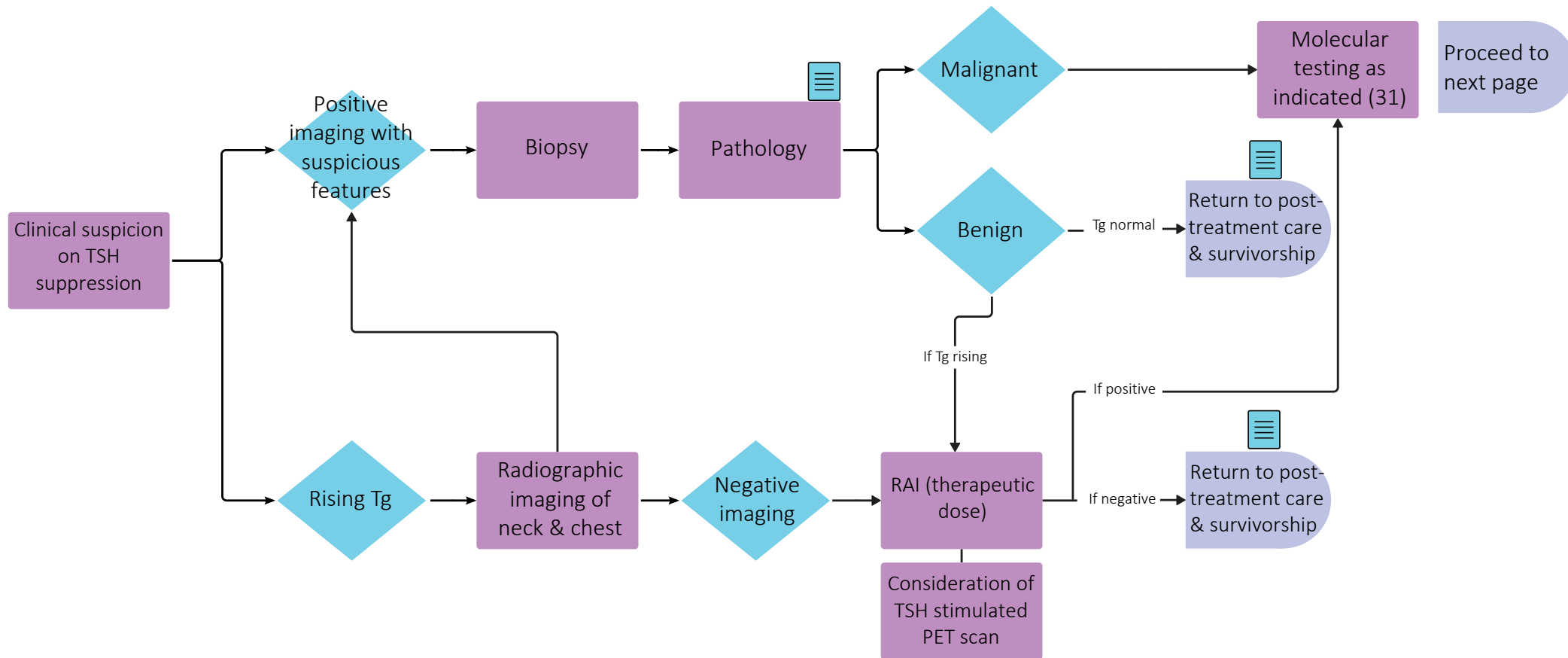


Throughout treatment, consider...



Regular symptom & performance status assessment (18); Supportive care (2, 19); Sexual & reproductive health (20, 21, 22); Co-morbidity management & medication review; Risk factor mitigation; Clinical trials (where applicable)(6); Goals of care (23); Cultural safety (1); Involvement of PCP

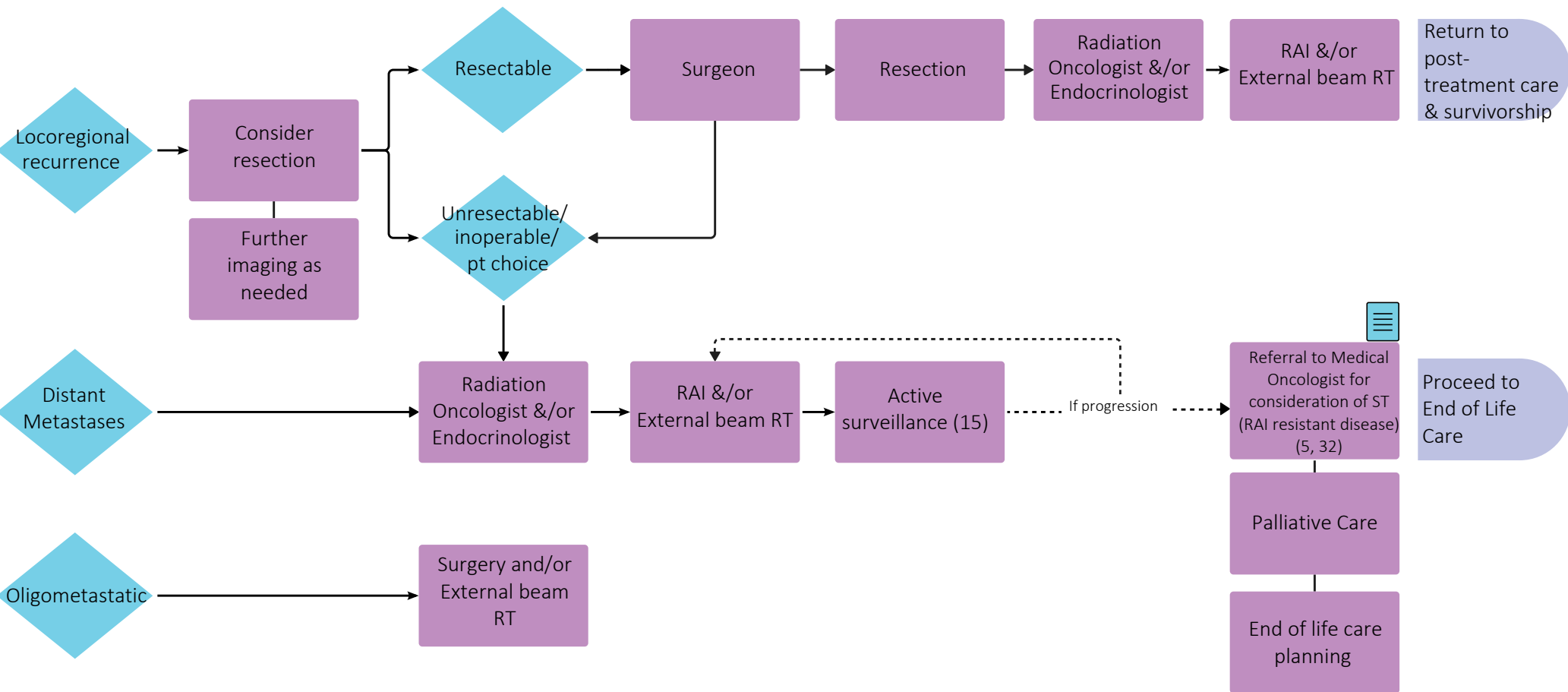
Recurrence or Progressive Disease (Pg. 1)



Throughout treatment, consider...

Regular symptom & performance status assessment (18); Supportive care (2, 19); Sexual & reproductive health (20, 21, 22); Co-morbidity management & medication review; Risk factor mitigation; Clinical trials (where applicable)(6); Goals of care (23); Cultural safety (1); Involvement of PCP

Recurrence or Progressive Disease (Pg. 2)

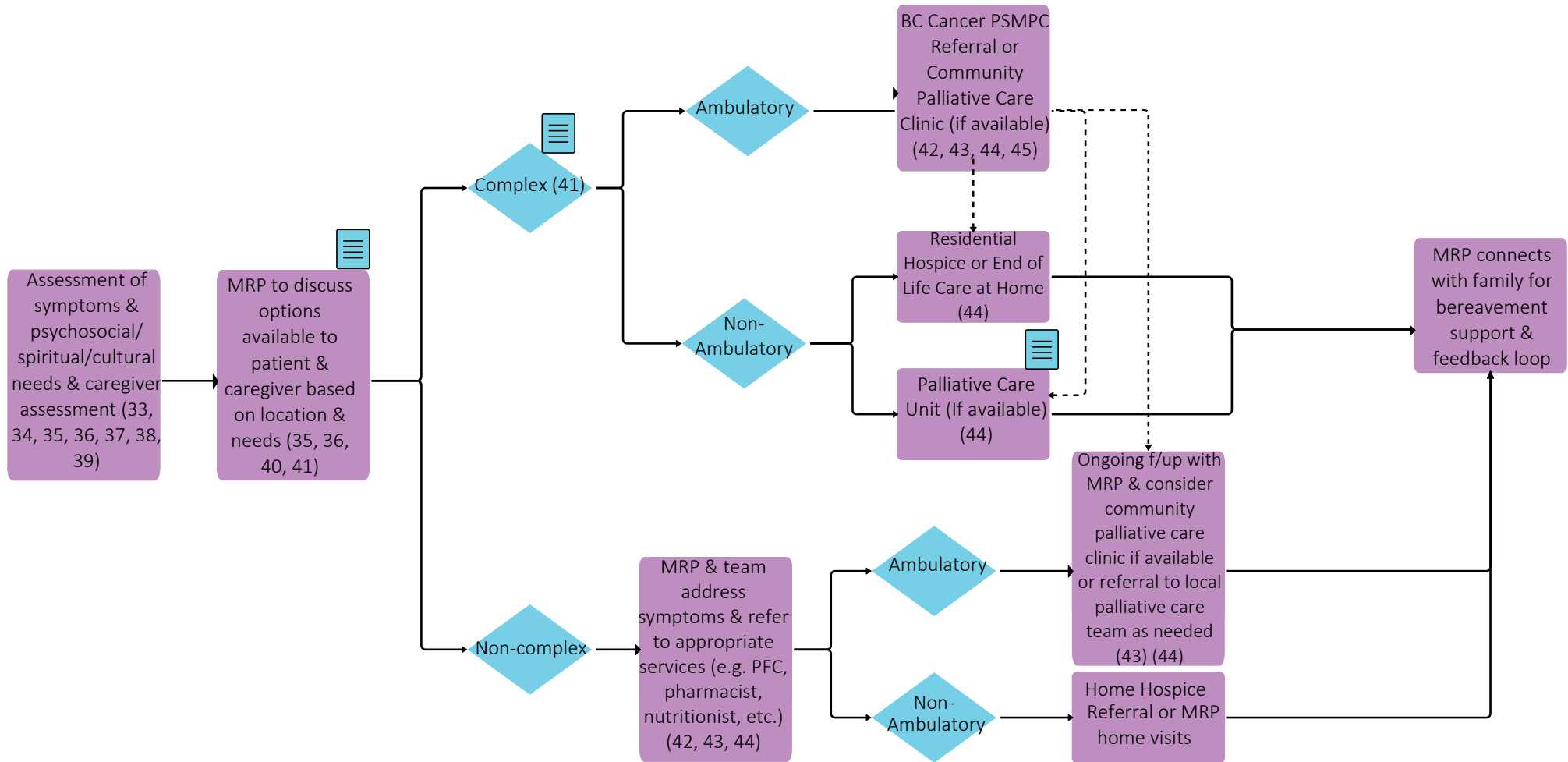


Consider multidisciplinary discussion at any decision time point

Throughout treatment, consider...

Regular symptom & performance status assessment (18); Supportive care (2, 19); Sexual & reproductive health (20, 21, 22); Co-morbidity management & medication review; Risk factor mitigation; Clinical trials (where applicable)(6); Goals of care (23); Cultural safety (1); Involvement of PCP

End of Life Care



Throughout treatment, consider...

Goals of Care Discussions & Consideration of Cultural Safety (1, 40, 41, 46, 47, 48, 49, 50)

Subject Matter Expert Working Group & COIs

Nicole Chau, Project Lead, Medical Oncologist
Bayer, Lilly, EMD Serono, Roche, BMS Beigene Roche ERASCA

Sarah Hamilton, Project Lead, Radiation Oncologist
No disclosures

Sam Wiseman, Project Lead, General Surgeon
No disclosures

Donald Anderson, Surgical Oncologist
No disclosures

Scott Durham, Surgical Oncologist
No disclosures

Sabrina Gill, Endocrinologist
BI, Lilly, Amgen, Merck

Katie Jasper, Radiation Oncologist
No disclosures

Will Jiang, Radiation Oncologist
No disclosures

Angela Lin, Radiation Oncologist
No disclosures

Jinesa Moodley, Pathologist
No disclosures

Tony Ng, Pathologist
Bayer, Roche

Eitan Prisman, Surgical Oncologist
No disclosures

George Sexsmith, Nuclear Medicine
No disclosures

Angela Thermann, GPO
No disclosures

Eric Tran, Radiation Oncologist
No disclosures

Jonn Wu, Radiation Oncologist
Precision RDX

Allison Ye, Radiation Oncologist
AstraZeneca

Pathway Program Team

Bhatia, Yashpal Tumour Group Coordinator, Provincial Programs
Currie, Tammy Executive Director, Provincial Programs
Ladak, Amilya Policy Analyst, Tumour Groups
Loudon, James Director, Provincial Programs
Nanji, Shaifa Manager, Tumour Groups
Simmons, Christine Tumour Group Council Chair
Wai, Elaine Senior Executive Director, Medical Affairs and Quality

Other Stakeholders

Family Practice & GPO
 Indigenous Cancer Control
 Nursing Community of Practice (NCoP)
 Patient and Family Experience Team & Supportive Care
 Radiation Therapists
 Surgical Oncology Network
 Provincial Pharmacy, Pathology & Medical Imaging Teams

Appendix

1. <http://www.phsa.ca/aboriginal-health-site/Documents/IPN%20Fillable%20Referral%20Form.pdf>
2. <http://www.bccancer.bc.ca/our-services/services/supportive-care>
3. <https://cap.phsa.ca/>
4. <http://www.bccancer.bc.ca/health-professionals/clinical-resources/chemotherapy-protocols/head-neck>
5. <http://www.bccancer.bc.ca/systemic-therapy-site/Documents/Policy%20and%20Forms/Patient%20assistance%20programs.pdf>
6. <https://www.bccrc.ca/dept/cid/clinical-trials>
7. <http://www.bccancer.bc.ca/health-professionals/clinical-resources/smoking-cessation-program>
8. <http://www.bccancer.bc.ca/prevent/alcohol/reduce-your-risk>
9. <http://www.bccancer.bc.ca/books/Documents/Clinical%20Care%20Pathways/Patient%20Conference%20Order.pdf>
10. <http://www.bccancer.bc.ca/health-professionals/clinical-resources/pharmacy#Contact--info>
11. <http://www.bccancer.bc.ca/our-services/services/late-effects-assessment-follow-up>
12. <http://www.bccancer.bc.ca/our-services/services/hereditary-cancer>
13. <http://www.raceconnect.ca/contact-us/>
14. [https://www.jacr.org/article/S1546-1440\(17\)30186-2/fulltext](https://www.jacr.org/article/S1546-1440(17)30186-2/fulltext)
15. <https://www.liebertpub.com/doi/pdf/10.1089/thy.2015.0020>
16. <https://www.liebertpub.com/doi/10.1089/thy.2023.0141>
17. [https://www.jacr.org/article/S1546-1440\(17\)30186-2/fulltext](https://www.jacr.org/article/S1546-1440(17)30186-2/fulltext)
18. <https://www.uptodate.com/contents/image?imageKey=HEME%2F72901>
19. <http://www.bccancer.bc.ca/our-services/services/support-programs>
20. <https://www.olivefertility.com/referring-physicians>
21. <https://www.pacificfertility.ca/physician-resources>
22. <http://www.bccancer.bc.ca/health-info/coping-with-cancer/managing-symptoms-side-effects/sexual-health>
23. <http://www.bccancer.bc.ca/new-patients-site/Documents/ACP-goals-of-care-orders.pdf>
24. <https://www.thyroid.org/professionals/ata-professional-guidelines/>
25. <https://www.liebertpub.com/doi/full/10.1089/thy.2017.0309>
26. [https://www.uclahealth.org/medical-services/surgery/endocrine-surgery/patient-resources/patient-education/macis-score-calculator#:~:text=MACIS%20%3D%203.1%20\(if%20aged%20less,\(if%20distant%20metastases%20present\)](https://www.uclahealth.org/medical-services/surgery/endocrine-surgery/patient-resources/patient-education/macis-score-calculator#:~:text=MACIS%20%3D%203.1%20(if%20aged%20less,(if%20distant%20metastases%20present))
27. <https://www.thyroid.org/professionals/calculators/thyroid-cancer-staging-calculator/>
28. <http://www.bccancer.bc.ca/health-professionals-site/Documents/Patient-Referral-Form.pdf>
29. <https://www.thyroid.org/thyroid-function-tests/>
30. <https://www.thyroid.org/radioactive-iodine/>
31. <https://cancergeneticslab.ca/requisitions/>
32. <http://www.bccancer.bc.ca/health-professionals/clinical-resources/chemotherapy-protocols/head-neck#Other%20>
33. <http://www.bccancer.bc.ca/our-services/centres-clinics/bc-cancer-vancouver/epicc>
34. https://www2.gov.bc.ca/assets/gov/health/practitioner-pro/bc-guidelines/palliative1_appendix_a.pdf
35. <https://www.bc-cpc.ca/publications/symptom-management-guidelines/>
36. <https://www2.gov.bc.ca/gov/content/health/practitioner-professional-resources/bc-guidelines/palliative-care>

Appendix

37. <https://www2.gov.bc.ca/gov/content/health/practitioner-professional-resources/pharmacare/prescribers/plan-p-bc-palliative-care-benefits-program>
38. <http://www.bccancer.bc.ca/our-services/services/indigenous-cancer-control>
39. <http://www.bccancer.bc.ca/books/Documents/Clinical%20Care%20Pathways/Revised%20PSMPC%20Questionnaire%20Pink%20Form%202020-21.pdf>
40. <http://www.bccancer.bc.ca/new-patients-site/Documents/SeriousIllnessConversationGuideCard.pdf>
41. <http://www.phsa.ca/health-info/medical-assistance-in-dying>
42. <http://www.bccancer.bc.ca/managing-symptoms-site/Documents/PSMPC-Referral-Form-for-All-BC-Cancer-Centres.pdf>
43. <http://www.bccancer.bc.ca/our-services/services/supportive-care/pain-symptom-management#What--we--do>
44. https://vancouver.pathwaysbc.ca/service_categories/24
45. http://www.bccancer.bc.ca/new-patients-site/Documents/MIPPC_Referral_Form.pdf
46. <http://www.bccancer.bc.ca/new-patients-site/Documents/Goals%20of%20Care%20Orders%20Form%20June%202018%20Final.pdf>
47. <https://www2.gov.bc.ca/assets/gov/people/seniors/health-safety/pdf/myvoice-advancecareplanningguide.pdf>
48. <https://www2.gov.bc.ca/gov/content/family-social-supports/seniors/health-safety/advance-care-planning>
49. <http://www.bccancer.bc.ca/managing-symptoms-site/Documents/When-Life-Nearing-its-End.pdf>
50. <http://www.bccancer.bc.ca/new-patients-site/Documents/ACP-tips-for-oncology-professionals.pdf>
51. <http://www.phsa.ca/health-professionals/professional-resources/language-services/translation>