

**Primary Care Practitioners**  
(Family Practice)

**Indigenous Cancer Care**

**Supportive Care**

(Counselling, Psychiatry, Nutrition, Speech Language Pathology, Physiotherapy, Pain & Symptom Management/Palliative Care)

This figure represents a general pathway of care that most people with cancer will experience. It shows

- The major phases of a cancer journey
- How a person might progress through each phase
- Key supportive services that are available throughout each person's cancer journey

Please visit the [Clinical Pathways](#) Web page for

- Tumour Group Clinical Pathways
- Patient Companion Guide
- Methodology Reports

## Target Population

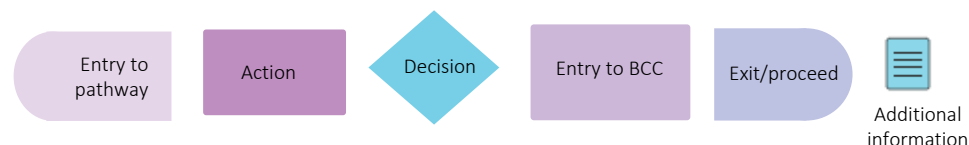
The target population for this pathway include health care providers such as primary care physicians, oncologists, specialists, nurses, and other members of a health care team including allied health providers. Healthcare administrators across BC Cancer and the health authorities may also benefit from this resource for systems and operational planning.

## Pathway Disclaimer

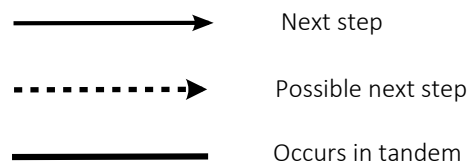
This pathway is an informational resource, intended to provide a high-level overview of the treatment journey a patient in British Columbia may receive. This pathway is not a substitute for medical advice and clinical judgment is still required as not all care trajectories will follow the proposed steps outlined in the pathway. This resource may not reflect all available evidence as research continues to evolve rapidly and BC Cancer is not responsible for any incomplete information. Furthermore, BC Cancer and those involved in developing this pathway are not liable for any incidental or consequential outcomes related to the information in this pathway. Anyone using the information provided in this pathway does so at their own risk.

## Pathway Map Legend

### Shape Guide



### Line Guide



## Pathway Map Considerations

This pathway is intended as a high-level resource and therefore does not include specific recommendations on specific systemic therapy protocols or radiation therapy doses. Instead, additional information can be sought via the inserted hyperlinks to resources that may aid a clinician in their treatment planning. The level of detail for each pathway was guided by the tumor group lead and intentionally kept high-level and represents the overall ideal pathway of care for a patient in general. Each patient will have individual needs and each cancer centre may have variation in the way care is delivered, but overall the intent was to represent the pathway that the majority of patients will follow.

## General Resources

**Indigenous Patient Navigator Referral Form (20)** : <http://www.phsa.ca/aboriginal-health-site/Documents/IPN%20Fillable%20Referral%20Form.pdf>

**Supportive Care (11)** : <http://www.bccancer.bc.ca/our-services/services/supportive-care>

**Compassionate Access Program (CAP) (53)** : <https://cap.phsa.ca/>

**GU Chemotherapy Protocols (29)** : <http://www.bccancer.bc.ca/health-professionals/clinical-resources/chemotherapy-protocols/genitourinary#Prostate>

**Manufacturer Patient Assistance Programs (30)** : <http://www.bccancer.bc.ca/systemic-therapy-site/Documents/Policy%20and%20Forms/Patient%20assistance%20programs.pdf>

**BC Cancer Research Clinical Trials (17)** : <https://www.bccrc.ca/dept/cid/clinical-trials>

**Smoking Cessation Program (54)** : <http://www.bccancer.bc.ca/health-professionals/clinical-resources/smoking-cessation-program>

**Alcohol Reduction (55)** : <http://www.bccancer.bc.ca/prevent/alcohol/reduce-your-risk>

---

## Abbreviations

**ADT**: Androgen deprivation therapy

**ARPI**: Androgen receptor pathway inhibition

**PSA**: Prostate specific antigen

**PCP**: Primary care provider

**DRE**: Digital rectal examination

**EBRT**: External beam radiation therapy

**MDC**: Multidisciplinary conference/discussion

**SBRT**: Stereotactic body radiation therapy

**ST**: Systemic therapy

**RT**: Radiation therapy

**HRR**: Homologous recombination repair

**MRP**: Most responsible provider

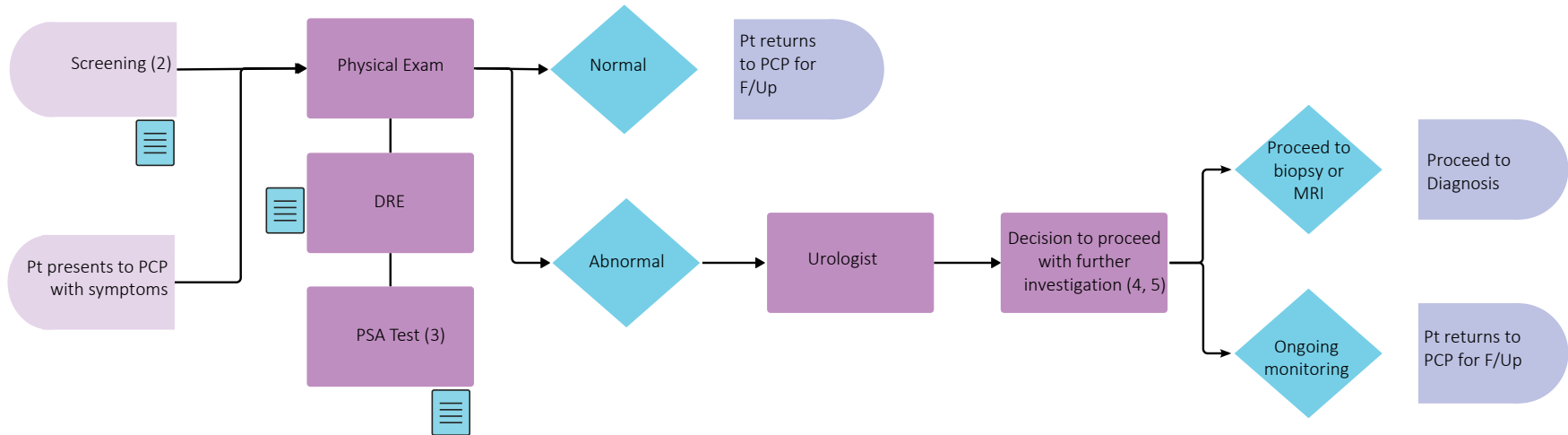
## Additional Information

To learn more about how the Clinical Care Pathways are developed, visit the [Methodology Report](#).

Other Tumour Group Clinical Care Pathways can be found on the [BC Cancer Website](#).

---

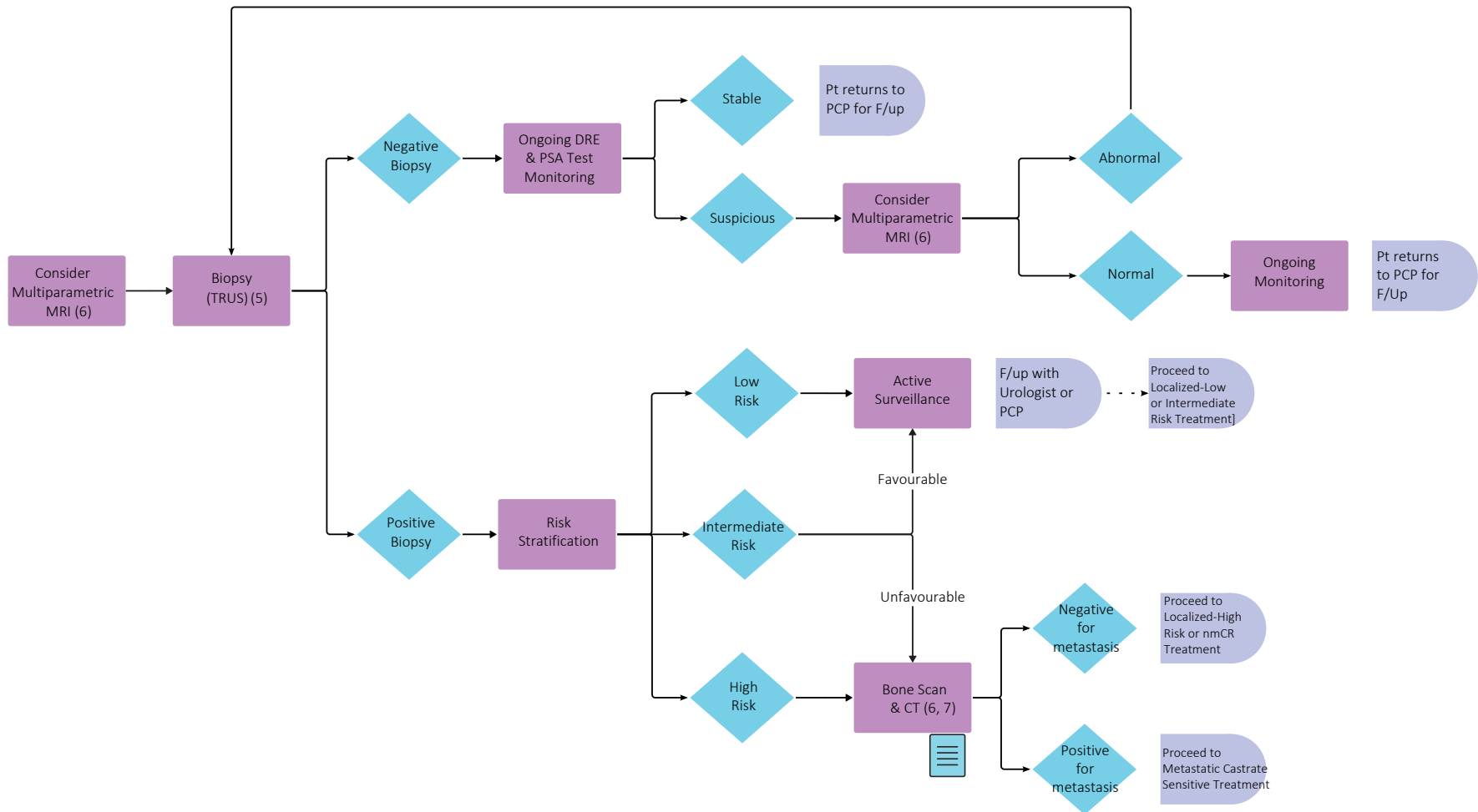
## Pre-Diagnosis



Throughout treatment, consider...

Regular symptom & performance assessment (8, 9, 10) ; Supportive care (11, 12, 13) Sexual health (14, 15, 16); Co-morbidity management & medication review; Risk factor mitigation; Clinical trials (17, 18) (where applicable); Goals of care (19) ; Cultural needs (20)

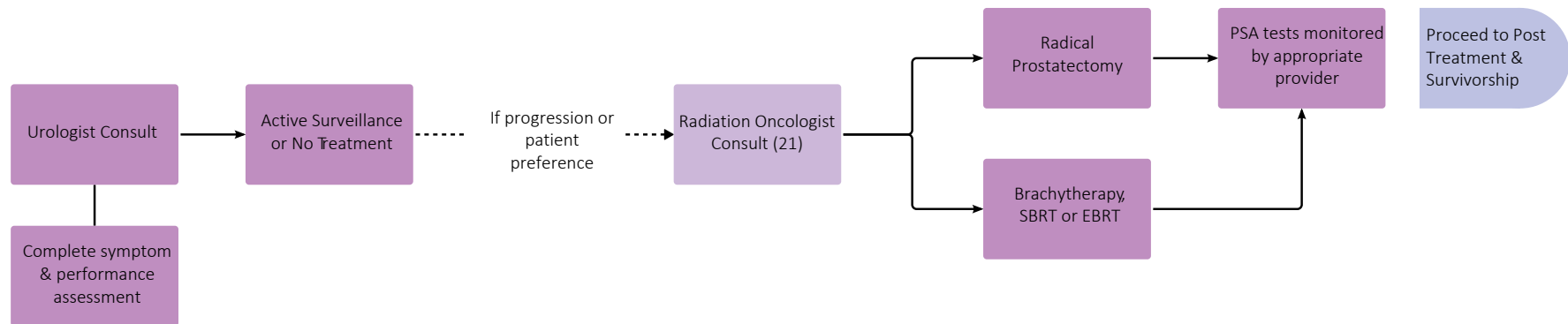
## Diagnosis



Throughout treatment, consider...

Regular symptom & performance assessment (8, 9, 10); Supportive care (11, 12, 13) Sexual health (14, 15, 16); Co-morbidity management & medication review; Risk factor mitigation; Clinical trials (17, 18) (where applicable); Goals of care (19); Cultural needs (20)

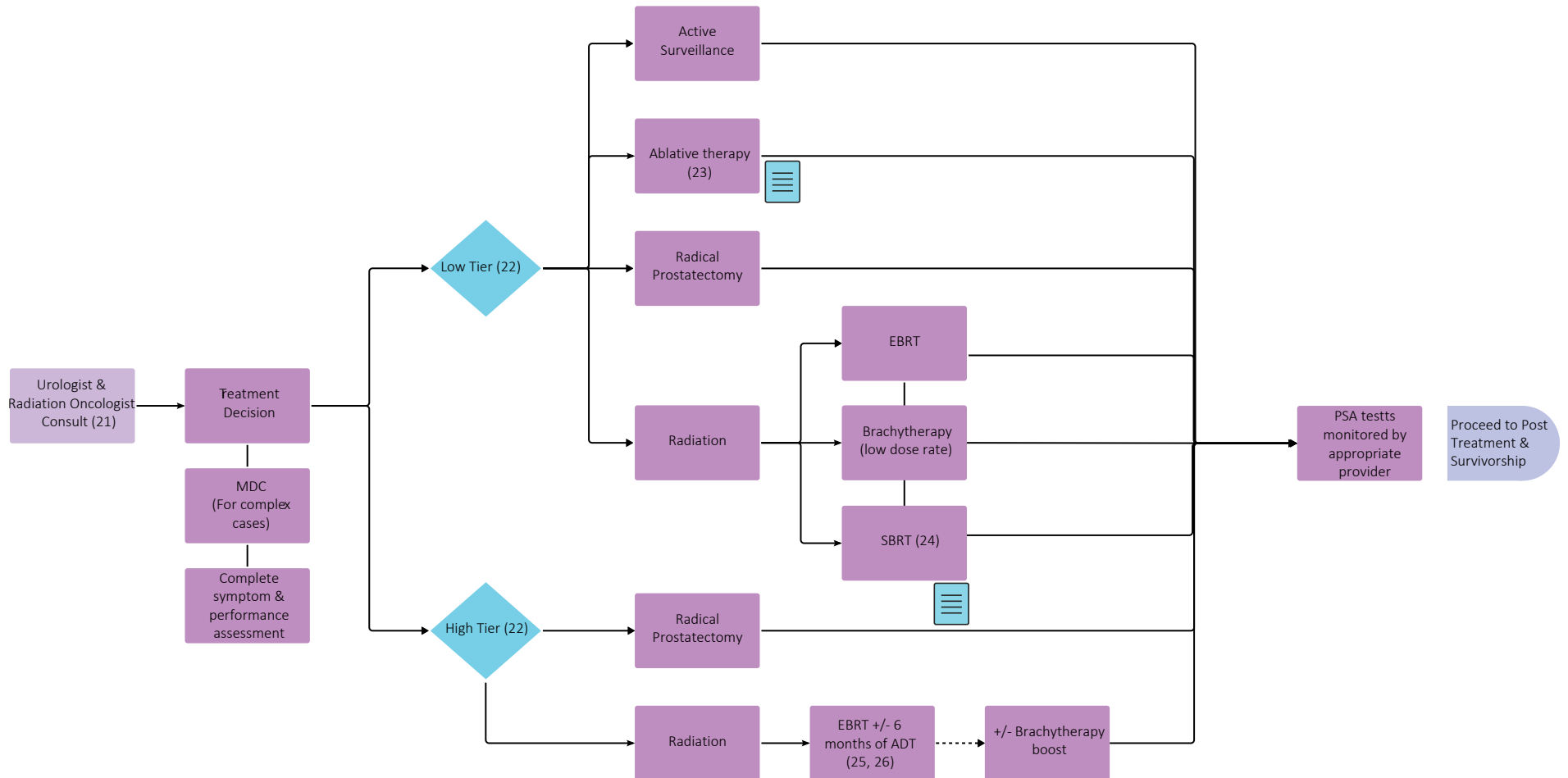
## Treatment (Localized - Low Risk)



Throughout treatment, consider...

Regular symptom & performance assessment (8, 9, 10); Supportive care (11, 12, 13) Sexual health (14, 15, 16); Co-morbidity management & medication review; Risk factor mitigation; Clinical trials (17, 18) (where applicable); Goals of care (19); Cultural needs (20)

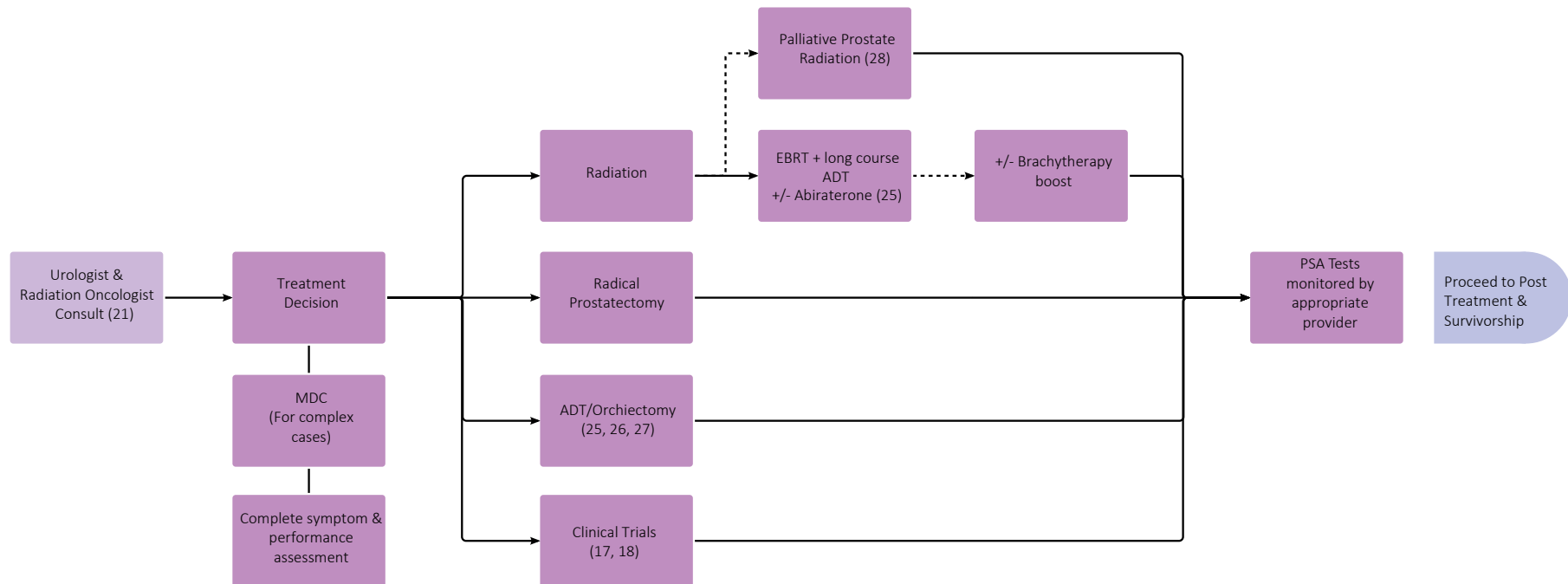
## Treatment (Localized - Intermediate Risk)



Throughout treatment, consider...

Regular symptom & performance assessment (8, 9, 10) ; Supportive care (11, 12, 13) Sexual health (14, 15, 16); Co-morbidity management & medication review; Risk factor mitigation; Clinical trials (17, 18) (where applicable); Goals of care (19) ; Cultural needs (20)

## Treatment (Localized - High Risk)

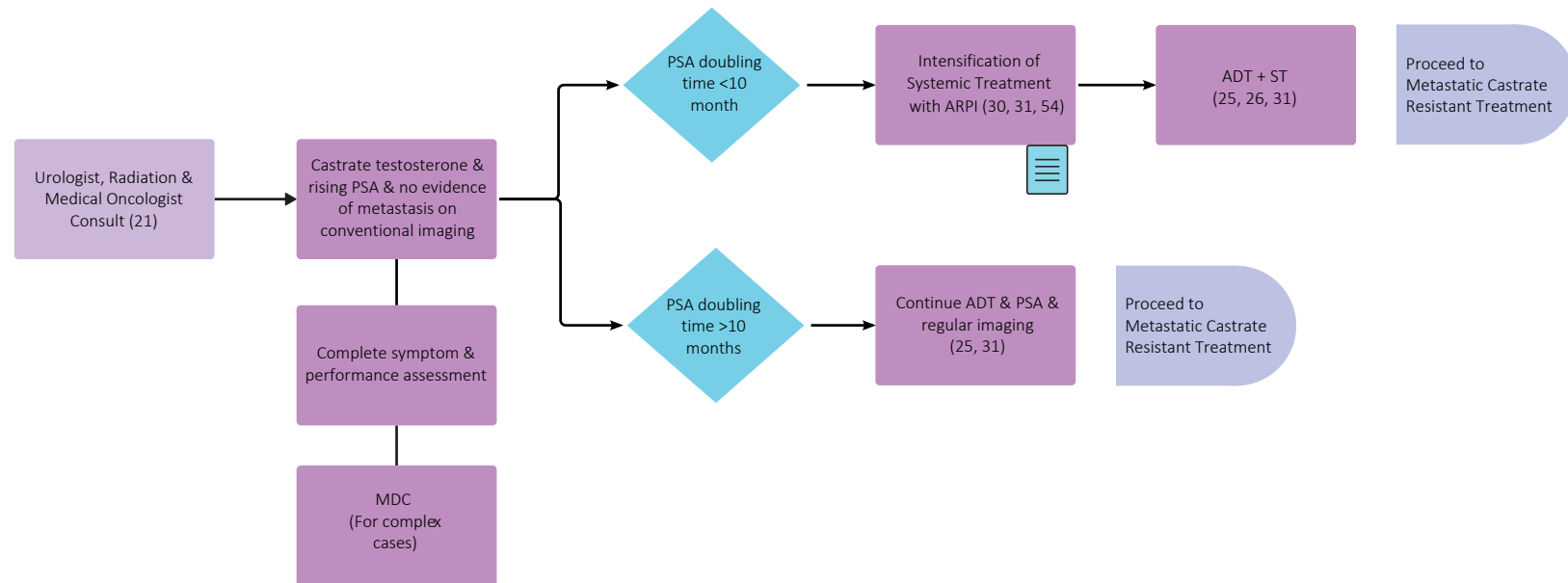


Throughout treatment, consider...

Regular symptom & performance assessment (8, 9, 10) ; Supportive care (11, 12, 13) Sexual health (14, 15, 16); Co-morbidity management & medication review; Risk factor mitigation; Clinical trials (17, 18) (where applicable); Goals of care (19) ; Cultural needs (20)



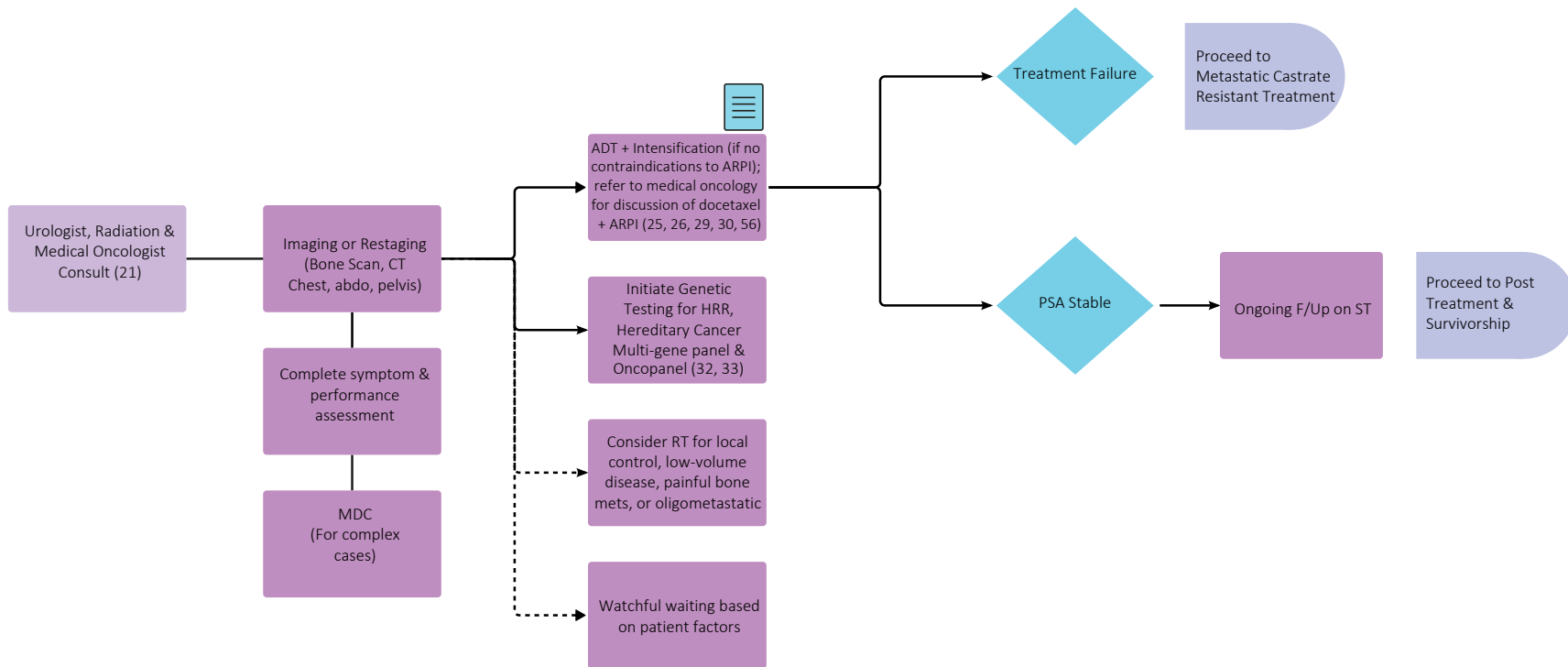
## Treatment (Non Metastatic - Castrate Resistant)



Throughout treatment, consider...

Regular symptom & performance assessment (8, 9, 10) ; Supportive care (11, 12, 13) Sexual health (14, 15, 16); Co-morbidity management & medication review; Risk factor mitigation; Clinical trials (17, 18) (where applicable); Goals of care (19) ; Cultural needs (20)

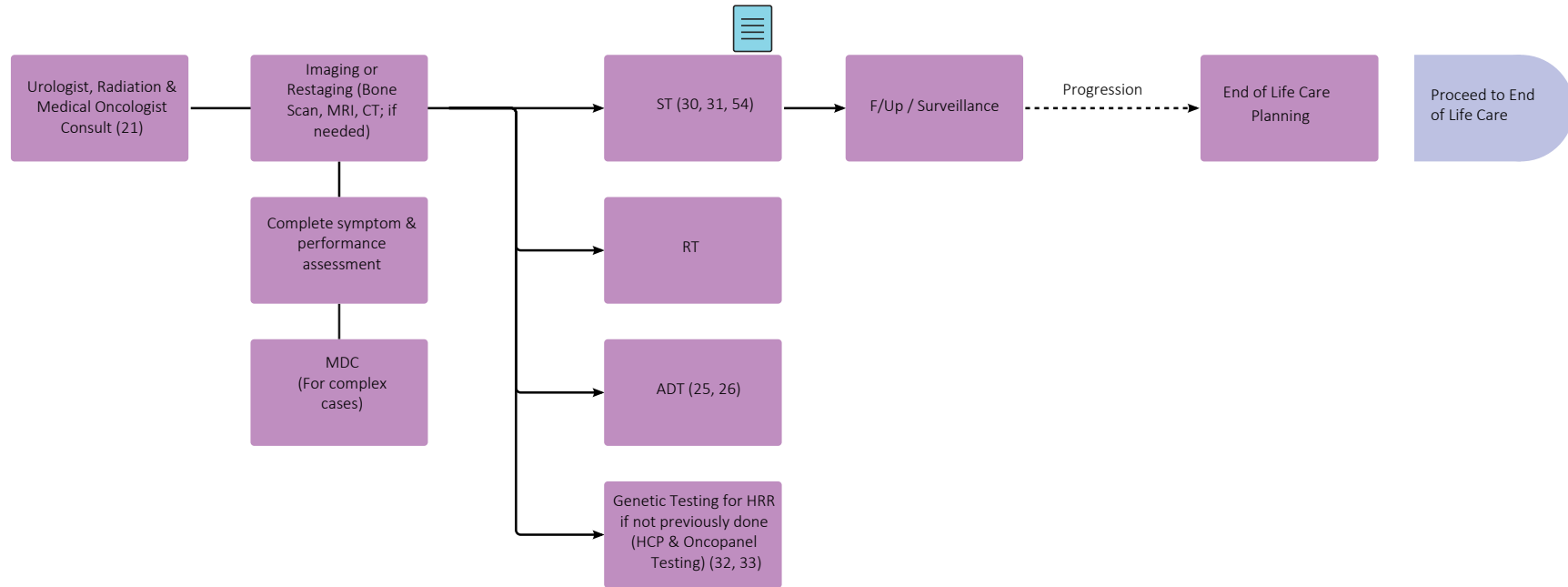
## Treatment (Metastatic - Castrate Sensitive)



Throughout treatment, consider...

Regular symptom & performance assessment (8, 9, 10) ; Supportive care (11, 12, 13) Sexual health (14, 15, 16); Co-morbidity management & medication review; Risk factor mitigation; Clinical trials (17, 18) (where applicable); Goals of care (19) ; Cultural needs (20)

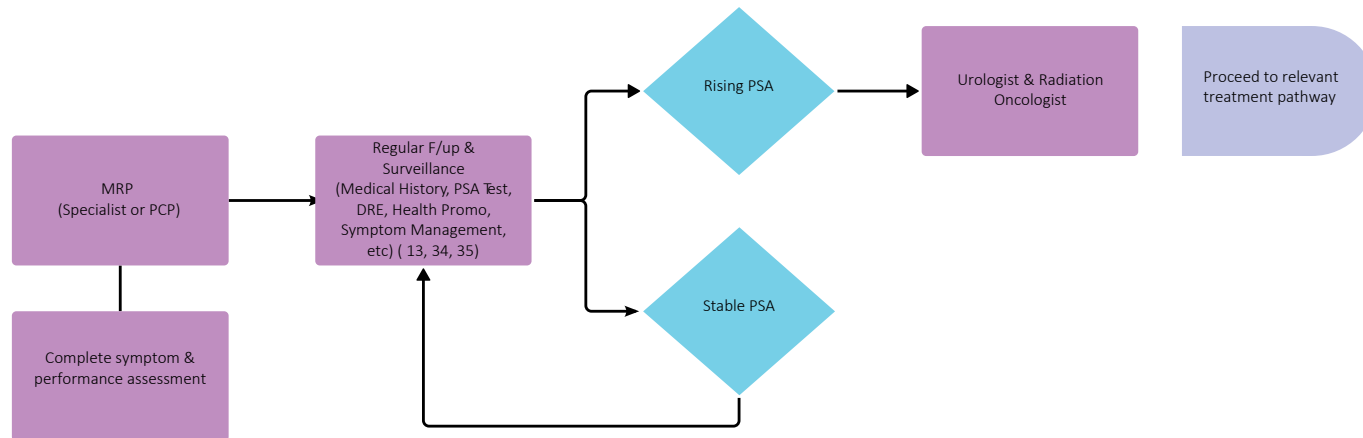
## Treatment (Metastatic - Castrate Resistant)



Throughout treatment, consider...

Regular symptom & performance assessment (8, 9, 10) ; Supportive care (11, 12, 13) Sexual health (14, 15, 16); Co-morbidity management & medication review; Risk factor mitigation; Clinical trials (17, 18) (where applicable); Goals of care (19) ; Cultural needs (20)

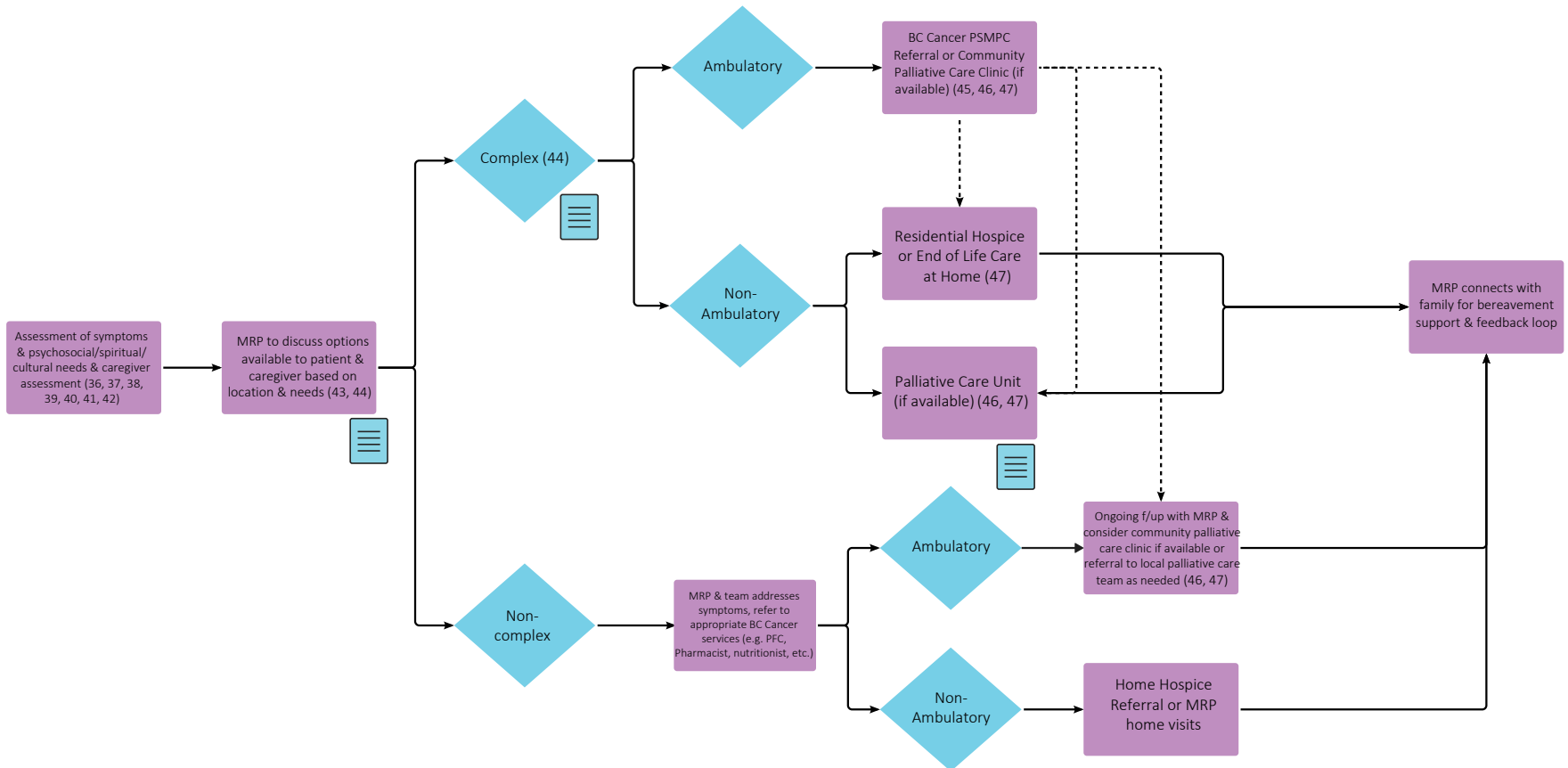
## Post-Treatment & Survivorship Recurrent or Progressive Disease



Throughout treatment, consider...

Regular symptom & performance assessment (8, 9, 10) ; Supportive care (11, 12, 13) Sexual health (14, 15, 16); Co-morbidity management & medication review; Risk factor mitigation; Clinical trials (17, 18) (where applicable); Goals of care (19) ; Cultural needs (20)

## End of Life Care



Consideration of Care Discussion & Consideration of Cultural Needs (43, 44, 48, 49, 50, 51, 52)

## Subject Matter Expert Working Group & COIs

### **Krista Noonan, Medical Oncologist**

Astellas, AstraZeneca, Bayer, BMS, Janssen, Tersera, Tolmar

### **Peter Black, Urologist**

AbbVie, AstraZeneca, Astellas, Bayer, BMS, CG Oncology, Combat, EMD-Serono, Ferring, Genentech, Janssen, Merck, Nonagen, Nanobot, NanOlogy, Pacific Edge, Pfizer, Photocure, Prokarium, Sumitomo, TerSera, Therelase, Tolmar, Verity, Veracyte

### **Daygen Finch, Medical Oncologist**

### **Clement Ho, Radiation Oncologist**

AbbVie, Bayer, Merck, TerSera, Tolmar

### **Nikita Ivanov, Nurse Practitioner**

### **Jenny Ko, Medical Oncologist**

Bayer, BMS, Merck, Pfizer, Bayer, Seagen, Takeda, Astellas, Janssen, AZ, Novartis, Jansen, Astellas

### **Michael McKenzie, Radiation Oncologist**

Janssen R&D

### **Michael Metcalfe, Urologist**

No disclosures

### **Stacy Miller, Radiation Oncologist**

No disclosures

### **Sunil Parimi, Medical Oncologist**

Astellas, Janssen, Merck, AstraZeneca, Bayer

### **Maryam Soleimani, Medical Oncologist**

Pfizer, Bayer, Novartis, Ipsen

### **Joanna Vergidis, Medical Oncologist**

### **Gang Wang, Pathologist**

No disclosures

### **Jack Zheng, Radiation Oncologist**

## Pathway Program Team

**Tammy Currie**, Executive Director, Provincial Programs

**Amilya Ladak**, Policy Analyst, Tumour Groups

**Shaifa Nanji**, Manager, Tumour Groups

**Sonia Panesar**, Project Coordinator, Tumour Groups

**Christine Simmons**, Tumour Group Council Chair

**Elaine Wai**, Senior Executive Director, Medical Affairs and Quality

**Sarah Weller**, Director, Provincial Programs

## Other Stakeholders

Family Practice & GPO

Indigenous Cancer Control

Nursing Community of Practice (NCoP)

Patient and Family Experience team

Provincial Pharmacy

Radiation Therapists

Surgical Oncology Network

## Appendix

- 1 <http://www.bccancer.bc.ca/health-professionals/professional-resources/clinical-care-pathways>
- 2 <https://www.cua.org/sites/default/files/Flipbooks/CPD/PSApocketguideSept22/index.html>
- 3 [https://canadiantaskforce.ca/wp-content/uploads/2016/12/CTFPHC\\_Prostate-Cancer\\_HarmsBenefits\\_FINAL.pdf](https://canadiantaskforce.ca/wp-content/uploads/2016/12/CTFPHC_Prostate-Cancer_HarmsBenefits_FINAL.pdf)
- 4 [https://www.mskcc.org/nomograms/prostate/biopsy\\_risk\\_dynamic](https://www.mskcc.org/nomograms/prostate/biopsy_risk_dynamic)
- 5 [https://www.cua.org/system/files/Guideline-Files/7851\\_v6\\_1.pdf](https://www.cua.org/system/files/Guideline-Files/7851_v6_1.pdf)
- 6 [https://www.cua.org/system/files/Guideline-Files/7268\\_v3.pdf](https://www.cua.org/system/files/Guideline-Files/7268_v3.pdf)
- 7 [https://www.thelancet.com/journals/lancet/article/PIIS0140-6736\(20\)30314-7/fulltext](https://www.thelancet.com/journals/lancet/article/PIIS0140-6736(20)30314-7/fulltext)
- 8 <https://www.healthlinkbc.ca/health-topics/international-prostate-symptom-score-ipss>
- 9 <https://globalrph.com/medcalcs/sexual-health-inventory-for-men-shim-score/>
- 10 <https://www.uptodate.com/contents/image?imageKey=HEME%2F72901>
- 11 <http://www.bccancer.bc.ca/our-services/services/supportive-care>
- 12 <http://www.bccancer.bc.ca/our-services/services/support-programs>
- 13 <https://pcscprogram.ca/>
- 14 <https://www.olivefertility.com/referring-physicians>
- 15 <https://www.pacificfertility.ca/physician-resources>
- 16 <http://www.bccancer.bc.ca/health-info/coping-with-cancer/managing-symptoms-side-effects/sexual-health>
- 17 <https://www.bccrc.ca/dept/cid/clinical-trials>
- 18 <https://www.prostatecentre.com/patient-information/clinical-trials/prostate-trials-open-enrollment>
- 19 <http://www.bccancer.bc.ca/new-patients-site/Documents/ACP-goals-of-care-orders.pdf>
- 20 <http://www.phsa.ca/aboriginal-health-site/Documents/IPN%20Fillable%20Referral%20Form.pdf>
- 21 <http://www.bccancer.bc.ca/health-professionals-site/Documents/Patient-Referral-Form.pdf>
- 22 <https://www.ncbi.nlm.nih.gov/pmc/articles/PMC3328553/>
- 23 <https://www.sciencedirect.com/science/article/abs/pii/S0302283823029433?via%3Dihub>
- 24 <https://ro-journal.biomedcentral.com/articles/10.1186/s13014-020-01608-1>
- 25 [https://www.cua.org/system/files/Guideline-Files/8054\\_v4.pdf](https://www.cua.org/system/files/Guideline-Files/8054_v4.pdf)
- 26 <https://www.cua.org/system/files/Guideline-Files/7660.pdf>
- 27 <https://www.ncbi.nlm.nih.gov/pmc/articles/PMC3243932/>
- 28 <https://pubmed.ncbi.nlm.nih.gov/17958697/>
- 29 <http://www.bccancer.bc.ca/health-professionals/clinical-resources/chemotherapy-protocols/genitourinary#Prostate>
- 30 <http://www.bccancer.bc.ca/systemic-therapy-site/Documents/Policy%20and%20Forms/Patient%20assistance%20programs.pdf>
- 31 <https://www.cua.org/system/files/Guideline-Files/8161.pdf>
- 32 [http://cancergeneticslab.ca/wp-content/uploads/2023/02/CACG\\_CGL\\_3017-CGL-Hereditary-Cancer-Multi-Gene-Panel-Requisition-v.2.pdf](http://cancergeneticslab.ca/wp-content/uploads/2023/02/CACG_CGL_3017-CGL-Hereditary-Cancer-Multi-Gene-Panel-Requisition-v.2.pdf)
- 33 [http://www.bccancer.bc.ca/lab-services-site/Documents/CACG\\_CGL\\_3015%20CGL%20Solid%20Tissue%20Molecular%20-%20May%202021.pdf](http://www.bccancer.bc.ca/lab-services-site/Documents/CACG_CGL_3015%20CGL%20Solid%20Tissue%20Molecular%20-%20May%202021.pdf)
- 34 <https://www2.gov.bc.ca/gov/content/health/practitioner-professional-resources/bc-guidelines/prostate-cancer-part-2>

## Appendix

- 35 <https://www.cua.org/system/files/Guideline-Files/5653.pdf>
- 36 <http://www.bccancer.bc.ca/books/Documents/Clinical%20Care%20Pathways/Revised%20PSMPC%20Questionnaire%20Pink%20Form%202020-21.pdf>
- 37 <http://www.bccancer.bc.ca/our-services/centres-clinics/bc-cancer-vancouver/epicc>
- 38 [https://www2.gov.bc.ca/assets/gov/health/practitioner-pro/bc-guidelines/palliative1\\_appendix\\_a.pdf](https://www2.gov.bc.ca/assets/gov/health/practitioner-pro/bc-guidelines/palliative1_appendix_a.pdf)
- 39 <https://bc-cpc.ca/wp-content/uploads/2018/09/SMGs-interactive-final-Nov-30-compressed.pdf>
- 40 <https://www2.gov.bc.ca/gov/content/health/practitioner-professional-resources/bc-guidelines/palliative-care>
- 41 <https://www2.gov.bc.ca/gov/content/health/practitioner-professional-resources/pharmacare/prescribers/plan-p-bc-palliative-care-benefits-program>
- 42 <http://www.bccancer.bc.ca/our-services/services/indigenous-cancer-control>
- 43 <http://www.bccancer.bc.ca/new-patients-site/Documents/SeriousIllnessConversationGuideCard.pdf>
- 44 <http://www.phsa.ca/health-info/medical-assistance-in-dying>
- 45 <http://www.bccancer.bc.ca/managing-symptoms-site/Documents/PSMPC-Referral-Form-for-All-BC-Cancer-Centres.pdf>
- 46 <http://www.bccancer.bc.ca/our-services/services/supportive-care/pain-symptom-management#What--we--do>
- 47 [https://vancouver.pathwaysbc.ca/service\\_categories/24](https://vancouver.pathwaysbc.ca/service_categories/24)
- 48 <http://www.bccancer.bc.ca/new-patients-site/Documents/Goals%20of%20Care%20Orders%20Form%20June%202018%20Final.pdf>
- 49 <https://www2.gov.bc.ca/assets/gov/people/seniors/health-safety/pdf/myvoice-advancecareplanningguide.pdf>
- 50 <https://www2.gov.bc.ca/gov/content/family-social-supports/seniors/health-safety/advance-care-planning>
- 51 <http://www.bccancer.bc.ca/managing-symptoms-site/Documents/When-Life-Nearing-its-End.pdf>
- 52 <http://www.bccancer.bc.ca/new-patients-site/Documents/ACP-tips-for-oncology-professionals.pdf>
- 53 <https://cap.phsa.ca/>
- 54 <http://www.bccancer.bc.ca/health-professionals/clinical-resources/smoking-cessation-program>
- 55 <http://www.bccancer.bc.ca/prevent/alcohol/reduce-your-risk>
- 56 [https://www.cua.org/system/files/Guideline-Files/8148\\_v7.pdf](https://www.cua.org/system/files/Guideline-Files/8148_v7.pdf)