

Primary Care Practitioners
(Family Practice)

Indigenous Cancer Care

Supportive Care
(Counselling, Psychiatry, Nutrition, Speech Language Pathology, Physiotherapy, Pain & Symptom Management/Palliative Care)

This figure represents a general pathway of care that most people with cancer will experience. It shows

- The major phases of a cancer journey
- How a person might progress through each phase
- Key supportive services that are available throughout each person's cancer journey

Please visit the [Clinical Pathways](#) Web page for

- Tumour Group Clinical Pathways
- Patient Companion Guide
- Methodology Reports

Target Population

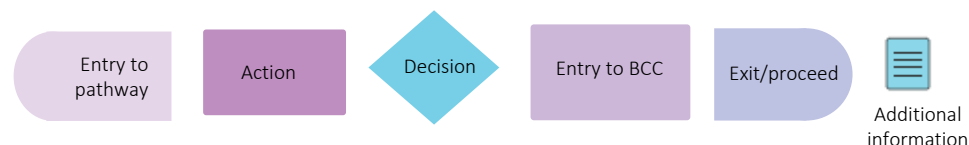
The target population for this pathway include health care providers such as primary care practitioners, oncologists, specialists, nurses, and other members of a health care team including allied health providers. Healthcare administrators across BC Cancer and the health authorities may also benefit from this resource for systems and operational planning.

Pathway Disclaimer

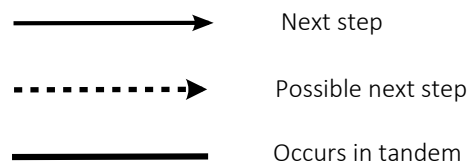
This pathway is an informational resource, intended to provide a high-level overview of the treatment journey a patient in British Columbia may receive. This pathway is not a substitute for medical advice and clinical judgment is still required as not all care trajectories will follow the proposed steps outlined in the pathway. This resource may not reflect all available evidence as research continues to evolve rapidly and BC Cancer is not responsible for any incomplete information. Furthermore, BC Cancer and those involved in developing this pathway are not liable for any incidental or consequential outcomes related to the information in this pathway. Anyone using the information provided in this pathway does so at their own risk.

Pathway Map Legend

Shape Guide



Line Guide



Pathway Map Considerations

This pathway is intended as a high-level resource and therefore does not include specific recommendations on specific systemic therapy protocols or radiation therapy doses. Instead, additional information can be sought via the inserted hyperlinks to resources that may aid a clinician in their treatment planning. The level of detail for each pathway was guided by the tumor group lead and intentionally kept high-level and represents the overall ideal pathway of care for a patient in general. Each patient will have individual needs and each cancer centre may have variation in the way care is delivered, but overall the intent was to represent the pathway that the majority of patients will follow.

General Resources

Indigenous Patient Navigator Referral Form¹⁹ : <http://www.phsa.ca/aboriginal-health-site/Documents/IPN%20Fillable%20Referral%20Form.pdf>

Supportive Care¹⁰: <http://www.bccancer.bc.ca/our-services/services/supportive-care>

Compassionate Access Program (CAP)⁵⁴: <https://cap.phsa.ca/>

GU Chemotherapy Protocols²⁹ : <http://www.bccancer.bc.ca/health-professionals/clinical-resources/chemotherapy-protocols/genitourinary#Prostate>

Manufacturer Patient Assistance Programs³⁰ : <http://www.bccancer.bc.ca/systemic-therapy-site/Documents/Policy%20and%20Forms/Patient%20assistance%20programs.pdf>

BC Cancer Research Clinical Trials¹⁶: <https://www.bccrc.ca/dept/cid/clinical-trials>

MDC Referral Form²¹: <http://www.bccancer.bc.ca/books/Documents/Clinical%20Care%20Pathways/Patient%20Conference%20Order.pdf>

Smoking Cessation Program⁵⁵ : <http://www.bccancer.bc.ca/health-professionals/clinical-resources/smoking-cessation-program>

Alcohol Reduction⁵⁶ : <http://www.bccancer.bc.ca/prevent/alcohol/reduce-your-risk>

Pharmacy Contact Info⁵⁷ : <http://www.bccancer.bc.ca/health-professionals/clinical-resources/pharmacy#Contact--info>

Abbreviations

ADT: Androgen deprivation therapy

ARPI: Androgen receptor pathway inhibition

PSA: Prostate specific antigen

PCP: Primary care provider

DRE: Digital rectal examination

EBRT: External beam radiation therapy

MDC: Multidisciplinary conference/discussion

SBRT: Stereotactic body radiation therapy

ST: Systemic therapy

RT: Radiation therapy

HRR: Homologous recombination repair

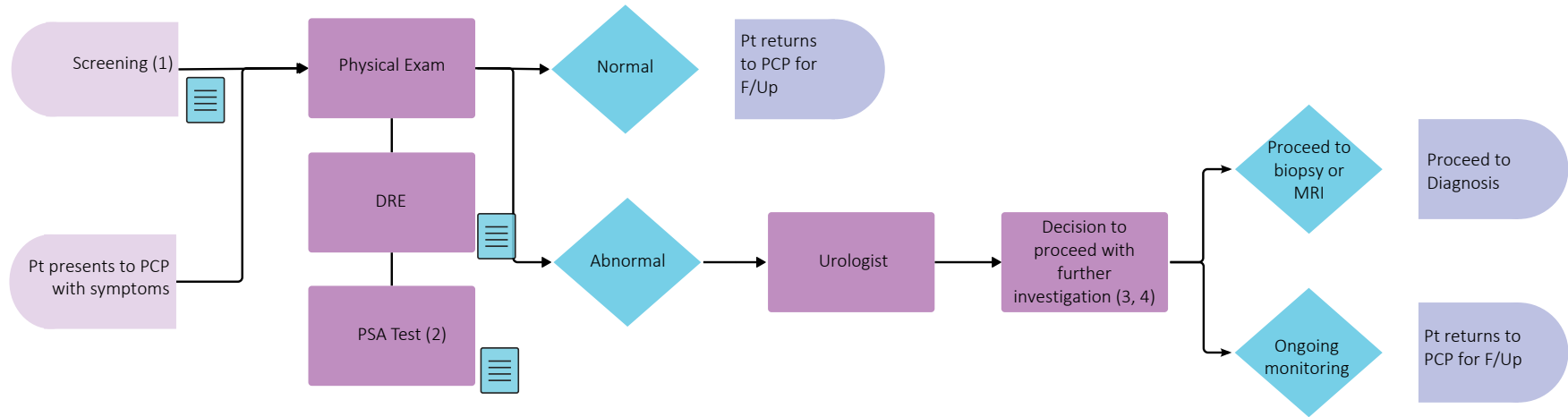
MRP: Most responsible provider

Additional Information

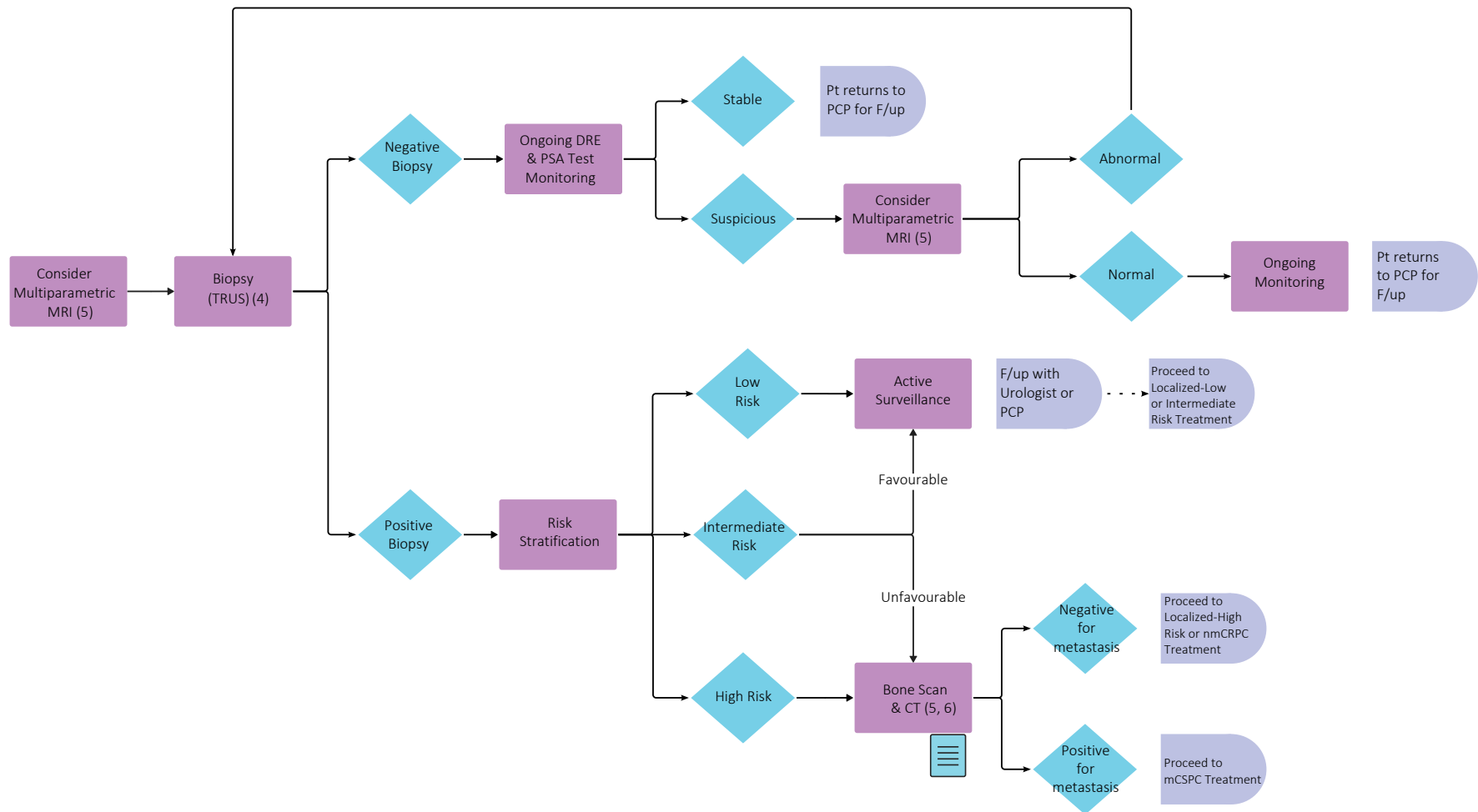
To learn more about how the Clinical Care Pathways are developed, visit the [Methodology Report](#).

Other Tumour Group Clinical Care Pathways can be found on the [BC Cancer Website](#).

Pre-Diagnosis



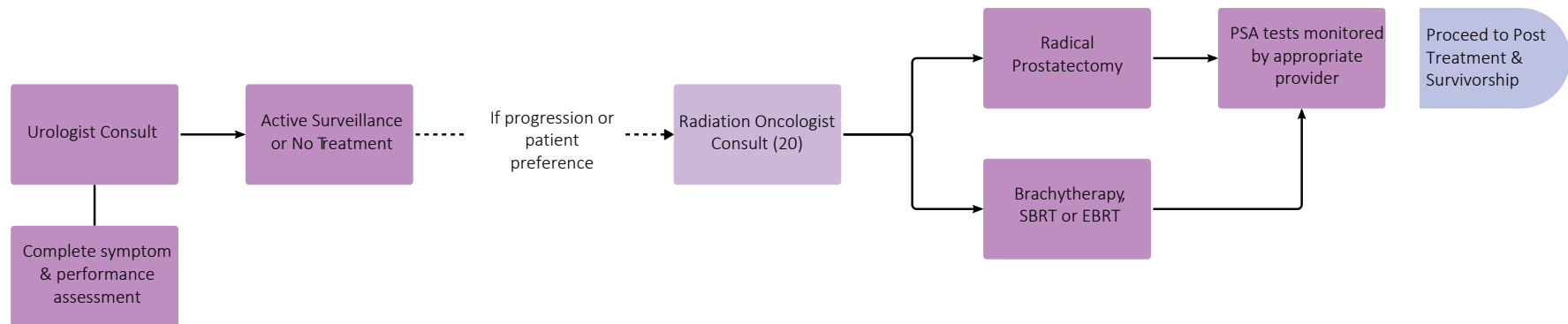
Diagnosis



Throughout treatment, consider...

Regular symptom & performance status assessment (7, 8, 9); Supportive care (10, 11, 12); Sexual & reproductive health (13, 14, 15); Co-morbidity management & medication review; Risk factor mitigation; Clinical trials (16, 17) (where applicable); Goals of care (18); Cultural safety (19); Involvement of PCP

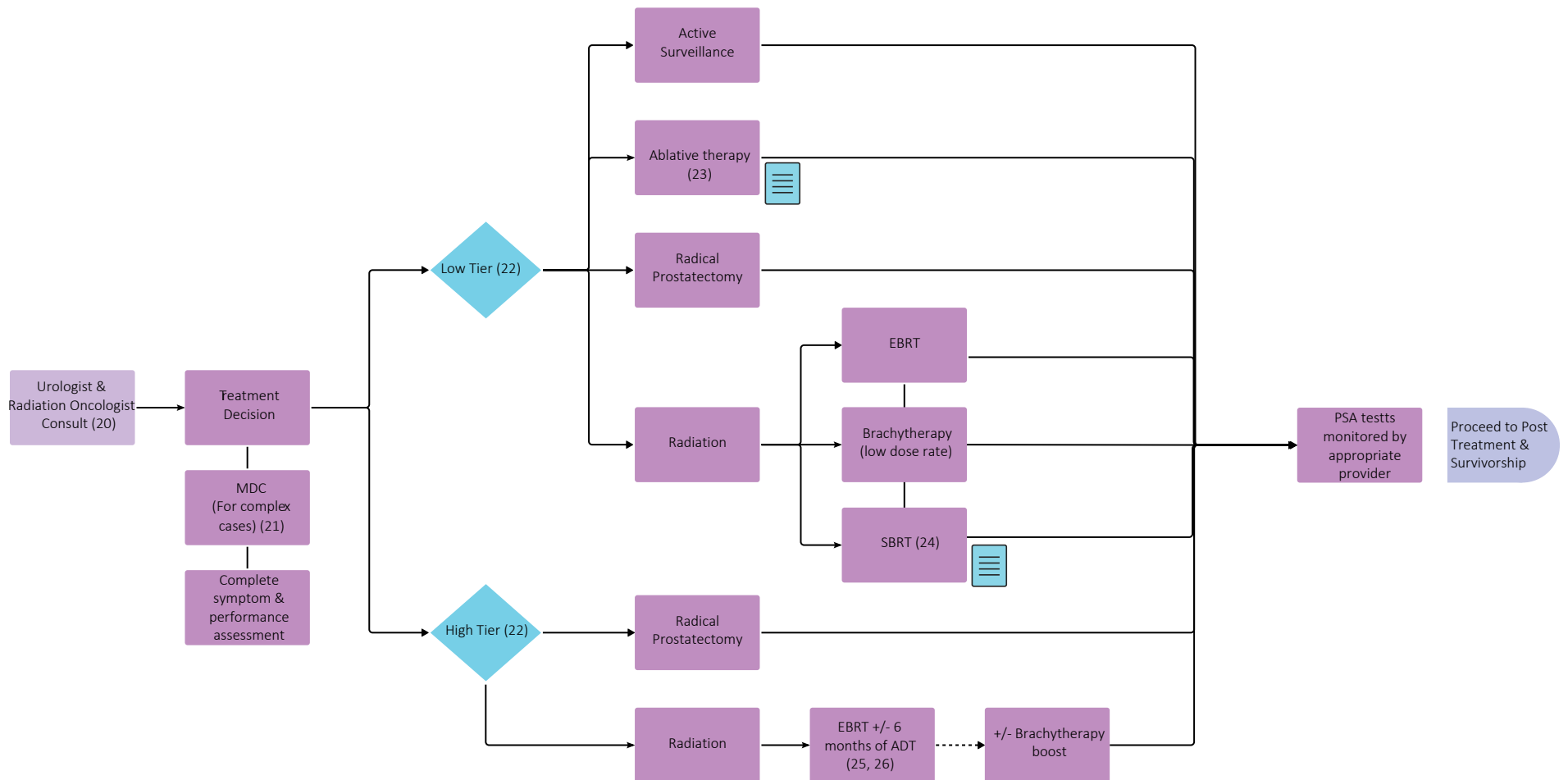
Treatment (Localized - Low Risk)



Throughout treatment, consider...

Regular symptom & performance status assessment (7, 8, 9); Supportive care (10, 11, 12); Sexual & reproductive health (13, 14, 15); Co-morbidity management & medication review; Risk factor mitigation; Clinical trials (16, 17) (where applicable); Goals of care (18); Cultural safety (19); Involvement of PCP

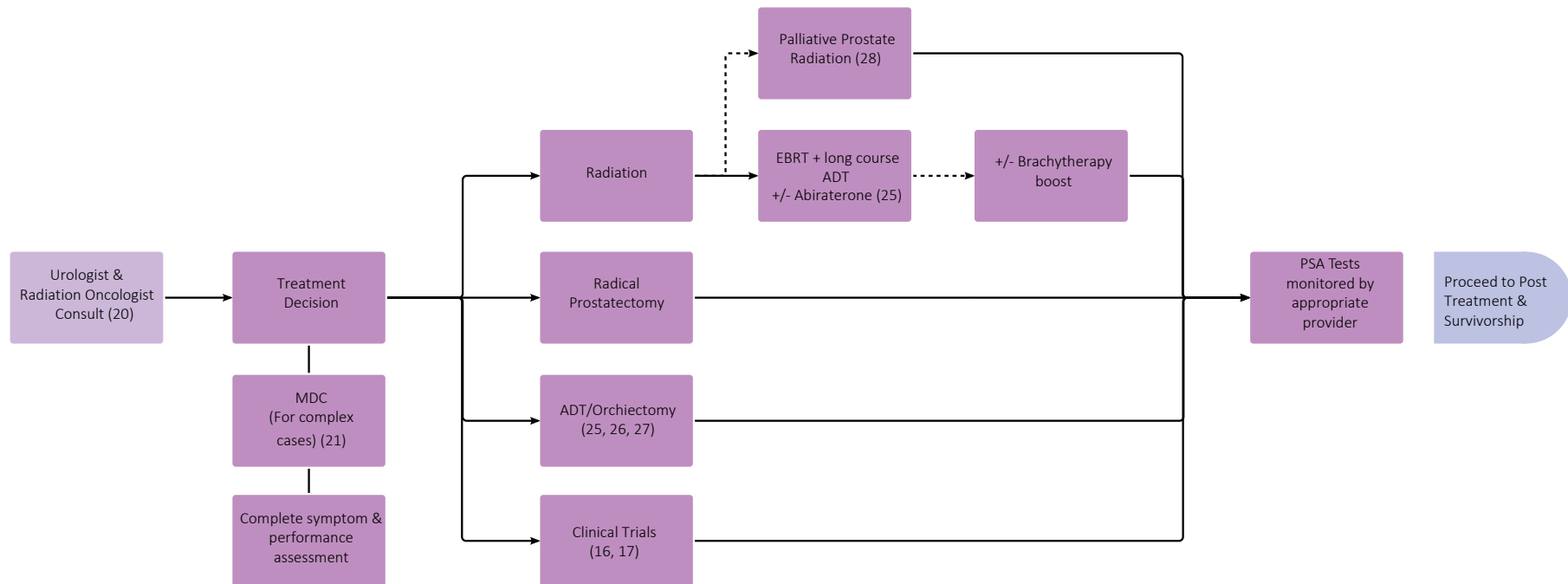
Treatment (Localized - Intermediate Risk)



Throughout treatment, consider...

Regular symptom & performance status assessment (7, 8, 9); Supportive care (10, 11, 12); Sexual & reproductive health (13, 14, 15); Co-morbidity management & medication review; Risk factor mitigation; Clinical trials (16, 17) (where applicable); Goals of care (18); Cultural safety (19); Involvement of PCP

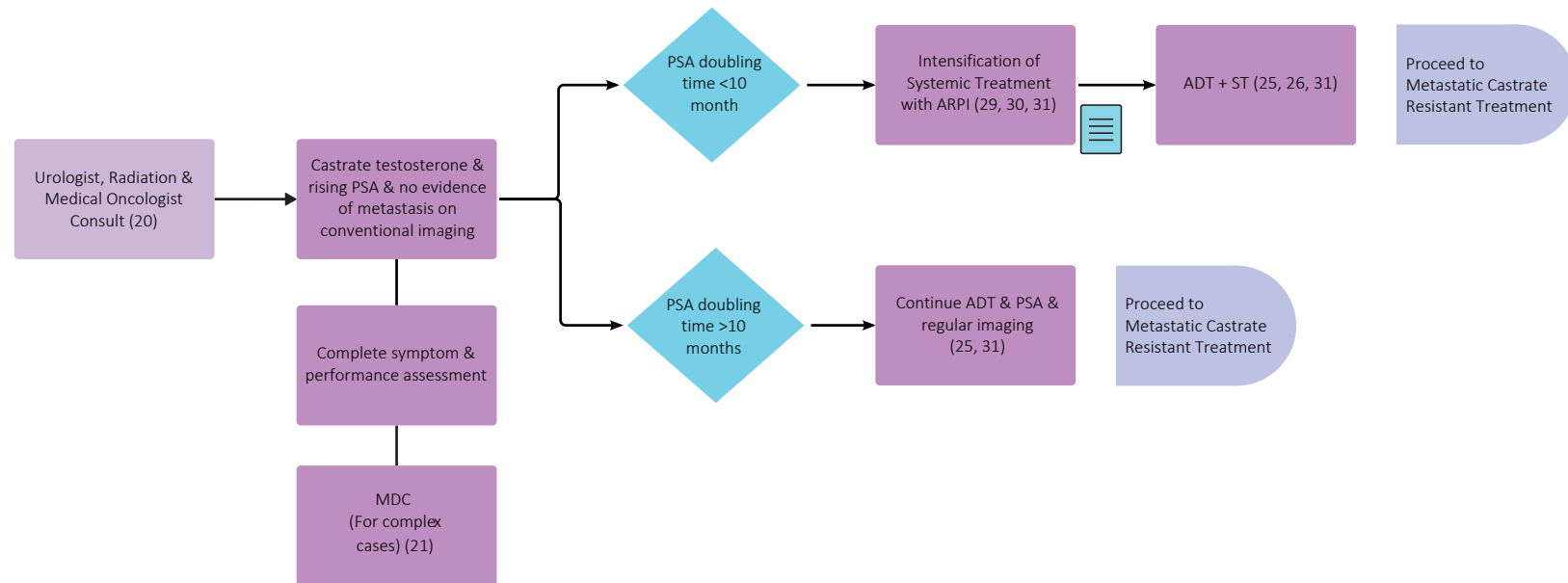
Treatment (Localized - High Risk)



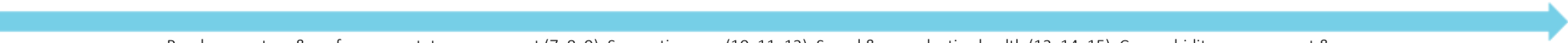
Throughout treatment, consider...

Regular symptom & performance status assessment (7, 8, 9); Supportive care (10, 11, 12); Sexual & reproductive health (13, 14, 15); Co-morbidity management & medication review; Risk factor mitigation; Clinical trials (16, 17) (where applicable); Goals of care (18); Cultural safety (19); Involvement of PCP

Treatment (Non Metastatic - Castrate Resistant)

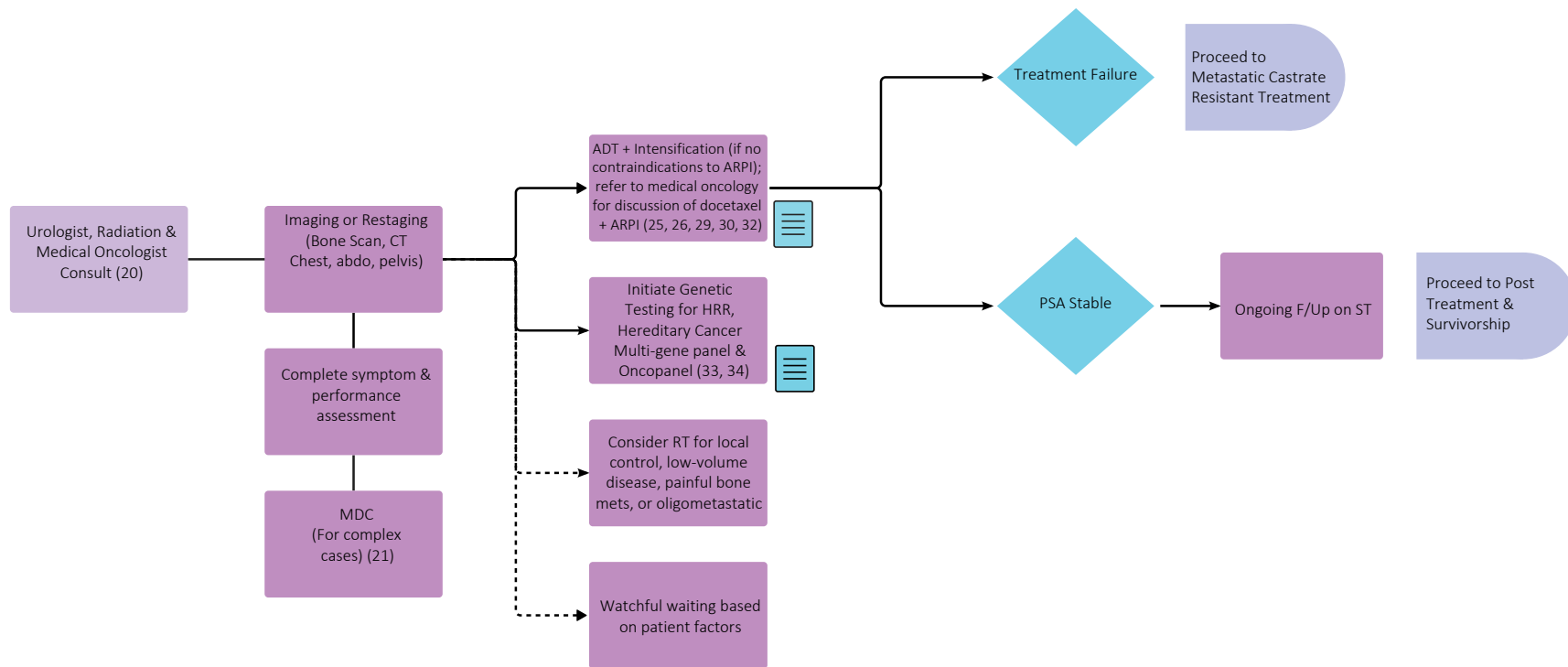


Throughout treatment, consider...

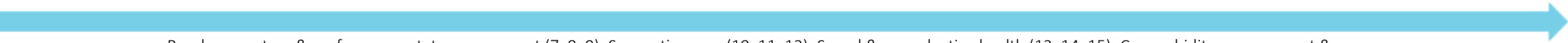


Regular symptom & performance status assessment (7, 8, 9); Supportive care (10, 11, 12); Sexual & reproductive health (13, 14, 15); Co-morbidity management & medication review; Risk factor mitigation; Clinical trials (16, 17) (where applicable); Goals of care (18); Cultural safety (19); Involvement of PCP

Treatment (Metastatic - Castrate Sensitive)

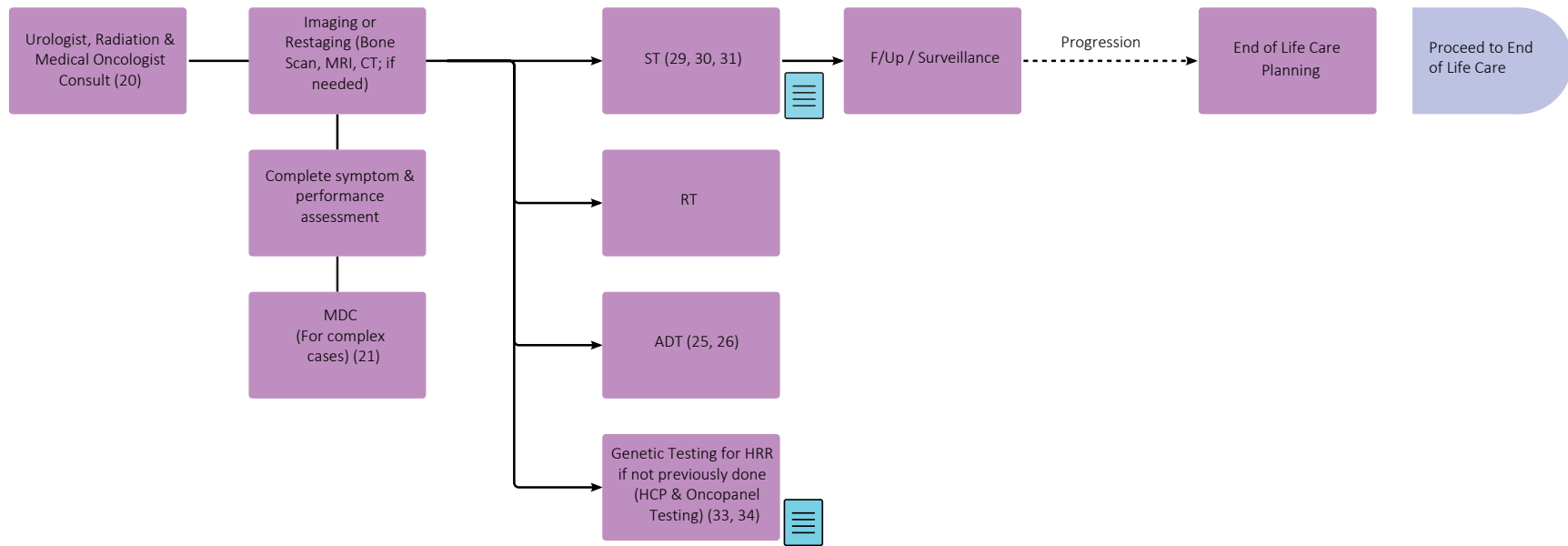


Throughout treatment, consider...



Regular symptom & performance status assessment (7, 8, 9); Supportive care (10, 11, 12); Sexual & reproductive health (13, 14, 15); Co-morbidity management & medication review; Risk factor mitigation; Clinical trials (16, 17) (where applicable); Goals of care (18); Cultural safety (19); Involvement of PCP

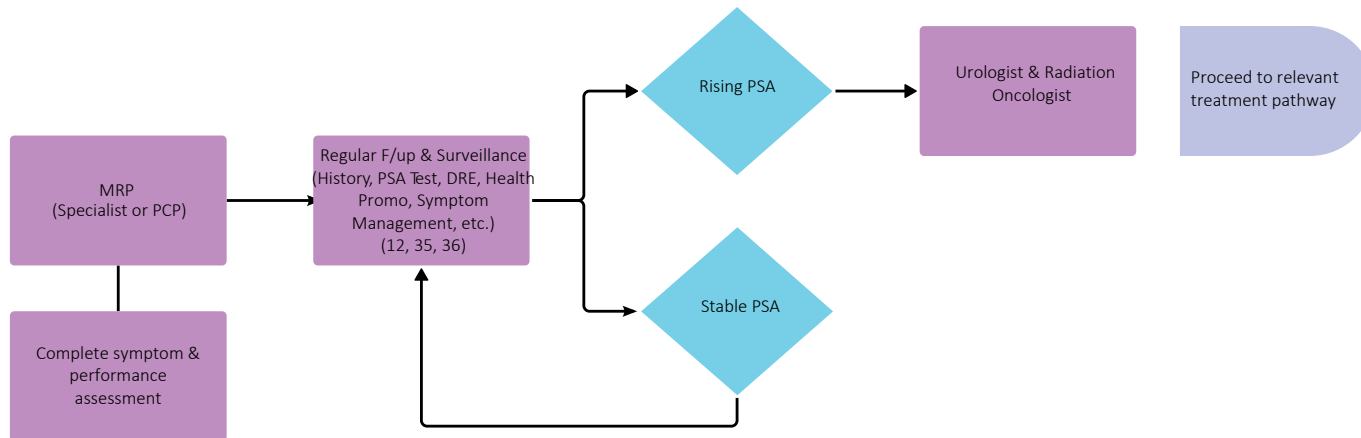
Treatment (Metastatic - Castrate Resistant)



Throughout treatment, consider...

Regular symptom & performance status assessment (7, 8, 9); Supportive care (10, 11, 12); Sexual & reproductive health (13, 14, 15); Co-morbidity management & medication review; Risk factor mitigation; Clinical trials (16, 17) (where applicable); Goals of care (18); Cultural safety (19); Involvement of PCP

Post-Treatment & Survivorship Recurrent or Progressive Disease

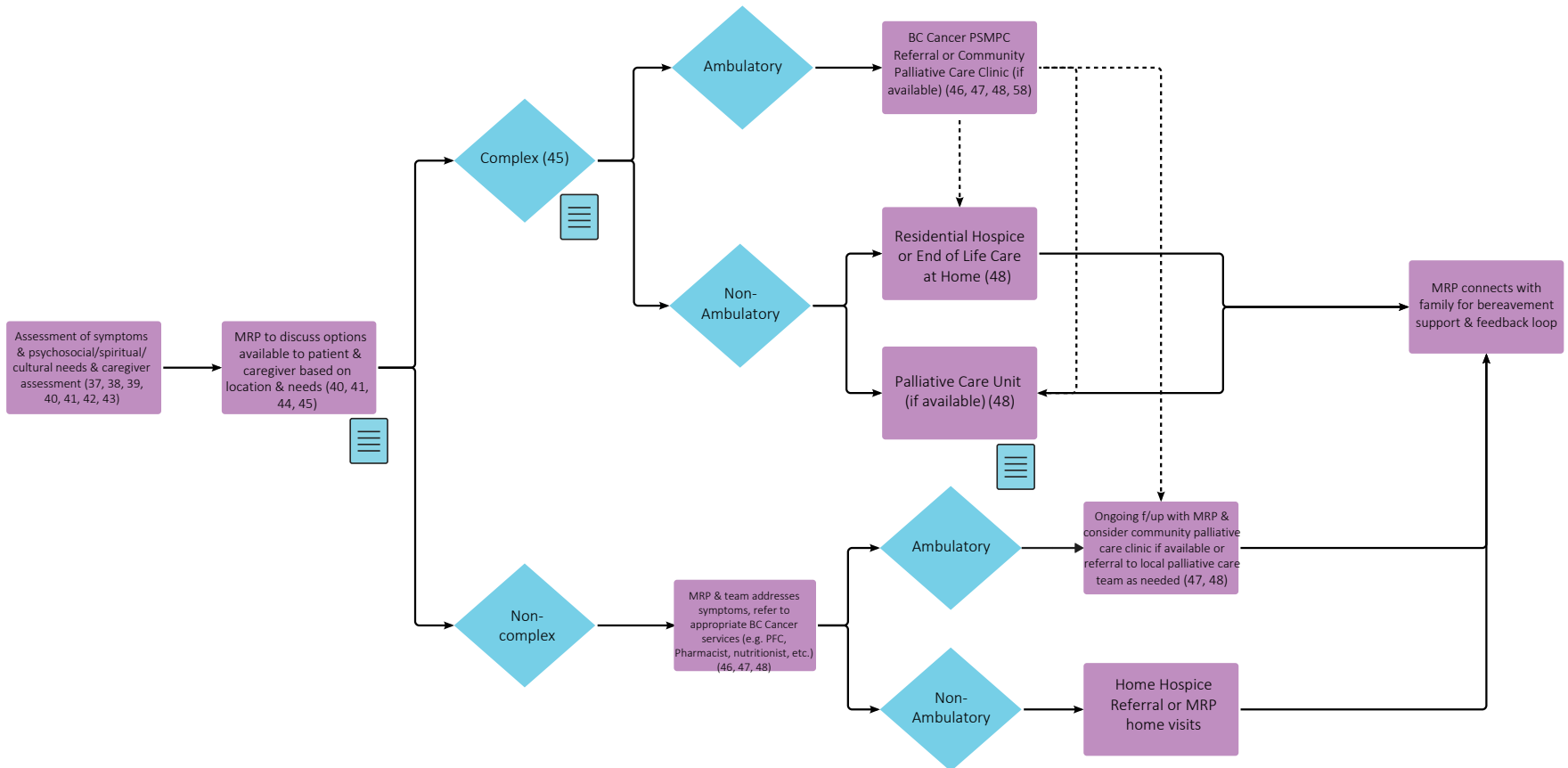


Throughout treatment, consider...



Regular symptom & performance status assessment (7, 8, 9); Supportive care (10, 11, 12); Sexual & reproductive health (13, 14, 15); Co-morbidity management & medication review; Risk factor mitigation; Clinical trials (16, 17) (where applicable); Goals of care (18); Cultural safety (19); Involvement of PCP

End of Life Care



Goals of Care Discussion & Consideration of Cultural Safety (19, 44, 45, 49, 50, 51, 52, 53)

Subject Matter Expert Working Group & COIs

Krista Noonan, Medical Oncologist

Astellas, AstraZeneca, Bayer, BMS, Janssen, Tersera, Tolmar

Peter Black, Urologist

AbbVie, AstraZeneca, Astellas, Bayer, BMS, CG Oncology, Combat, EMD-Serono, Ferring, Genentech, Janssen, Merck, Nonagen, Nanobot, NanOlogy, Pacific Edge, Pfizer, Photocure, Prokarium, Sumitomo, TerSera, Therelase, Tolmar, Verity, Veracyte

Clement Ho, Radiation Oncologist

Abbvie, Bayer, Merck, TerSera, Tolmar

Jenny Ko, Medical Oncologist

Bayer, BMS, Merck, Pfizer, Bayer, Seagen, Takeda, Astellas, Janssen, AZ, Novartis, Jansen, Astellas

Michael McKenzie, Radiation Oncologist

Janssen R&D

Michael Metcalfe, Urologist

No disclosures

Stacy Miller, Radiation Oncologist

No disclosures

Sunil Parimi, Medical Oncologist

Astellas, Janssen, Merck, AstraZeneca, Bayer

Maryam Soleimani, Medical Oncologist

Pfizer, Bayer, Novartis, Ipsen

Gang Wang, Pathologist

No disclosures

Jack Zheng, Radiation Oncologist

Bayer, TerSera, Tolmar

Joanna Vergidis, Medical Oncologist**Nikita Ivanov, Nurse Practitioner****Daygen Finch, Medical Oncologist**

Pfizer, Eisai, Seagen, Janssen, Bayer, Abbvie, Roche

Pathway Program Team

Tammy Currie, Executive Director, Provincial Programs

Amilya Ladak, Policy Analyst, Tumour Groups

Shaifa Nanji, Manager, Tumour Groups

Sonia Panesar, Project Coordinator, Tumour Groups

Christine Simmons, Tumour Group Council Chair

Elaine Wai, Senior Executive Director, Medical Affairs and Quality

Sarah Weller, Director, Provincial Programs

Other Stakeholders

Family Practice & GPO

Indigenous Cancer Control

Nursing Community of Practice (NCoP)

Patient and Family Experience team

Provincial Pharmacy

Radiation Therapists

Surgical Oncology Network

Appendix

1. <https://www.cua.org/sites/default/files/Flipbooks/CPD/PSApocketguideSept22/index.html>
2. https://canadiantaskforce.ca/wp-content/uploads/2016/12/CTFPHC_Prostate-Cancer_HarmsBenefits_FINAL.pdf
3. https://www.mskcc.org/nomograms/prostate/biopsy_risk_dynamic
4. https://www.cua.org/system/files/Guideline-Files/7851_v6_1.pdf
5. https://www.cua.org/system/files/Guideline-Files/7268_v3.pdf
6. [https://www.thelancet.com/journals/lancet/article/PIIS0140-6736\(20\)30314-7/fulltext](https://www.thelancet.com/journals/lancet/article/PIIS0140-6736(20)30314-7/fulltext)
7. <https://www.healthlinkbc.ca/health-topics/international-prostate-symptom-score-ipss>
8. <https://globalrph.com/medcalcs/sexual-health-inventory-for-men-shim-score/>
9. <https://www.uptodate.com/contents/image?imageKey=HEME%2F72901>
10. <http://www.bccancer.bc.ca/our-services/services/supportive-care>
11. <http://www.bccancer.bc.ca/our-services/services/support-programs>
12. <https://pcscprogram.ca/>
13. <https://www.olivefertility.com/referring-physicians>
14. <https://www.pacificfertility.ca/physician-resources>
15. <http://www.bccancer.bc.ca/health-info/coping-with-cancer/managing-symptoms-side-effects/sexual-health>
16. <https://www.bccrc.ca/dept/cid/clinical-trials>
17. <https://www.prostatecentre.com/patient-information/clinical-trials/prostate-trials-open-enrollment>
18. <http://www.bccancer.bc.ca/new-patients-site/Documents/ACP-goals-of-care-orders.pdf>
19. <http://www.phsa.ca/aboriginal-health-site/Documents/IPN%20Fillable%20Referral%20Form.pdf>
20. <http://www.bccancer.bc.ca/health-professionals-site/Documents/Patient-Referral-Form.pdf>
21. <http://www.bccancer.bc.ca/books/Documents/Clinical%20Care%20Pathways/Patient%20Conference%20Order.pdf>
22. <https://www.ncbi.nlm.nih.gov/pmc/articles/PMC3328553/>
23. <https://www.sciencedirect.com/science/article/abs/pii/S0302283823029433?via%3Dihub>
24. <https://ro-journal.biomedcentral.com/articles/10.1186/s13014-020-01608-1>
25. https://www.cua.org/system/files/Guideline-Files/8054_v4.pdf
26. <https://www.cua.org/system/files/Guideline-Files/7660.pdf>
27. <https://www.ncbi.nlm.nih.gov/pmc/articles/PMC3243932/>
28. <https://pubmed.ncbi.nlm.nih.gov/17958697/>
29. <http://www.bccancer.bc.ca/health-professionals/clinical-resources/chemotherapy-protocols/genitourinary#Prostate>
30. <http://www.bccancer.bc.ca/systemic-therapy-site/Documents/Policy%20and%20Forms/Patient%20assistance%20programs.pdf>
31. <https://www.cua.org/system/files/Guideline-Files/8161.pdf>
32. https://www.cua.org/system/files/Guideline-Files/8148_v7.pdf
33. http://cancergeneticslab.ca/wp-content/uploads/2023/02/CACG_CGL_3017-CGL-Hereditary-Cancer-Multi-Gene-Panel-Requisition-v.2.pdf
34. http://www.bccancer.bc.ca/lab-services-site/Documents/CACG_CGL_3015%20CGL%20Solid%20Tissue%20Molecular%20-%20May%202021.pdf

Appendix

35. <https://www2.gov.bc.ca/gov/content/health/practitioner-professional-resources/bc-guidelines/prostate-cancer-part-2>
36. <https://www.cua.org/system/files/Guideline-Files/5653.pdf>
37. <http://www.bccancer.bc.ca/books/Documents/Clinical%20Care%20Pathways/Revised%20PSMPC%20Questionnaire%20Pink%20Form%202020-21.pdf>
38. <http://www.bccancer.bc.ca/our-services/centres-clinics/bc-cancer-vancouver/epicc>
39. https://www2.gov.bc.ca/assets/gov/health/practitioner-pro/bc-guidelines/palliative1_appendix_a.pdf
40. <https://www.bc-cpc.ca/publications/symptom-management-guidelines/>
41. <https://www2.gov.bc.ca/gov/content/health/practitioner-professional-resources/bc-guidelines/palliative-care>
42. <https://www2.gov.bc.ca/gov/content/health/practitioner-professional-resources/pharmacare/prescribers/plan-p-bc-palliative-care-benefits-program>
43. <http://www.bccancer.bc.ca/our-services/services/indigenous-cancer-control>
44. <http://www.bccancer.bc.ca/new-patients-site/Documents/SeriousIllnessConversationGuideCard.pdf>
45. <http://www.phsa.ca/health-info/medical-assistance-in-dying>
46. <http://www.bccancer.bc.ca/managing-symptoms-site/Documents/PSMPC-Referral-Form-for-All-BC-Cancer-Centres.pdf>
47. <http://www.bccancer.bc.ca/our-services/services/supportive-care/pain-symptom-management#What--we--do>
48. https://vancouver.pathwaysbc.ca/service_categories/24
49. <http://www.bccancer.bc.ca/new-patients-site/Documents/Goals%20of%20Care%20Orders%20Form%20June%202018%20Final.pdf>
50. <https://www2.gov.bc.ca/assets/gov/people/seniors/health-safety/pdf/myvoice-advancecareplanningguide.pdf>
51. <https://www2.gov.bc.ca/gov/content/family-social-supports/seniors/health-safety/advance-care-planning>
52. <http://www.bccancer.bc.ca/managing-symptoms-site/Documents/When-Life-Nearing-its-End.pdf>
53. <http://www.bccancer.bc.ca/new-patients-site/Documents/ACP-tips-for-oncology-professionals.pdf>
54. <https://cap.phsa.ca/>
55. <http://www.bccancer.bc.ca/health-professionals/clinical-resources/smoking-cessation-program>
56. <http://www.bccancer.bc.ca/prevent/alcohol/reduce-your-risk>
57. <http://www.bccancer.bc.ca/health-professionals/clinical-resources/pharmacy#Contact--info>
58. http://www.bccancer.bc.ca/new-patients-site/Documents/MIPPC_Referral_Form.pdf