

Primary Care Practitioners
(Family Practice)

Indigenous Cancer Care

Supportive Care
(Counselling, Psychiatry, Nutrition, Speech Language Pathology, Physiotherapy, Pain & Symptom Management/Palliative Care)

This figure represents a general pathway of care that most people with cancer will experience. It shows

- The major phases of a cancer journey
- How a person might progress through each phase
- Key supportive services that are available throughout each person's cancer journey

Please visit the [Clinical Care Pathways](#) Web page for

- Tumour Specific Group Clinical Pathways
- Patient Companion Guide
- Methodology Reports

Target Population

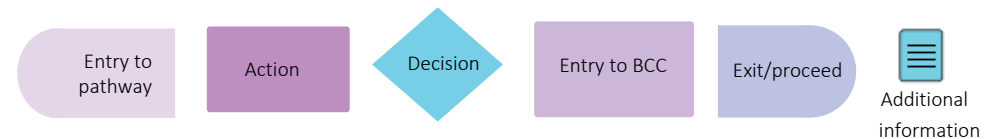
The target population for this pathway include health care providers such as primary care practitioners, oncologists, specialists, nurses, and other members of a health care team including allied health providers. Healthcare administrators across BC Cancer and the health authorities may also benefit from this resource for systems and operational planning.

Pathway Disclaimer

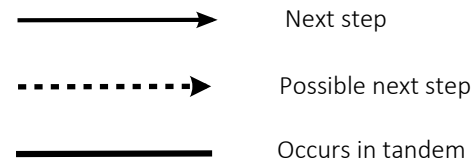
This pathway is an informational resource, intended to provide a high-level overview of the treatment journey a patient in British Columbia may receive. This pathway is not a substitute for medical advice and clinical judgment is still required as not all care trajectories will follow the proposed steps outlined in the pathway. This resource may not reflect all available evidence as research continues to evolve rapidly and BC Cancer is not responsible for any incomplete information. Furthermore, BC Cancer and those involved in developing this pathway are not liable for any incidental or consequential outcomes related to the information in this pathway. Anyone using the information provided in this pathway does so at their own risk.

Pathway Map Legend

Shape Guide



Line Guide



Pathway Map Considerations

This pathway is intended as a high-level resource and therefore does not include specific recommendations on specific systemic therapy protocols or radiation therapy doses. Instead, additional information can be sought via the inserted hyperlinks to resources that may aid a clinician in their treatment planning. The level of detail for each pathway was guided by the tumor group lead and intentionally kept high-level and represents the overall ideal pathway of care for a patient in general. Each patient will have individual needs and each cancer centre may have variation in the way care is delivered, but overall the intent was to represent the pathway that the majority of patients will follow.

General Resources

Indigenous Patient Navigator Referral Form (12): <http://www.phsa.ca/aboriginal-health-site/Documents/IPN%20Fillable%20Referral%20Form.pdf>

Supportive Care (5): <http://www.bccancer.bc.ca/our-services/services/supportive-care>

Compassionate Access Program (CAP) (34): <https://cap.phsa.ca/>

Head & Neck Chemotherapy Protocols (15): <http://www.bccancer.bc.ca/health-professionals/clinical-resources/chemotherapy-protocols/head-neck>

Manufacturer Patient Assistance Programs (16): <http://www.bccancer.bc.ca/systemic-therapy-site/Documents/Policy%20and%20Forms/Patient%20assistance%20programs.pdf>

BC Cancer Research Clinical Trials (10): <https://www.bccrc.ca/dept/cid/clinical-trials>

Smoking Cessation Program (2): <http://www.bccancer.bc.ca/health-professionals/clinical-resources/smoking-cessation-program>

Alcohol Reduction (35): <http://www.bccancer.bc.ca/prevent/alcohol/reduce-your-risk>

MDC Referral Form (14): <http://www.bccancer.bc.ca/books/Documents/Clinical%20Care%20Pathways/Patient%20Conference%20Order.pdf>

Pharmacy Contact Info (39): <http://www.bccancer.bc.ca/health-professionals/clinical-resources/pharmacy#Contact--info>

Abbreviations

GPO: General Practitioner in Oncology

HCP: Hereditary Cancer Program

MDC: Multidisciplinary Conference/Discussion

MRP: Most Responsible Provider

PCP: Primary Care Provider

PFC: Patient & Family Counseling

PSMPC: Pain & Symptom Management & Palliative Care

RT: Radiation Therapy

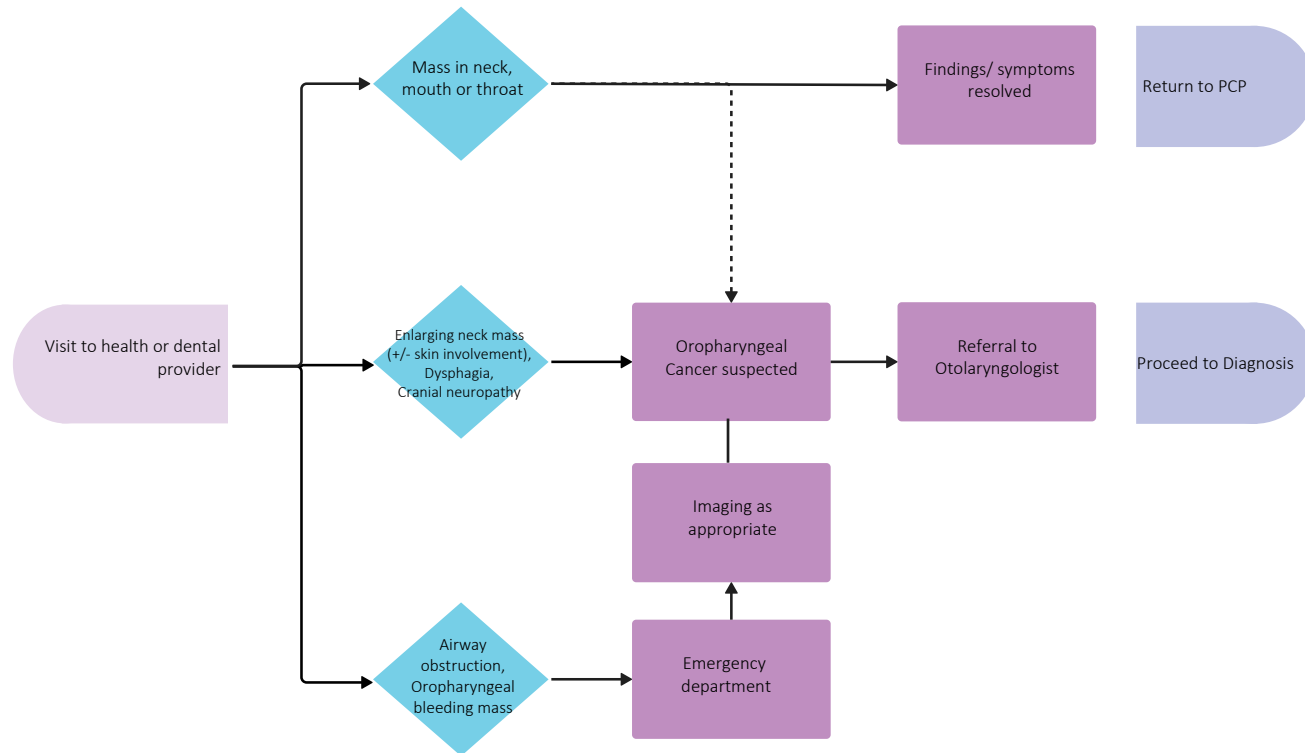
ST: Systemic Therapy

Additional Information

To learn more about how the Clinical Care Pathways are developed, visit the [Methodology Report](#).

Other Tumour Group Clinical Care Pathways can be found on the [BC Cancer Website](#).

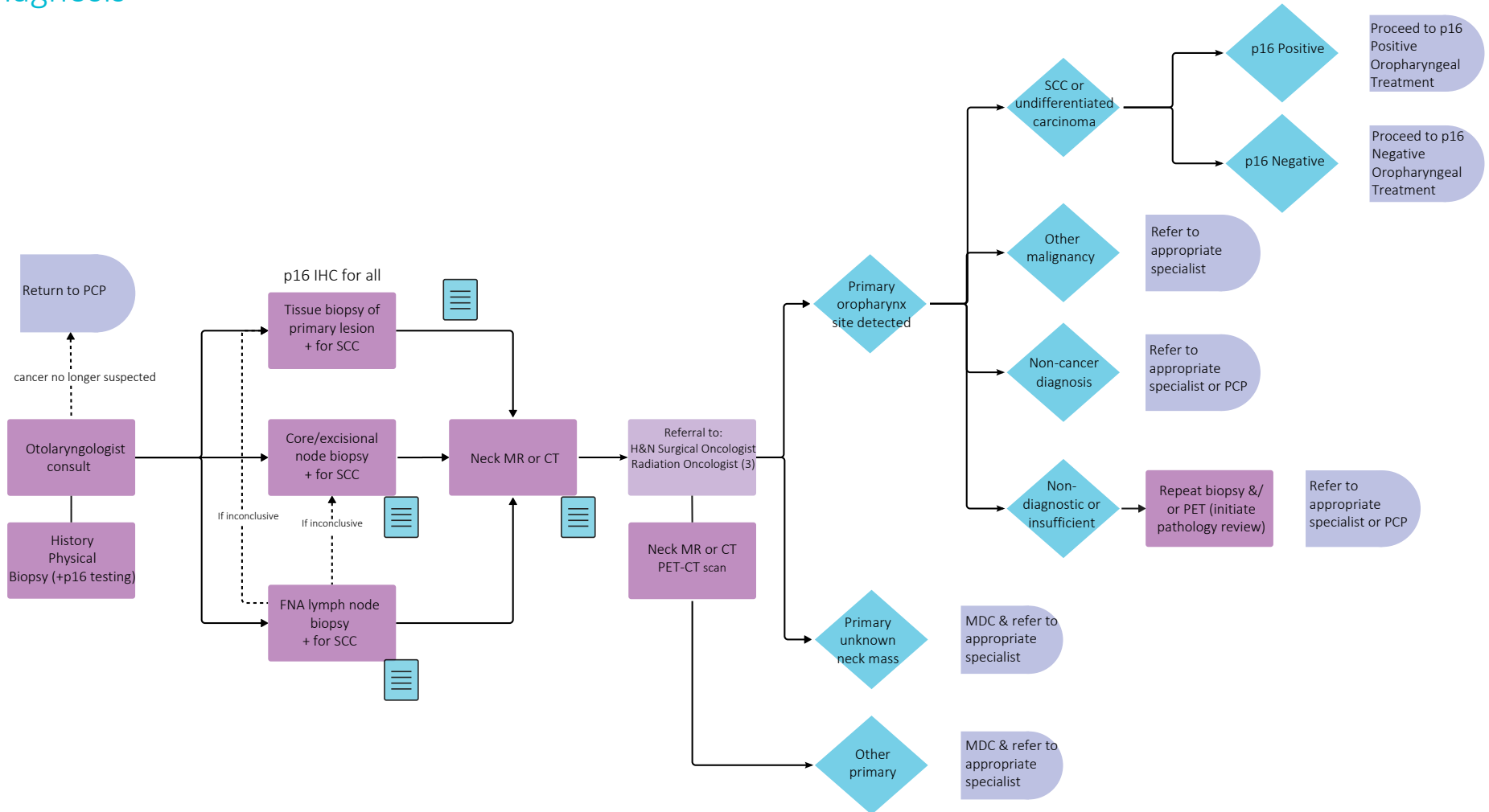
Pre-Diagnosis



Other referrals may include:

Consider smoking cessation counselling (as appropriate) (2)

Diagnosis



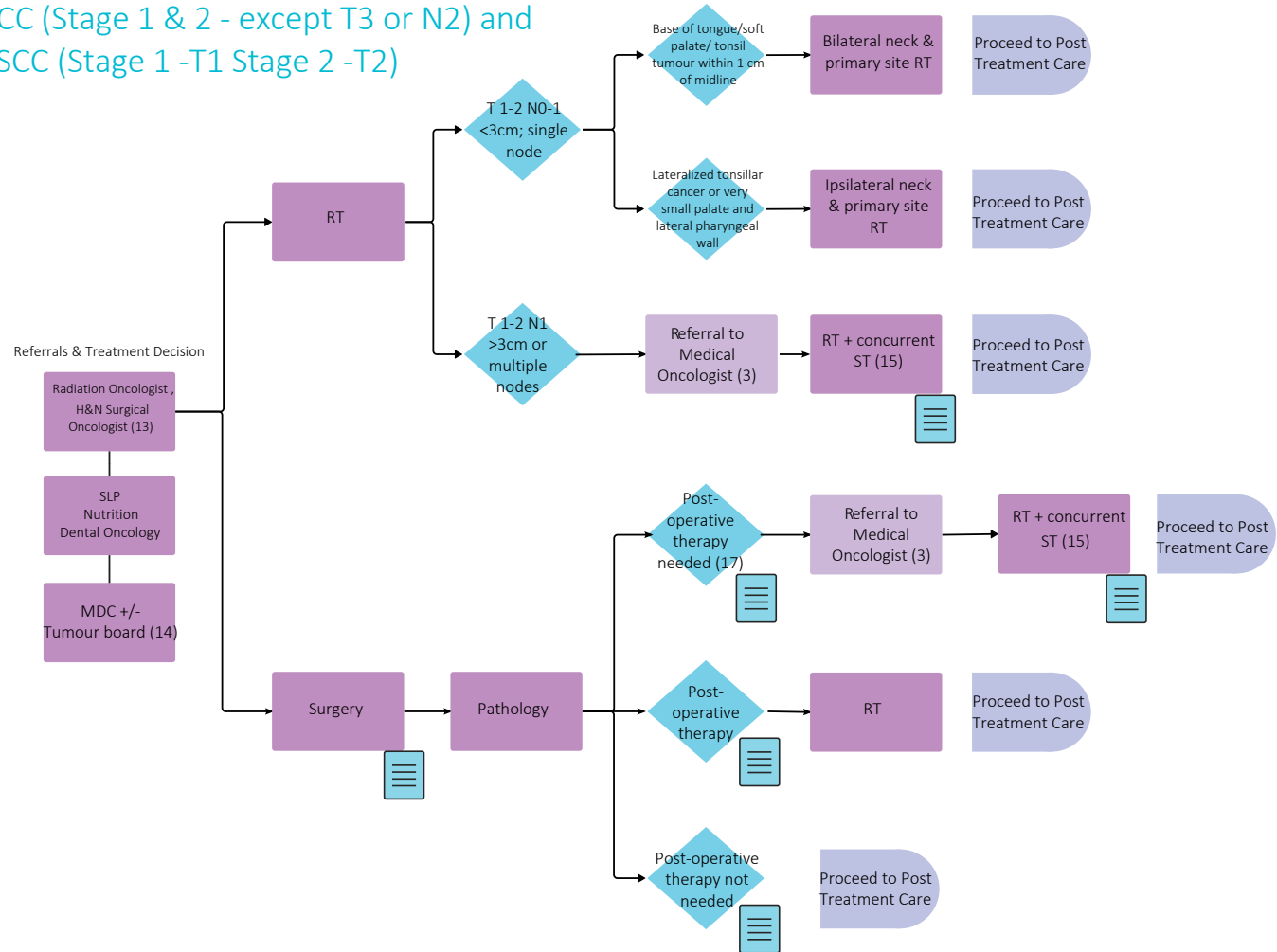
Throughout treatment, consider...

Regular symptom & performance status assessment (4); Supportive care (5, 6); Sexual & reproductive health (7, 8, 9); Co-morbidity management & medication review; Risk factor mitigation; Clinical trials (where applicable) (10); Goals of care (11); Cultural safety (12); Involvement of PCP

Head & Neck Tumour Group - Oropharyngeal Pathway

Treatment

p16 Positive Oropharyngeal SCC (Stage 1 & 2 - except T3 or N2) and p16 Negative Oropharyngeal SCC (Stage 1 -T1 Stage 2 -T2)



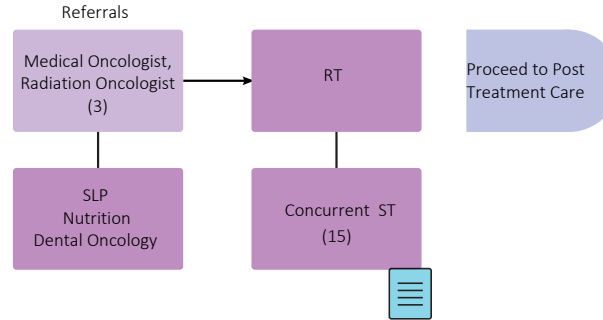
Throughout treatment, consider...



Regular symptom & performance status assessment (4); Supportive care (5, 6); Sexual & reproductive health (7, 8, 9); Co-morbidity management & medication review; Risk factor mitigation; Clinical trials (where applicable) (10); Goals of care (11); Cultural safety (12); Involvement of PCP

Treatment

p16 Positive Oropharyngeal SCC (Stage 2 T3 or N2, or Stage 3) and
p16 Negative Oropharyngeal SCC (Stage 3, 4A-B)



Other referrals may include:

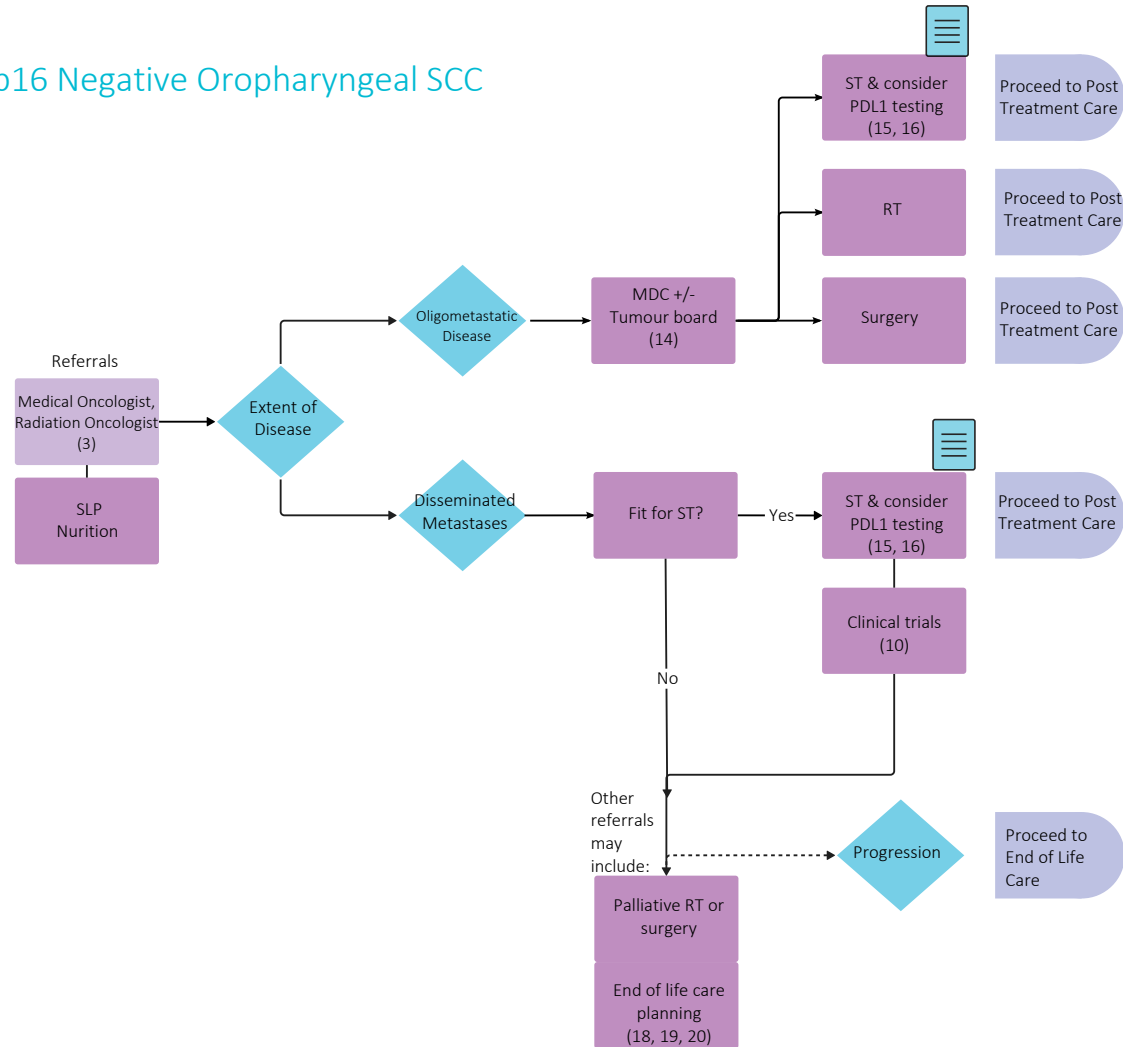
Nursing	Social Work
Physiotherapy	Audiology
PSMPC & PFC (5, 6)	Smoking Cessation Program (2)
MDC +/- Tumour board (14)	Consider need for enteral feeding

Throughout treatment, consider...

Regular symptom & performance status assessment (4); Supportive care (5, 6); Sexual & reproductive health (7, 8, 9); Co-morbidity management & medication review; Risk factor mitigation; Clinical trials (where applicable) (10); Goals of care (11); Cultural safety (12); Involvement of PCP

Treatment

Distant Metastatic p16 Positive and p16 Negative Oropharyngeal SCC



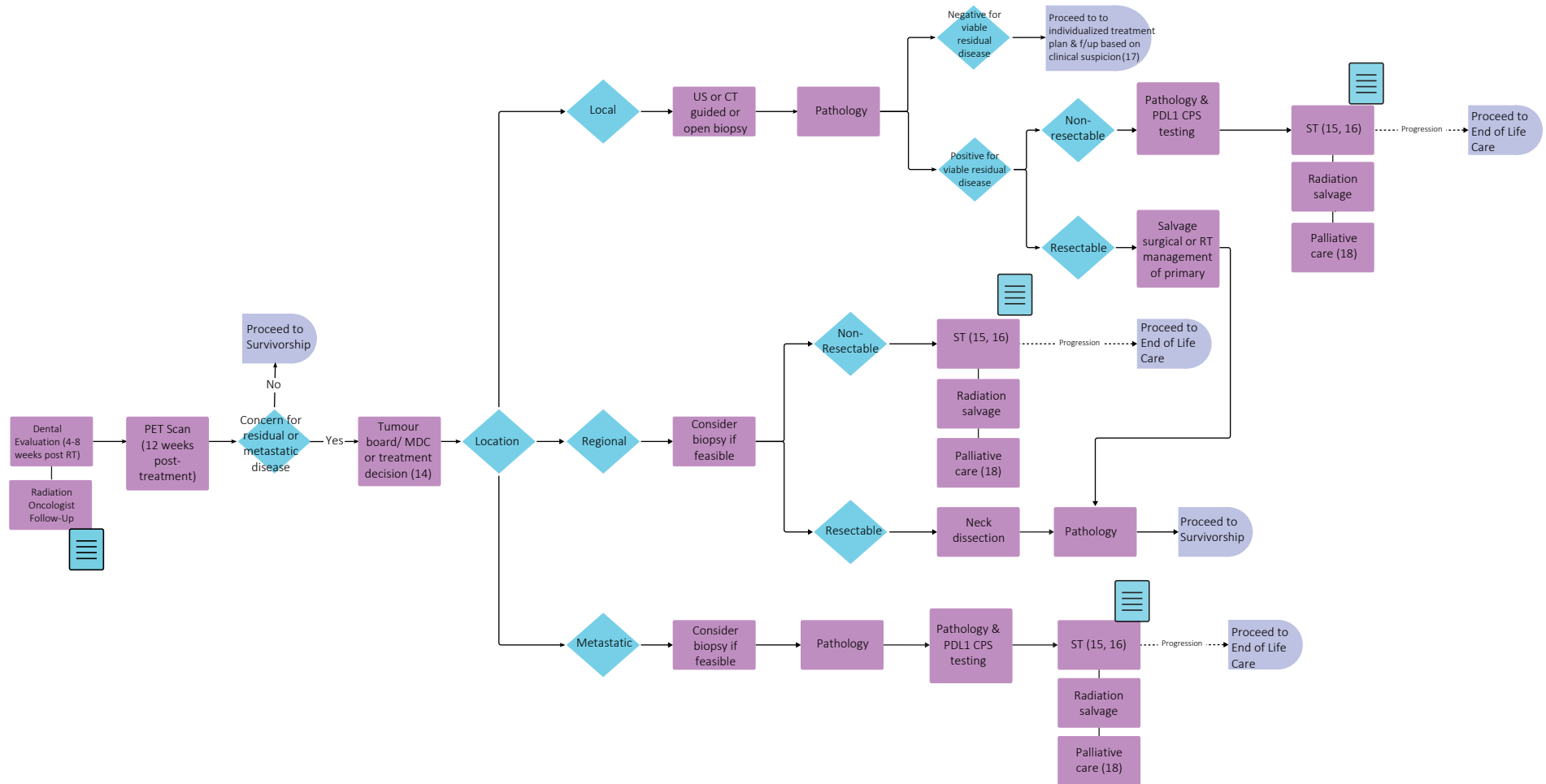
Other referrals may include:

Nursing	Social Work
Physiotherapy	Audiology
PSMPC & PFC (5, 6)	Smoking Cessation Program (2)
MDC +/- Tumour board (14)	Surgical Oncology
Home Care	Dental Oncology

Throughout treatment, consider...

Regular symptom & performance status assessment (4); Supportive care (5, 6); Sexual & reproductive health (7, 8, 9); Co-morbidity management & medication review; Risk factor mitigation; Clinical trials (where applicable) (10); Goals of care (11); Cultural safety (12); Involvement of PCP

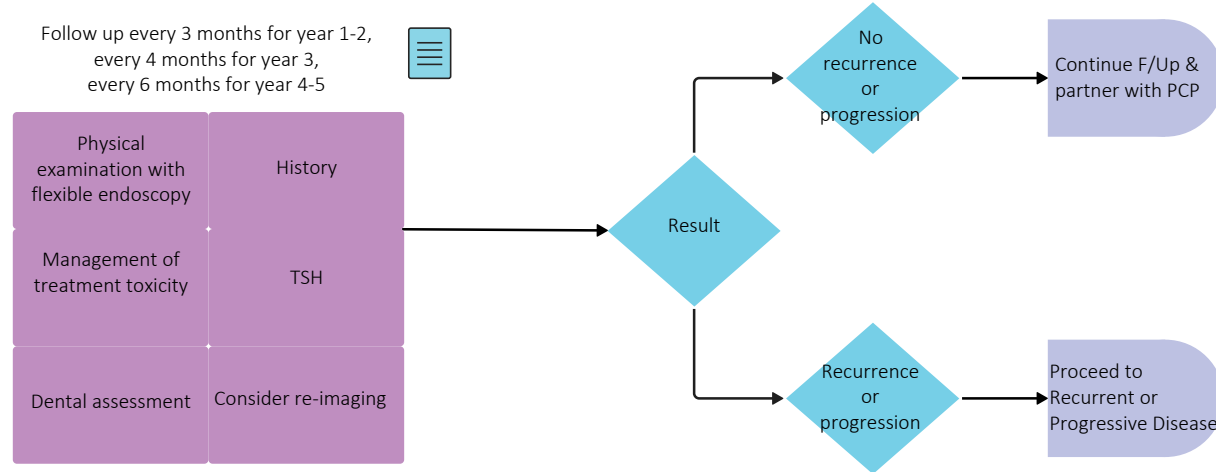
Post-Treatment Care



Throughout treatment, consider...

Regular symptom & performance status assessment (4); Supportive care (5, 6); Sexual & reproductive health (7, 8, 9); Co-morbidity management & medication review; Risk factor mitigation; Clinical trials (where applicable) (10); Goals of care (11); Cultural safety (12); Involvement of PCP

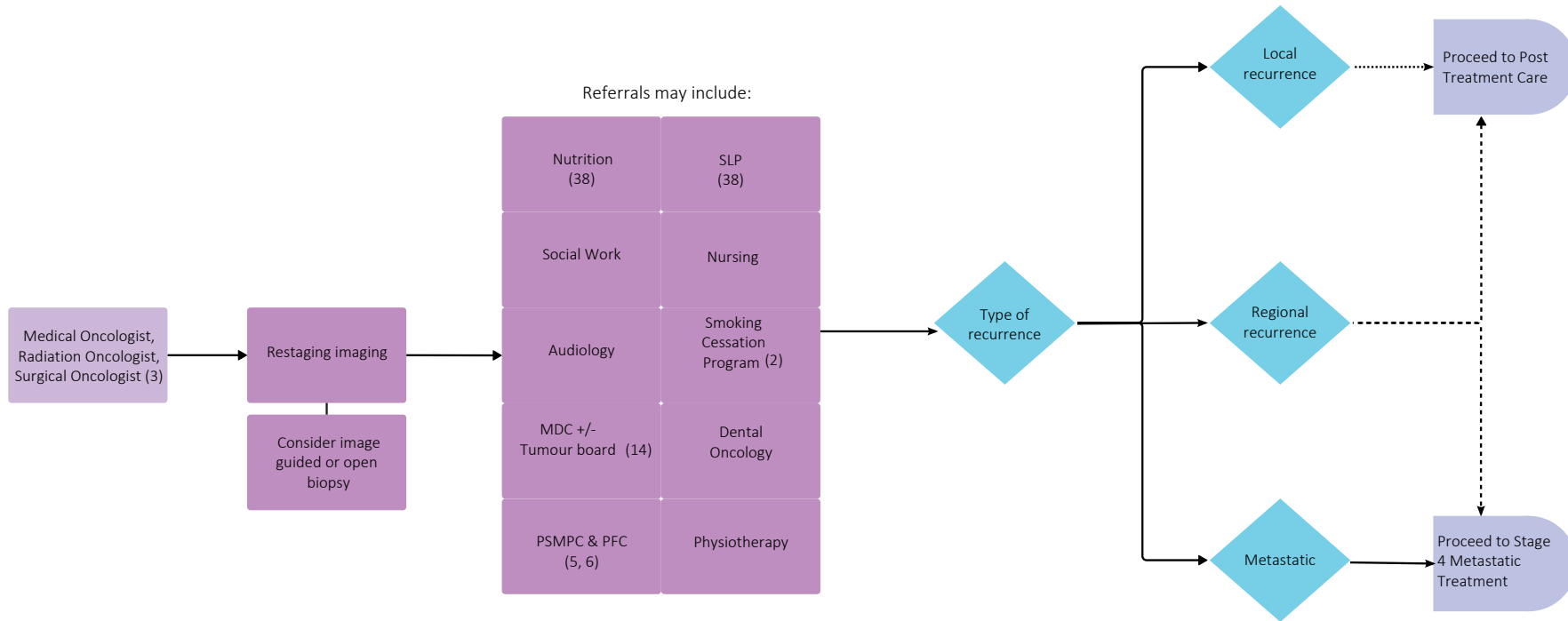
Survivorship



Throughout treatment, consider...

Regular symptom & performance status assessment (4); Supportive care (5, 6); Sexual & reproductive health (7, 8, 9); Co-morbidity management & medication review; Risk factor mitigation; Clinical trials (where applicable) (10); Goals of care (11); Cultural safety (12); Involvement of PCP

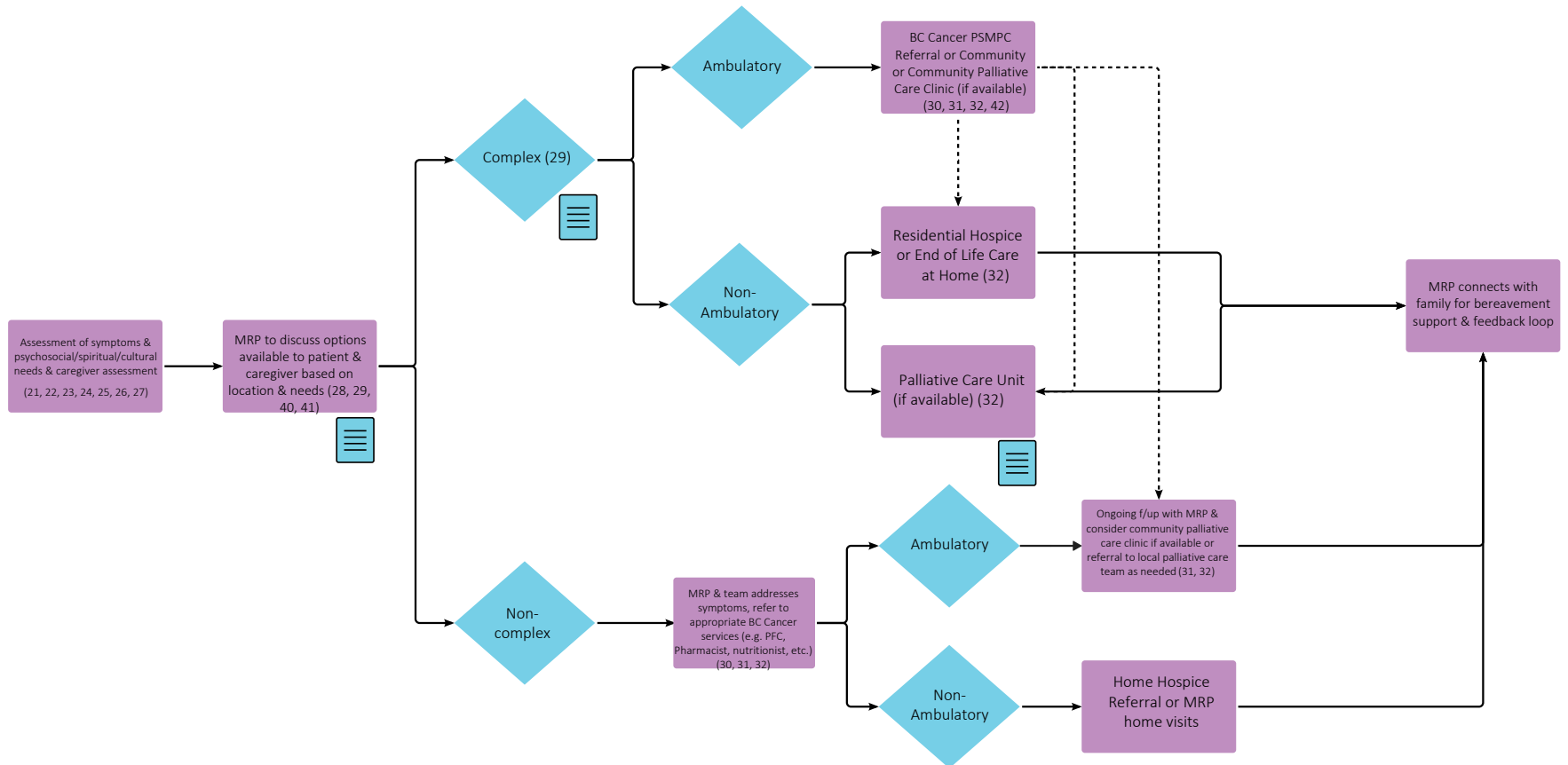
Recurrent or Progressive Disease



Throughout treatment, consider...

Regular symptom & performance status assessment (4); Supportive care (5, 6); Sexual & reproductive health (7, 8, 9); Co-morbidity management & medication review; Risk factor mitigation; Clinical trials (where applicable) (10); Goals of care (11); Cultural safety (12); Involvement of PCP

End of Life Care



Throughout treatment, consider...

Goals of Care Discussion & Consideration of Cultural Safety (17, 6, 19, 20, 28, 29, 36, 42)

Subject Matter Expert Working Group & COIs

Nicole Chau, Project Lead, Medical Oncologist
COI pending

Sarah Hamilton, Project Lead, Radiation Oncologist
No disclosures

Donald Anderson, Surgical Oncologist
COI pending

Oleksandr Butskiy, Surgical Oncologist
No disclosures

Hilary Cochrane, Speech Language Pathologist
No disclosures

Lawren Fischer, Dietitian
COI pending

Cheryl Ho, Medical Oncologist
Abbvie, Amgen, AstraZeneca, Bayer, BMS, Eisai, Jazz, Janssen,
Merck, Novartis, Pfizer, Roche, Sanofi, Sterimax

Minette Lagman, Nurse Practitioner
COI pending

David MacDonald, Radiologist
No disclosures

Monty Martin, Radiologist
COI pending

Nahal Namdaran, Speech Language Pathologist
No disclosures

Tony Ng, Pathologist
Bayer, Roche

Harman Parhar, Surgeon
No disclosures

Eitan Prisman, Surgical Oncologist
COI pending

Eric Tran, Radiation Oncologist
COI pending

Pathway Program Team

Tammy Currie, Executive Director, Provincial Programs
Amilya Ladak, Policy Analyst, Tumour Groups
Shaifa Nanji, Manager, Tumour Groups
Sonia Panesar, Project Coordinator, Tumour Groups
Christine Simmons, Tumour Group Council Chair
Elaine Wai, Senior Executive Director, Medical Affairs and Quality
Sarah Weller, Director, Provincial Programs

Other Stakeholders

Family Practice & GPO
Indigenous Cancer Control
Nursing Community of Practice (NCoP)
Patient and Family Experience team
Provincial Pharmacy
Radiation Therapists
Surgical Oncology Network

Appendix

- 1 <http://www.bccancer.bc.ca/health-professionals/professional-resources/clinical-care-pathways>
- 2 <http://www.bccancer.bc.ca/health-professionals/clinical-resources/smoking-cessation-program>
- 3 <http://www.bccancer.bc.ca/health-professionals-site/Documents/Patient-Referral-Form.pdf>
- 4 <https://www.uptodate.com/contents/image?imageKey=HEME%2F72901>
- 5 <http://www.bccancer.bc.ca/our-services/services/supportive-care>
- 6 <http://www.bccancer.bc.ca/our-services/services/support-programs>
- 7 <https://www.olivefertility.com/referring-physicians>
- 8 <https://www.pacificfertility.ca/physician-resources>
- 9 <http://www.bccancer.bc.ca/health-info/coping-with-cancer/managing-symptoms-side-effects/sexual-health>
- 10 <https://www.bccrc.ca/dept/cid/clinical-trials>
- 11 <http://www.bccancer.bc.ca/new-patients-site/Documents/ACP-goals-of-care-orders.pdf>
- 12 <http://www.phsa.ca/aboriginal-health-site/Documents/IPN%20Fillable%20Referral%20Form.pdf>
- 13 <https://pubmed.ncbi.nlm.nih.gov/28094848/>
- 14 <http://www.bccancer.bc.ca/books/Documents/Clinical%20Care%20Pathways/Patient%20Conference%20Order.pdf>
- 15 <http://www.bccancer.bc.ca/health-professionals/clinical-resources/chemotherapy-protocols/head-neck>
- 16 <http://www.bccancer.bc.ca/systemic-therapy-site/Documents/Policy%20and%20Forms/Patient%20assistance%20programs.pdf>
- 17 <https://www.nccn.org/patients/guidelines/content/PDF/hn-oropharyngeal-patient.pdf>
- 18 <http://www.bccancer.bc.ca/our-services/services/supportive-care/pain-symptom-management>
- 19 <http://www.bccancer.bc.ca/new-patients-site/Documents/ACP-tips-for-oncology-professionals.pdf>
- 20 <http://www.bccancer.bc.ca/managing-symptoms-site/Documents/When-Life-Nearing-its-End.pdf>
- 21 <http://www.bccancer.bc.ca/books/Documents/Clinical%20Care%20Pathways/Revised%20PSMPC%20Questionnaire%20Pink%20Form%202020-21.pdf>
- 22 <http://www.bccancer.bc.ca/our-services/centres-clinics/bc-cancer-vancouver/epicc>
- 23 https://www2.gov.bc.ca/assets/gov/health/practitioner-pro/bc-guidelines/palliative1_appendix_a.pdf
- 24 <https://bc-cpc.ca/wp-content/uploads/2018/09/SMGs-interactive-final-Nov-30-compressed.pdf>
- 25 <https://www2.gov.bc.ca/gov/content/health/practitioner-professional-resources/bc-guidelines/palliative-care>
- 26 <https://www2.gov.bc.ca/gov/content/health/practitioner-professional-resources/pharmacare/prescribers/plan-p-bc-palliative-care-benefits-program>
- 27 <http://www.bccancer.bc.ca/our-services/services/indigenous-cancer-control>
- 28 <http://www.bccancer.bc.ca/new-patients-site/Documents/SeriousIllnessConversationGuideCard.pdf>
- 29 <http://www.phsa.ca/health-info/medical-assistance-in-dying>
- 30 <http://www.bccancer.bc.ca/managing-symptoms-site/Documents/PSMPC-Referral-Form-for-All-BC-Cancer-Centres.pdf>
- 31 <http://www.bccancer.bc.ca/our-services/services/supportive-care/pain-symptom-management#What--we--do>
- 32 https://vancouver.pathwaysbc.ca/service_categories/24
- 33 <http://www.bccancer.bc.ca/new-patients-site/Documents/Goals%20of%20Care%20Orders%20Form%20June%202018%20Final.pdf>
- 34 <https://cap.phsa.ca/>

Appendix

- 35 <http://www.bccancer.bc.ca/prevent/alcohol/reduce-your-risk>
- 36 <https://www2.gov.bc.ca/assets/gov/people/seniors/health-safety/pdf/myvoice-advancecareplanningguide.pdf>
- 37 <https://www2.gov.bc.ca/gov/content/family-social-supports/seniors/health-safety/advance-care-planning>
- 38 <http://www.bccancer.bc.ca/coping-and-support-site/Documents/Support%20Programs/Supportive-Care-External-Referral-Form.pdf>
- 39 <http://www.bccancer.bc.ca/health-professionals/clinical-resources/pharmacy#Contact--info>
- 40 <https://www2.gov.bc.ca/gov/content/health/practitioner-professional-resources/bc-guidelines/guidelines-by-alphabetical-listing#P>
- 41 <https://www.bc-cpc.ca/publications/symptom-management-guidelines/>
- 42 http://www.bccancer.bc.ca/new-patients-site/Documents/MIPPC_Referral_Form.pdf