

Primary Care Practitioners
(Family Practice)

Indigenous Cancer Care

Supportive Care

(Counselling, Psychiatry, Nutrition, Speech Language Pathology, Physiotherapy, Pain & Symptom Management/Palliative Care)

This figure represents a general pathway of care that most people with cancer will experience. It shows

- The major phases of a cancer journey
- How a person might progress through each phase
- Key supportive services that are available throughout each person's cancer journey

Please visit the [Clinical Pathways Web](#) page for

- Tumour Group Clinical Pathways
- Patient Companion Guide
- Methodology Reports

Target Population

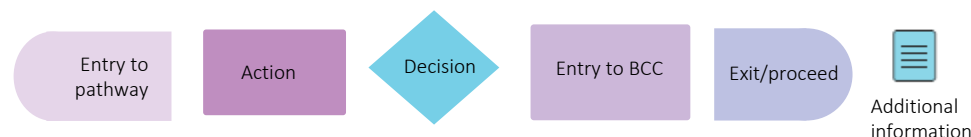
The target population for this pathway include health care providers such as primary care practitioners, oncologists, specialists, nurses, and other members of a health care team including allied health providers. Healthcare administrators across BC Cancer and the health authorities may also benefit from this resource for systems and operational planning.

Pathway Disclaimer

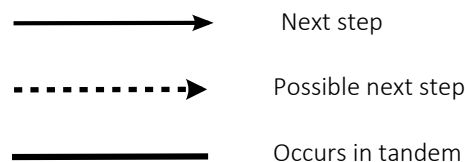
This pathway is an informational resource, intended to provide a high-level overview of the treatment journey a patient in British Columbia may receive. This pathway is not a substitute for medical advice and clinical judgment is still required as not all care trajectories will follow the proposed steps outlined in the pathway. This resource may not reflect all available evidence as research continues to evolve rapidly and BC Cancer is not responsible for any incomplete information. Furthermore, BC Cancer and those involved in developing this pathway are not liable for any incidental or consequential outcomes related to the information in this pathway. Anyone using the information provided in this pathway does so at their own risk.

Pathway Map Legend

Shape Guide



Line Guide



Pathway Map Considerations

This pathway is intended as a high-level resource and therefore does not include specific recommendations on specific systemic therapy protocols or radiation therapy doses. Instead, additional information can be sought via the inserted hyperlinks to resources that may aid a clinician in their treatment planning. The level of detail for each pathway was guided by the tumor group lead and intentionally kept high-level and represents the overall ideal pathway of care for a patient in general. Each patient will have individual needs and each cancer centre may have variation in the way care is delivered, but overall the intent was to represent the pathway that the majority of patients will follow.

General Resources

MDC Referral Form (1): <http://www.bccancer.bc.ca/books/Documents/Clinical%20Care%20Pathways/Patient%20Conference%20Order.pdf>

Indigenous Patient Navigator Referral Form (49): <http://www.phsa.ca/aboriginal-health-site/Documents/IPN%20Fillable%20Referral%20Form.pdf>

Supportive Care (30): <http://www.bccancer.bc.ca/our-services/services/supportive-care>

Compassionate Access Program (CAP) (48): <https://cap.phsa.ca/>

Myeloid Chemotherapy Protocols (28): <http://www.bccancer.bc.ca/health-professionals/clinical-resources/chemotherapy-protocols/leukemia-bone-marrow-transplant#Leukemia>

Manufacturer Patient Assistance Programs (7): <http://www.bccancer.bc.ca/systemic-therapy-site/Documents/Policy%20and%20Forms/Patient%20assistance%20programs.pdf>

BC Cancer Research Clinical Trials (16): <https://www.bccrc.ca/dept/cid/clinical-trials>

Smoking Cessation Program (24): <http://www.bccancer.bc.ca/health-professionals/clinical-resources/smoking-cessation-program>

Alcohol Reduction (50): <http://www.bccancer.bc.ca/prevent/alcohol/reduce-your-risk>

Pharmacy Contact Info (51): <http://www.bccancer.bc.ca/health-professionals/clinical-resources/pharmacy#Contact--info>

Canadian Virtual Hospice (60): https://www.virtualhospice.ca/en_US/Main+Site+Navigation/Home.aspx

Pediatric Oncology Hematology Network Referral Form (62): <http://www.bcchildrens.ca/health-professionals/refer-a-patient/oncology-referral>

Language & Translation Services (63): <http://www.phsa.ca/health-professionals/professional-resources/language-services/translation>

Abbreviations

CML: Chronic Myeloid Leukemia

ESA: Erythropoiesis-Stimulating Agents

ET: Essential Thrombocythemia

GVHD: Graft Versus Host Disease

HMA: Hypomethylating Agents

LBMT: Leukemia/Bone Marrow Transplant Program

MDC: Multidisciplinary Conference/Discussion

MDS: Myelodysplastic Syndromes/neoplasms

MMR: Major Molecular Response

MPN: Myeloproliferative Neoplasms

MRD: Minimal/measurable Residual Disease

MRP: Most Responsible Provider

PCP: Primary Care Provider

PSMPC: Pain & Symptom Management & Palliative Care

PV: Polycythemia Vera

RT: Radiation Therapy

ST: Systemic Therapy

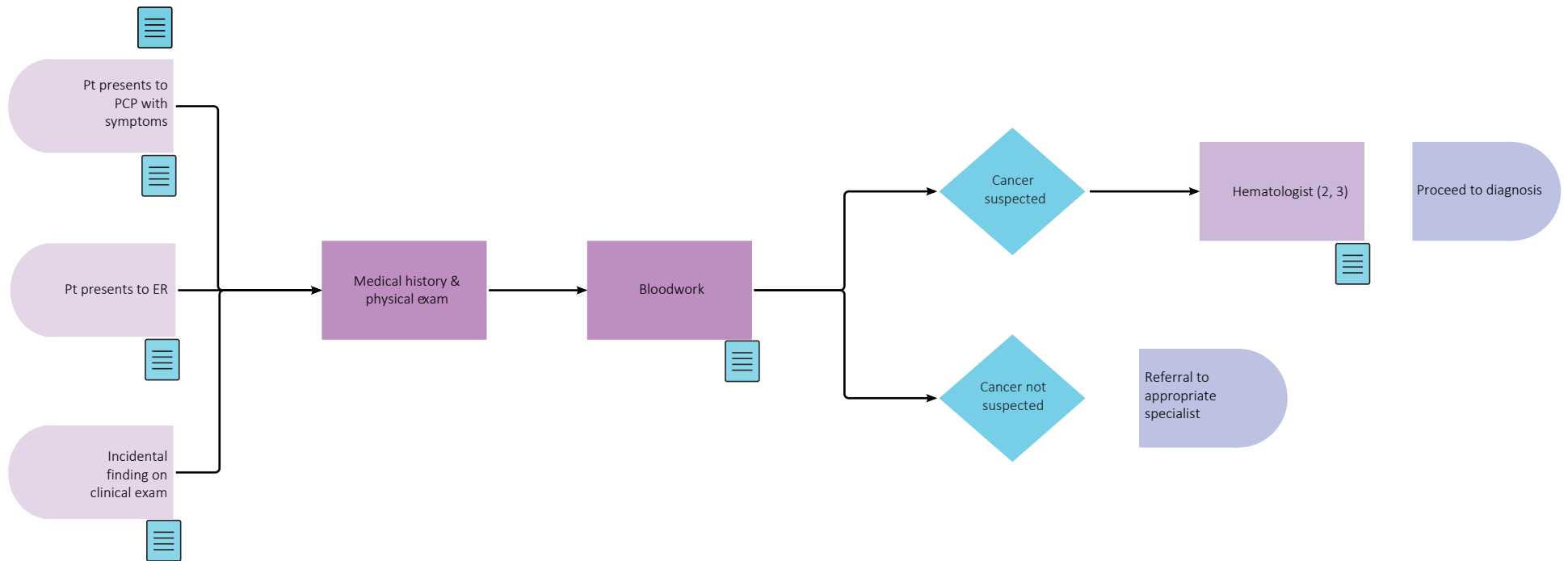
TKI: Tyrosine Kinase Inhibitor

Additional Information

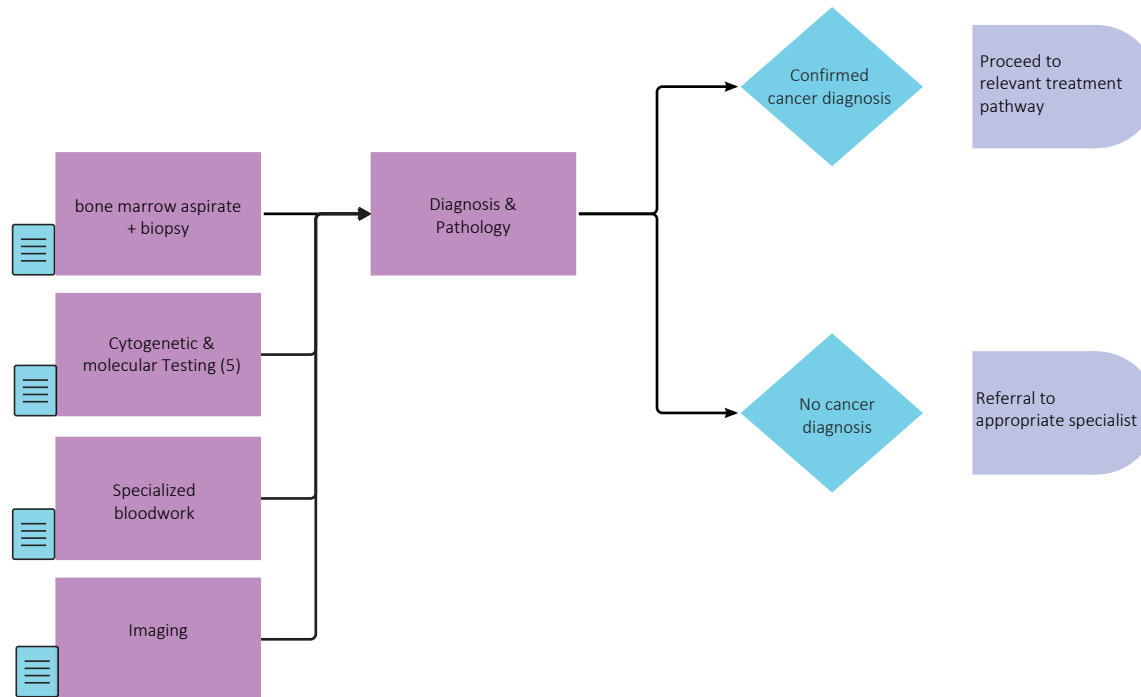
To learn more about how the Clinical Care Pathways are developed, visit the [Methodology Report](#).

Other Tumour Group Clinical Care Pathways can be found on the [BC Cancer Website](#).

Pre-Diagnosis



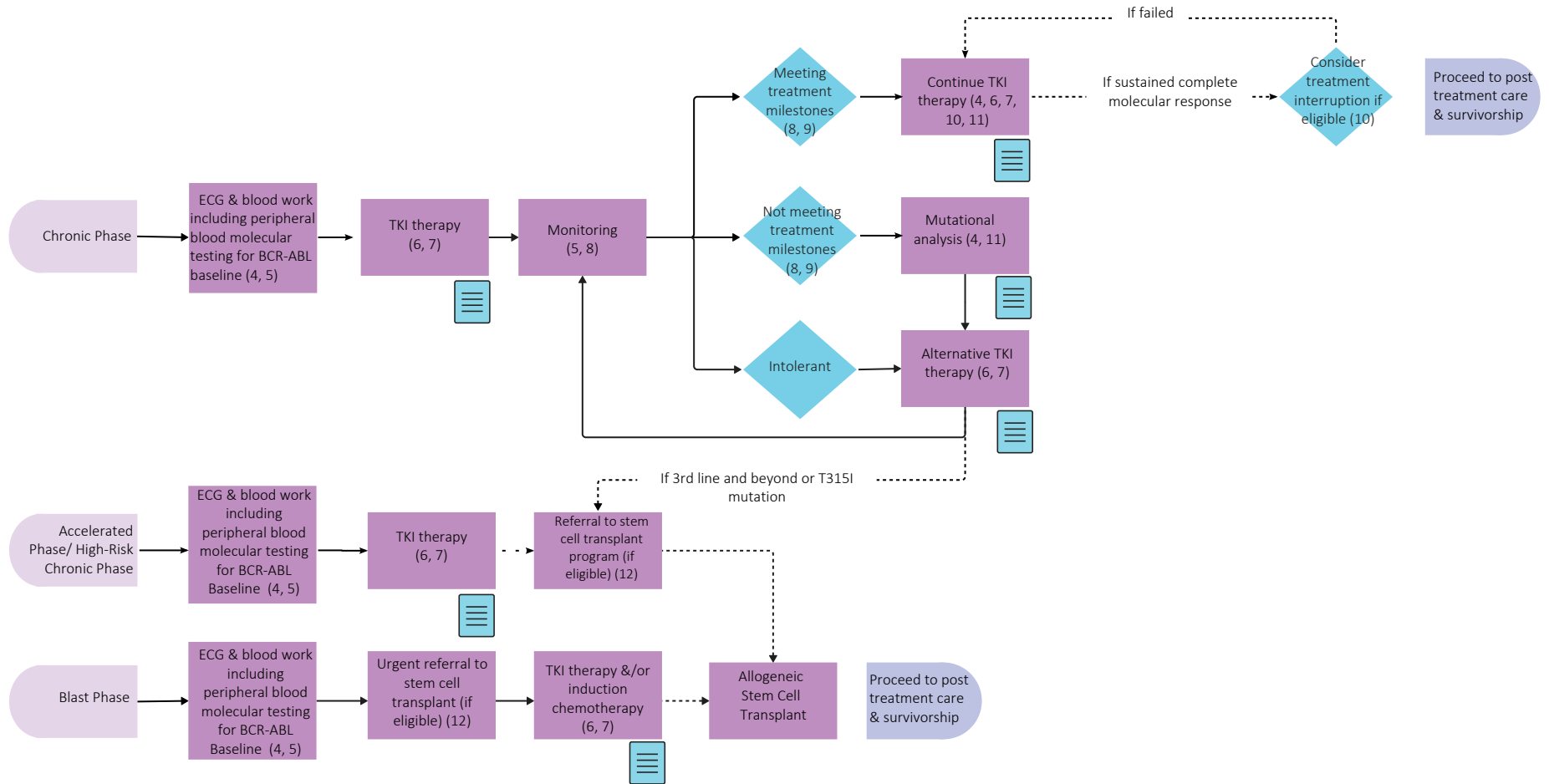
Diagnosis



Throughout treatment, consider...

Regular symptom & performance status assessment (5); Supportive care (30, 31); Sexual & reproductive health (53, 54, 55); Co-morbidity management & medication review; Risk factor mitigation; Clinical trials (where applicable) (16); Goals of care (56); Cultural safety (49); Involvement of PCP

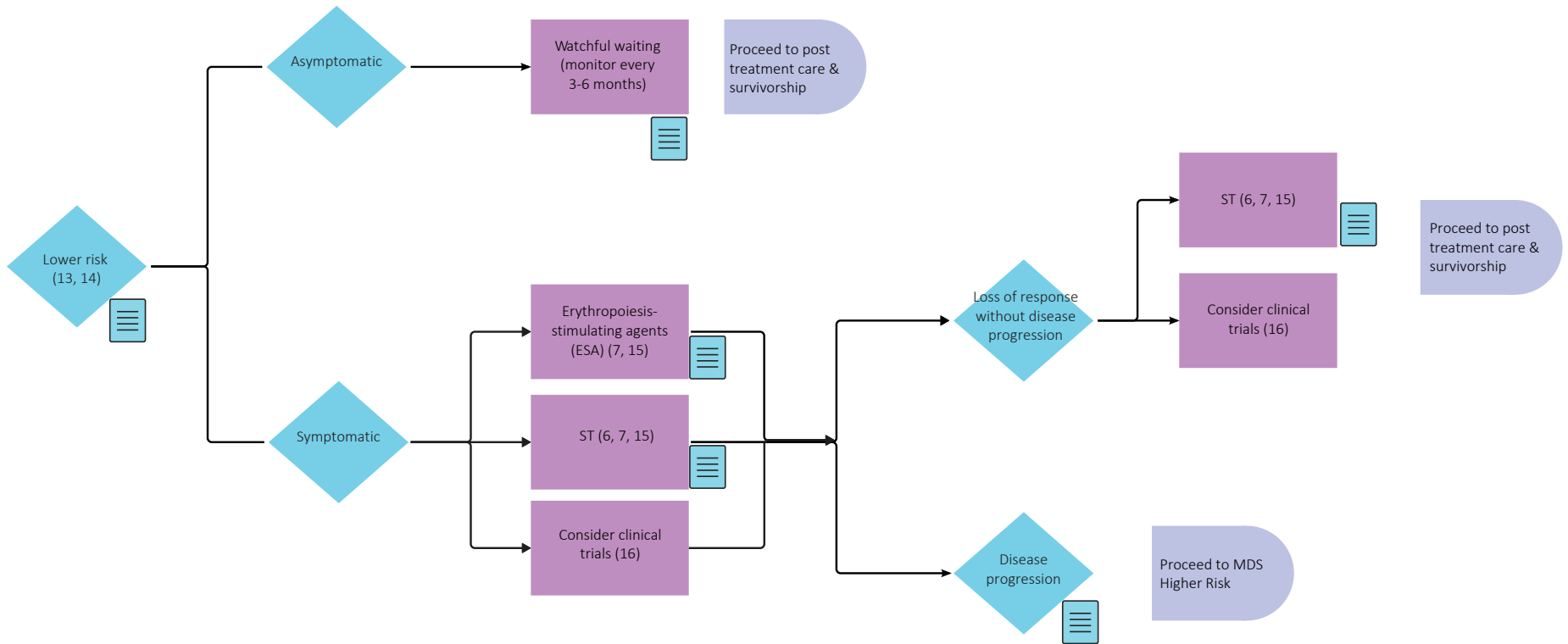
Chronic myeloid leukemia (CML)



Throughout treatment, consider...

Regular symptom & performance status assessment (5); Supportive care (30, 31); Sexual & reproductive health (53, 54, 55); Co-morbidity management & medication review; Risk factor mitigation; Clinical trials (where applicable) (16); Goals of care (56); Cultural safety (49); Involvement of PCP

Myelodysplastic syndromes/neoplasms (MDS) - Lower Risk (20)

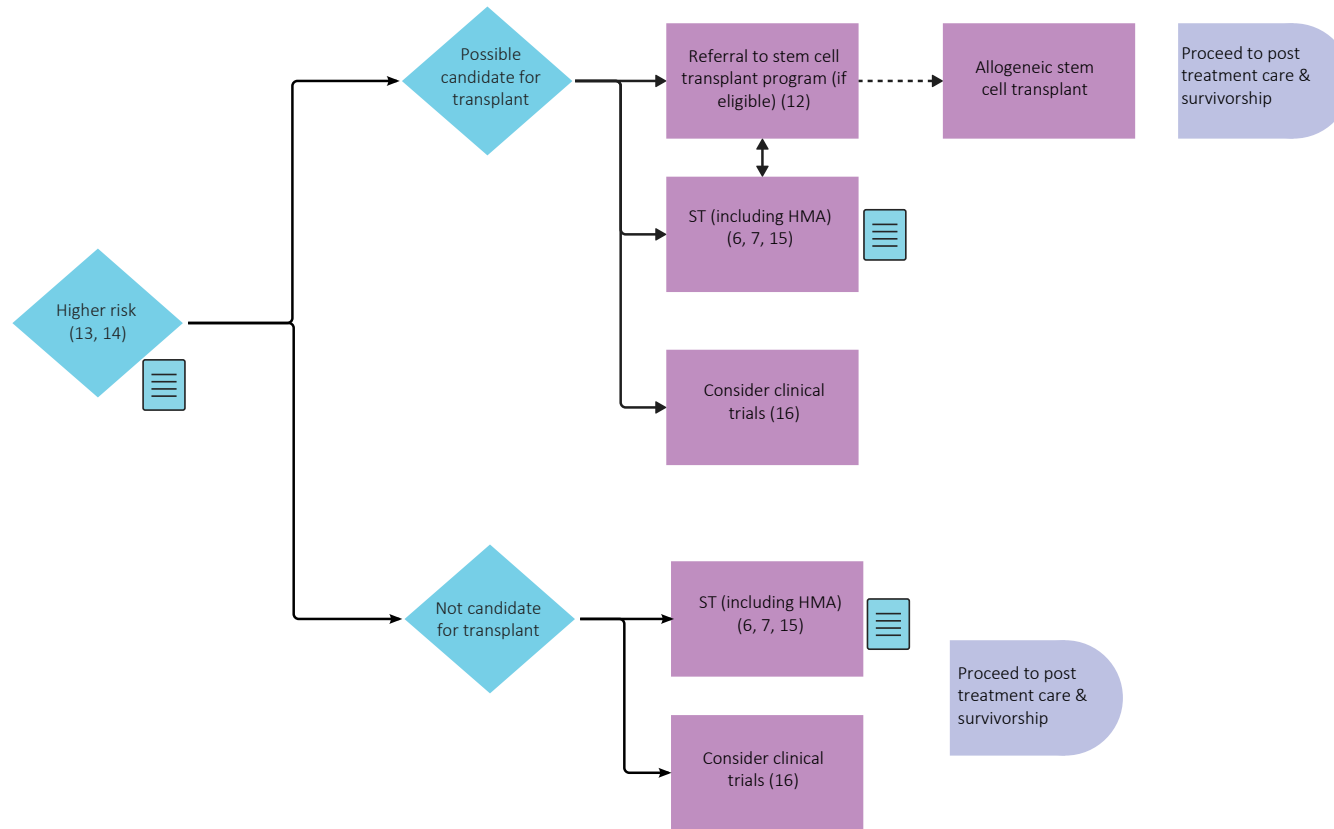


Red cell and platelet transfusions as needed & consider iron chelation (18, 19, 21)

Throughout treatment, consider...

Regular symptom & performance status assessment (5); Supportive care (30, 31); Sexual & reproductive health (53, 54, 55); Co-morbidity management & medication review; Risk factor mitigation; Clinical trials (where applicable) (16); Goals of care (56); Cultural safety (49); Involvement of PCP

Myelodysplastic syndromes/neoplasms (MDS) - Higher Risk

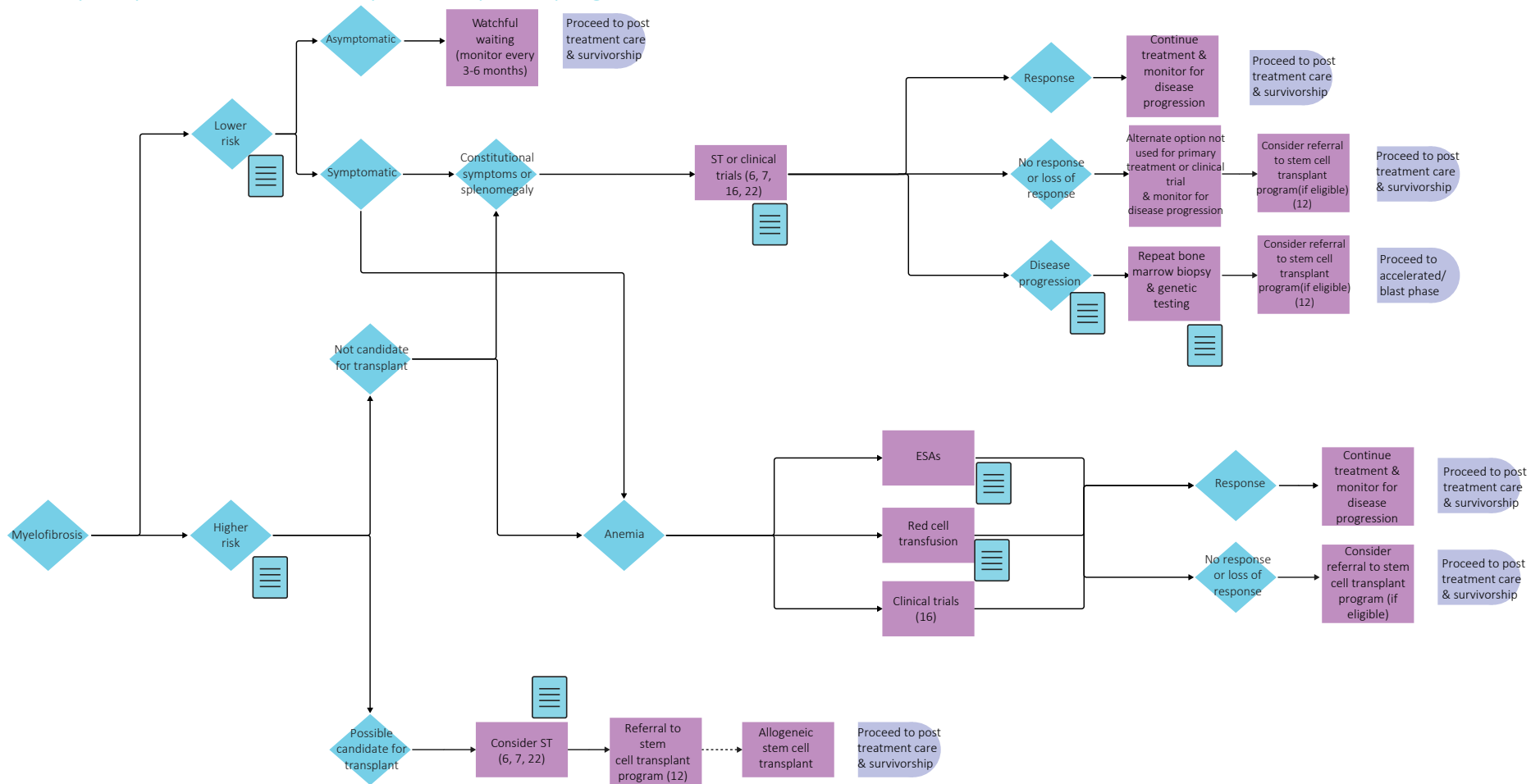


Red cell and platelet transfusions as needed & consider iron chelation (18, 19, 21)

Throughout treatment, consider...

Regular symptom & performance status assessment (5); Supportive care (30, 31); Sexual & reproductive health (53, 54, 55); Co-morbidity management & medication review; Risk factor mitigation; Clinical trials (where applicable) (16); Goals of care (56); Cultural safety (49); Involvement of PCP

Myeloproliferative Neoplasms (MPN) Pg. 1

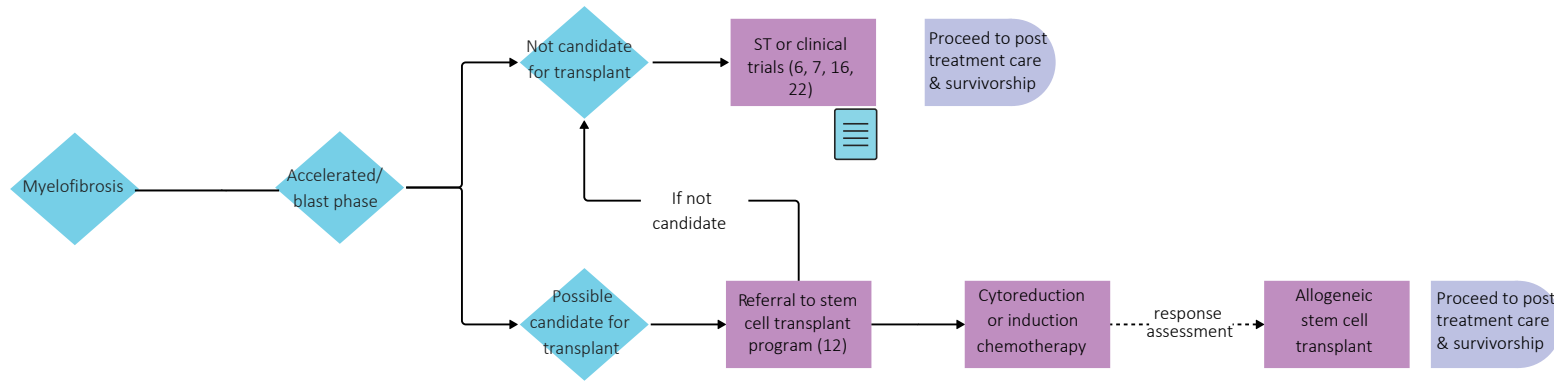


Red cell and platelet transfusions as needed & consider iron chelation (18, 19, 21)

Throughout treatment, consider...

Regular symptom & performance status assessment (5); Supportive care (30, 31); Sexual & reproductive health (53, 54, 55); Co-morbidity management & medication review; Risk factor mitigation; Clinical trials (where applicable) (16); Goals of care (56); Cultural safety (49); Involvement of PCP

Myeloproliferative Neoplasms (MPN) Pg. 2

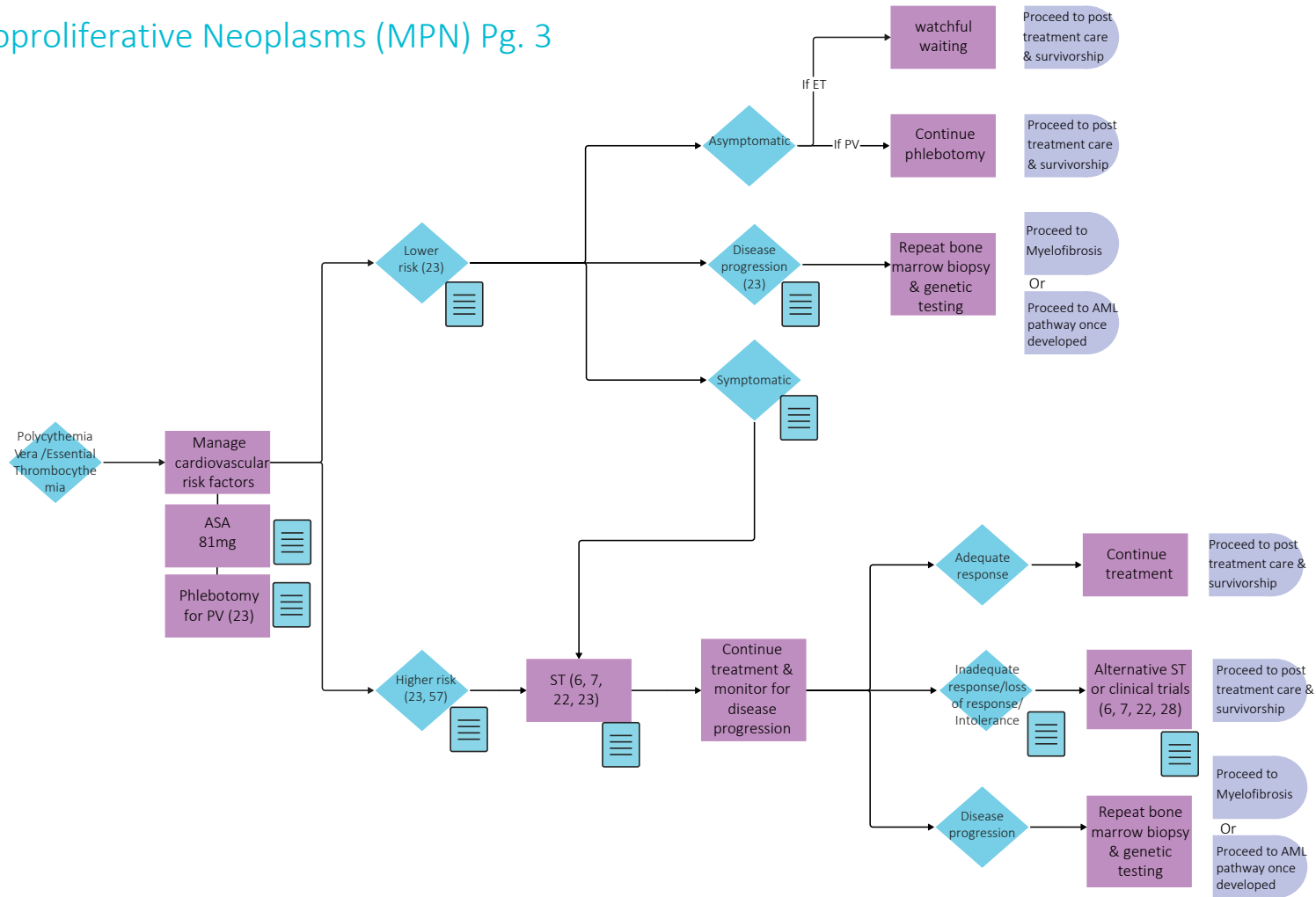


Red cell and platelet transfusions as needed & consider iron chelation (18, 19, 21)

Throughout treatment, consider...

Regular symptom & performance status assessment (5); Supportive care (30, 31); Sexual & reproductive health (53, 54, 55); Co-morbidity management & medication review; Risk factor mitigation; Clinical trials (where applicable) (16); Goals of care (56); Cultural safety (49); Involvement of PCP

Myeloproliferative Neoplasms (MPN) Pg. 3

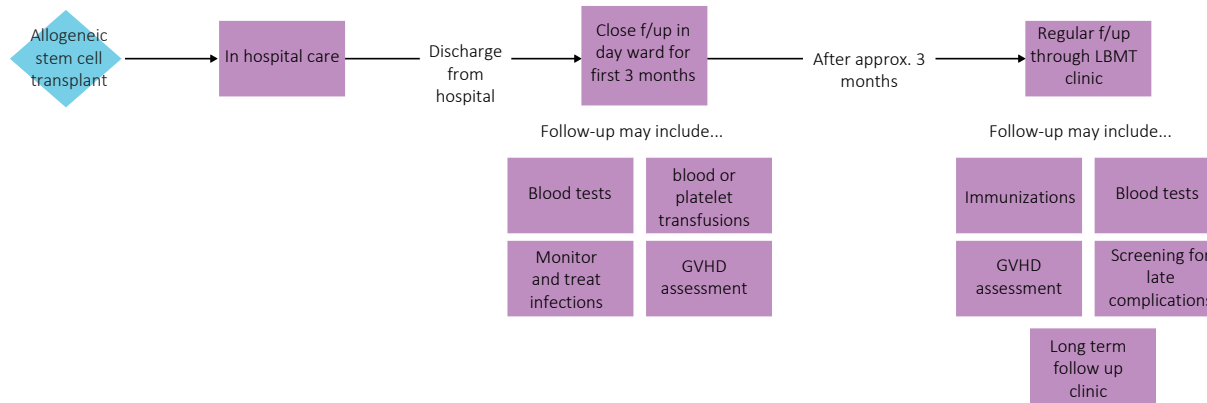


Cardiovascular risk factor management (24, 25, 26, 27)

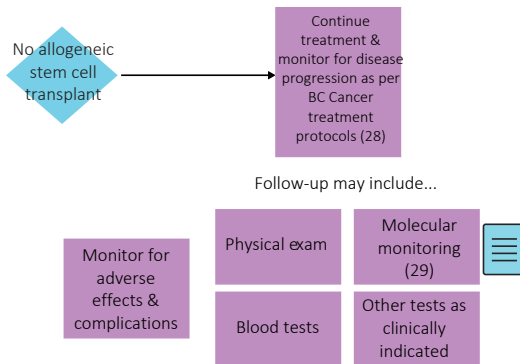
Throughout treatment, consider...

Regular symptom & performance status assessment (5); Supportive care (30, 31); Sexual & reproductive health (53, 54, 55); Co-morbidity management & medication review; Risk factor mitigation; Clinical trials (where applicable) (16); Goals of care (56); Cultural safety (49); Involvement of PCP

Post-Treatment Care & Survivorship



Cardiovascular risk factor management (24, 25, 27)

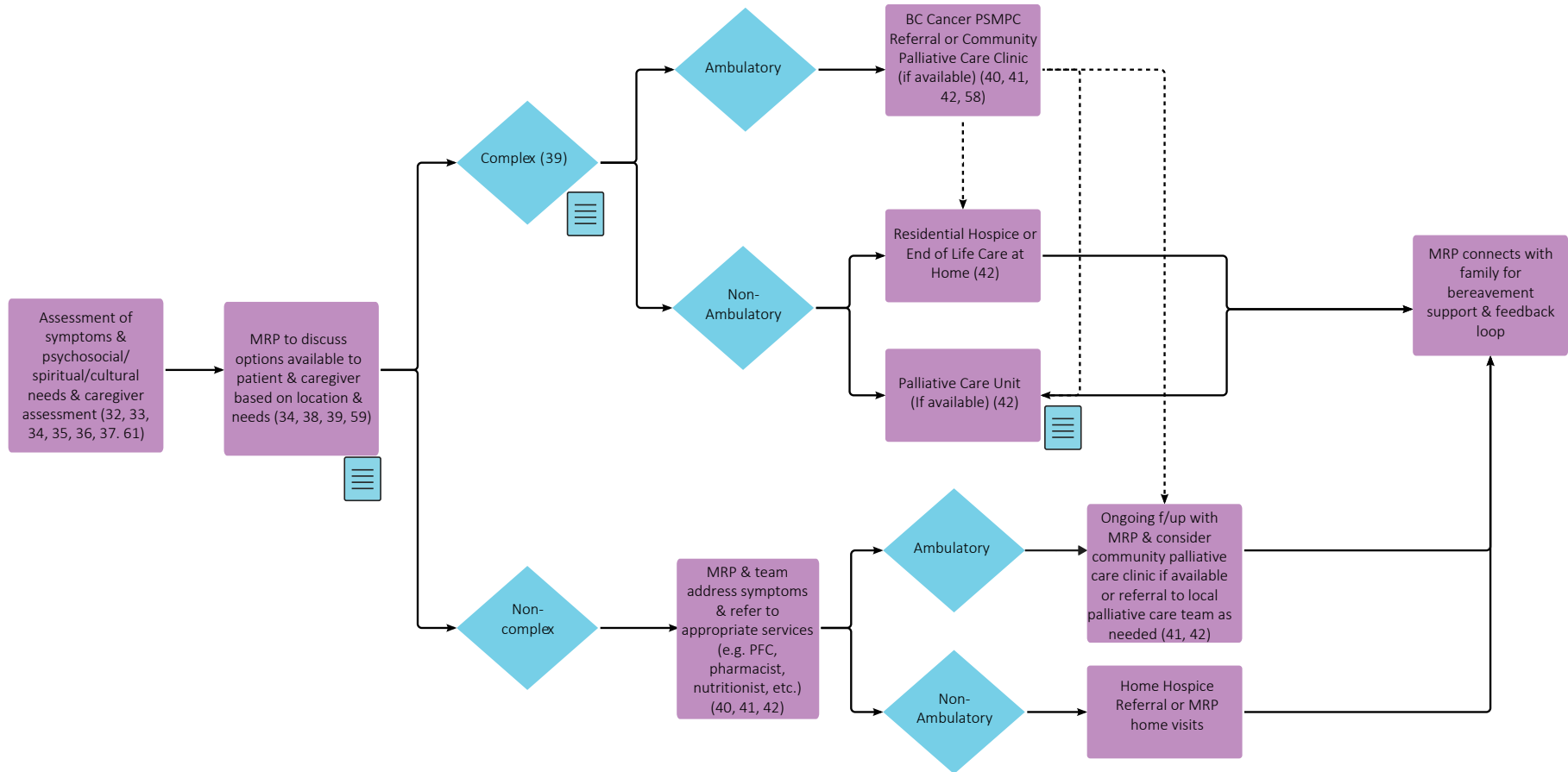


Consider supportive care needs (31, 41)

Throughout treatment, consider...

Regular symptom & performance status assessment (5); Supportive care (30, 31); Sexual & reproductive health (53, 54, 55); Co-morbidity management & medication review; Risk factor mitigation; Clinical trials (where applicable) (16); Goals of care (56); Cultural safety (49); Involvement of PCP

End of Life Care



Throughout treatment, consider...

Goals of Care Discussion & Consideration of Cultural Safety (38, 39, 43, 44, 45, 46, 47, 49)

Subject Matter Expert Working Group & COIs

Lynda Foltz, Project Lead, Hematologist

Novartis, GSK, Medison, Incyte, PharmaEssentia, CTI
Biopharma, BMS, Constellation GSK, Amgen,

Shanee Chung, Hematologist

Pfizer, Novartis, Takeda, Paladin, Astellas

Wendy Davis, Hematologist

Taiho, Novartis

Donna Forrest, Hematologist

Novartis

Jason Hart, Medical Oncologist

No disclosures

Heather Leitch, Hematologist

AbbVie, Alexion, Astra Zeneca, BeiGene, BMS, Celgene,
Forma, Janssen, Novartis, Novo Nordisk, Taiho

Eric McGinnis, Hematopathologist

Bionano Genomics

David Sanford, Hematologist

AbbVie, Astellas, Pfizer

Tyler Smith, Hematopathologist

No disclosures

Ryan Stubbins, Hematologist

AbbVie, Jazz Pharmaceuticals, Takeda, Astellas, Pfizer

Paul Yenson, Hematologist

No disclosures

Pathway Program Team

Tammy Currie, Executive Director, Provincial Programs

Amilya Ladak, Policy Analyst, Tumour Groups

James Loudon, Director, Provincial Programs

Shaifa Nanji, Manager, Tumour Groups

Sonia Panesar, Project Coordinator, Tumour Groups

Christine Simmons, Tumour Group Council Chair

Elaine Wai, Senior Executive Director, Medical Affairs and Quality

Other Stakeholders

Family Practice & GPO

Indigenous Cancer Control

Nursing Community of Practice (NCoP)

Patient and Family Experience team

Provincial Pharmacy & Pathology

Radiation Therapists

Surgical Oncology Network

Appendix

1. <http://www.bccancer.bc.ca/books/Documents/Clinical%20Care%20Pathways/Patient%20Conference%20Order.pdf>
2. <http://www.bccancer.bc.ca/health-professionals-site/Documents/Patient-Referral-Form.pdf>
3. <https://www.leukemiabmtprogram.org/about-us/facilities-clinics/outpatient-daycare-unit/#when-to-call>
4. <http://cancergeneticslab.ca/hematological/cml/qrtPCR/>
5. <https://cancergeneticslab.ca/requisitions/>
6. <http://www.bccancer.bc.ca/health-professionals/clinical-resources/chemotherapy-protocols/leukemia-bone-marrow-transplant>
7. <http://www.bccancer.bc.ca/systemic-therapy-site/Documents/Policy%20and%20Forms/Patient%20assistance%20programs.pdf>
8. <https://www.nature.com/articles/s41375-020-0776-2#Sec8>
9. https://www.nccn.org/professionals/physician_gls/pdf/cml.pdf
10. <https://www.nature.com/articles/s41375-020-0776-2>
11. <http://cancergeneticslab.ca/hematological/cml/kd/>
12. <https://www.leukemiabmtprogram.org/>
13. <https://pubmed.ncbi.nlm.nih.gov/22740453/>
14. <https://mds-risk-model.com/>
15. <https://www.nccn.org/guidelines/guidelines-detail?category=1&id=1446>
16. <https://www.bccrc.ca/dept/cid/clinical-trials>
17. <https://pubmed.ncbi.nlm.nih.gov/22740453/>
18. <https://www.providencehealthcare.org/en/clinics/hemosiderosis-program>
19. <https://www.mdsironroad.org/>
20. <https://legacy.mdsclclearpath.org/ClearPath.aspx>
21. <https://editbccca.phsa.ca/books/Documents/Clinical%20Care%20Pathways/APO%20ASSIST%20ELT.pdf>
22. <https://www.nccn.org/guidelines/guidelines-detail?category=1&id=1477>
23. https://www.nccn.org/professionals/physician_gls/pdf/mpn.pdf
24. <http://www.bccancer.bc.ca/health-professionals/clinical-resources/smoking-cessation-program>
25. http://www.bccancer.bc.ca/nutrition-site/Documents/Patient%20Education/Managing_Diabetes_During_Cancer_Treatment.pdf
26. <http://www.bccancer.bc.ca/health-info/coping-with-cancer/nutrition-support>
27. <http://www.bccancer.bc.ca/health-info/coping-with-cancer>
28. <http://www.bccancer.bc.ca/health-professionals/clinical-resources/chemotherapy-protocols/leukemia-bone-marrow-transplant#Leukemia>
29. http://www.bccancer.bc.ca/chemotherapy-protocols-site/Documents/Leukemia-BMT/LKCMLA_Protocol.pdf
30. <http://www.bccancer.bc.ca/our-services/services/supportive-care>
31. <http://www.bccancer.bc.ca/our-services/services/support-programs>
32. <http://www.bccancer.bc.ca/our-services/centres-clinics/bc-cancer-vancouver/epicc>
33. https://www2.gov.bc.ca/assets/gov/health/practitioner-pro/bc-guidelines/palliative1_appendix_a.pdf
34. <https://www.bc-cpc.ca/publications/symptom-management-guidelines/>

Appendix

35. <https://www2.gov.bc.ca/gov/content/health/practitioner-professional-resources/bc-guidelines/palliative-care>
36. <https://www2.gov.bc.ca/gov/content/health/practitioner-professional-resources/pharmacare/prescribers/plan-p-bc-palliative-care-benefits-program>
37. <http://www.bccancer.bc.ca/our-services/services/indigenous-cancer-control>
38. <http://www.bccancer.bc.ca/new-patients-site/Documents/SeriousIllnessConversationGuideCard.pdf>
39. <http://www.phsa.ca/health-info/medical-assistance-in-dying>
40. <http://www.bccancer.bc.ca/managing-symptoms-site/Documents/PSMPC-Referral-Form-for-All-BC-Cancer-Centres.pdf>
41. <http://www.bccancer.bc.ca/our-services/services/supportive-care/pain-symptom-management#What--we--do>
42. https://vancouver.pathwaysbc.ca/service_categories/24
43. <http://www.bccancer.bc.ca/new-patients-site/Documents/Goals%20of%20Care%20Orders%20Form%20June%202018%20Final.pdf>
44. <https://www2.gov.bc.ca/assets/gov/people/seniors/health-safety/pdf/myvoice-advancecareplanningguide.pdf>
45. <https://www2.gov.bc.ca/gov/content/family-social-supports/seniors/health-safety/advance-care-planning>
46. <http://www.bccancer.bc.ca/managing-symptoms-site/Documents/When-Life-Nearing-its-End.pdf>
47. <http://www.bccancer.bc.ca/new-patients-site/Documents/ACP-tips-for-oncology-professionals.pdf>
48. <https://cap.phsa.ca/>
49. <http://www.phsa.ca/aboriginal-health-site/Documents/IPN%20Fillable%20Referral%20Form.pdf>
50. <http://www.bccancer.bc.ca/prevent/alcohol/reduce-your-risk>
51. <http://www.bccancer.bc.ca/health-professionals/clinical-resources/pharmacy#Contact--info>
52. <https://www.uptodate.com/contents/image?imageKey=HEME%2F72901>
53. <https://www.olivefertility.com/referring-physicians>
54. <https://www.pacificfertility.ca/physician-resources>
55. <http://www.bccancer.bc.ca/health-info/coping-with-cancer/managing-symptoms-side-effects/sexual-health>
56. <http://www.bccancer.bc.ca/new-patients-site/Documents/ACP-goals-of-care-orders.pdf>
57. <https://www.ncbi.nlm.nih.gov/pmc/articles/PMC4979120/>
58. http://www.bccancer.bc.ca/new-patients-site/Documents/MIPPC_Referral_Form.pdf
59. <https://www2.gov.bc.ca/gov/content/health/practitioner-professional-resources/bc-guidelines/guidelines-by-alphabetical-listing#P>
60. https://www.virtualhospice.ca/en_US/Main+Site+Navigation/Home.aspx
61. <http://www.bccancer.bc.ca/books/Documents/Clinical%20Care%20Pathways/Revised%20PSMPC%20Questionnaire%20Pink%20Form%202020-21.pdf>
62. <http://www.bcchildrens.ca/health-professionals/refer-a-patient/oncology-referral>
63. <http://www.phsa.ca/health-professionals/professional-resources/language-services/translation>