

This figure represents a general pathway of care that most people with cancer will experience. It shows

- The major phases of a cancer journey
- How a person might progress through each phase
- Key supportive services that are available throughout each person's cancer journey

Please visit the [Clinical Pathways Web](#) page for

- Tumour Group Clinical Pathways
- Patient Companion Guide
- Methodology Reports

Target Population

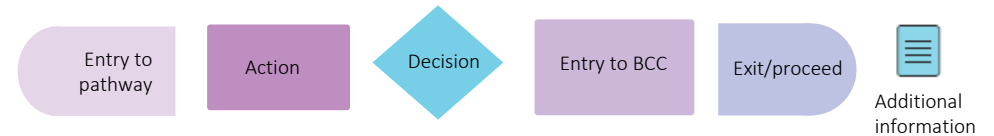
The target population for this pathway include health care providers such as primary care practitioners, oncologists, specialists, nurses, and other members of a health care team including allied health providers. Healthcare administrators across BC Cancer and the health authorities may also benefit from this resource for systems and operational planning.

Pathway Disclaimer

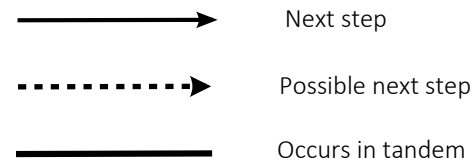
This pathway is an informational resource, intended to provide a high-level overview of the treatment journey a patient in British Columbia may receive. This pathway is not a substitute for medical advice and clinical judgment is still required as not all care trajectories will follow the proposed steps outlined in the pathway. This resource may not reflect all available evidence as research continues to evolve rapidly and BC Cancer is not responsible for any incomplete information. Furthermore, BC Cancer and those involved in developing this pathway are not liable for any incidental or consequential outcomes related to the information in this pathway. Anyone using the information provided in this pathway does so at their own risk.

Pathway Map Legend

Shape Guide



Line Guide



Pathway Map Considerations

This pathway is intended as a high-level resource and therefore does not include specific recommendations on specific systemic therapy protocols or radiation therapy doses. Instead, additional information can be sought via the inserted hyperlinks to resources that may aid a clinician in their treatment planning. The level of detail for each pathway was guided by the tumor group lead and intentionally kept high-level and represents the overall ideal pathway of care for a patient in general. Each patient will have individual needs and each cancer centre may have variation in the way care is delivered, but overall the intent was to represent the pathway that the majority of patients will follow.

General Resources

Indigenous Patient Navigator Referral Form(1): <http://www.phsa.ca/aboriginal-health-site/Documents/IPN%20Fillable%20Referral%20Form.pdf>
Supportive Care(2): <http://www.bccancer.bc.ca/our-services/services/supportive-care>
Compassionate Access Program(CAP) (3): <https://cap.phsa.ca/>
GastrointestinalChemotherapy Protocols(4): <http://www.bccancer.bc.ca/health-professionals/clinical-resources/chemotherapy-protocols/gastrointestinal#Esophagus>
Manufacturer Patient Assistance Programs(5): <http://www.bccancer.bc.ca/systemic-therapy-site/Documents/Policy%20and%20Forms/Patient%20assistance%20programs.pdf>
BC Cancer Research Clinical Trials(6): <https://www.bccrc.ca/dept/cid/clinical-trials>
Smoking Cessation Program(7): <http://www.bccancer.bc.ca/health-professionals/clinical-resources/smoking-cessation-program>
Alcohol Reduction(8): <http://www.bccancer.bc.ca/prevent/alcohol/reduce-your-risk>
MDC Referral Form(9): <http://www.bccancer.bc.ca/books/Documents/Clinical%20Care%20Pathways/Patient%20Conference%20Order.pdf>
Pharmacy Contact Info(10): <http://www.bccancer.bc.ca/health-professionals/clinical-resources/pharmacy#Contact--info>
Pediatric Oncology Hematology Network Referral Form(11): <http://www.bcchildrens.ca/health-professionals/refer-a-patient/oncology-referral>
Language & Translation Services(53): <http://www.phsa.ca/health-professionals/professional-resources/language-services/translation>
BC Cancer Library(54): <http://www.bccancer.bc.ca/our-services/services/library>

Abbreviations

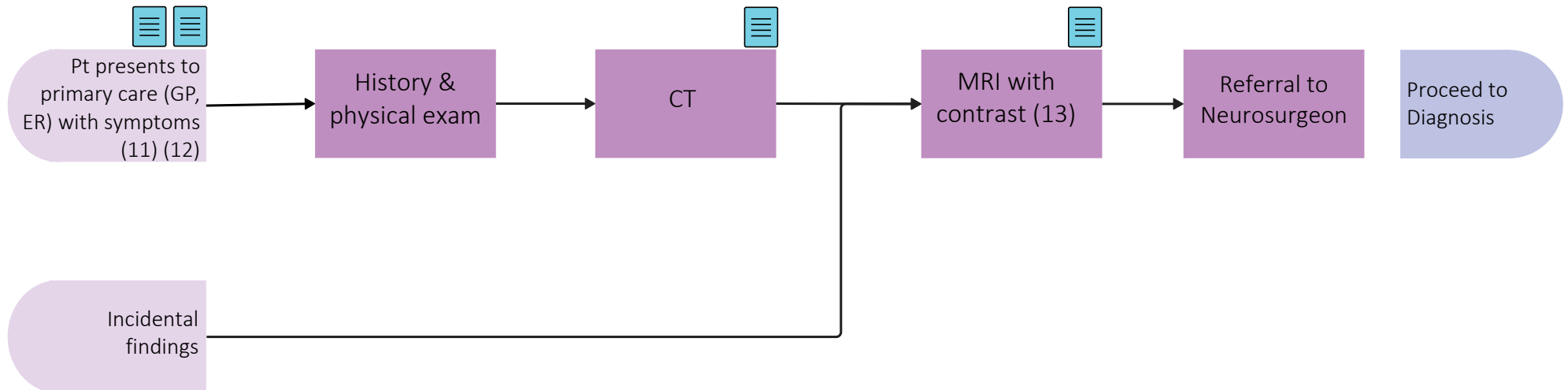
IDH: Isocitrate Dehydrogenase
KPS: Karnofsky Performance Scale
MDC: Multidisciplinary Conference/Discussion
MRP: Most Responsible Provider
PCP: Primary Care Provider
PFC: Patient & Family Counseling
PSMPC: Pain & Symptom Management & Palliative Care
RT: Radiation Therapy
ST: Systemic Therapy

Additional Information

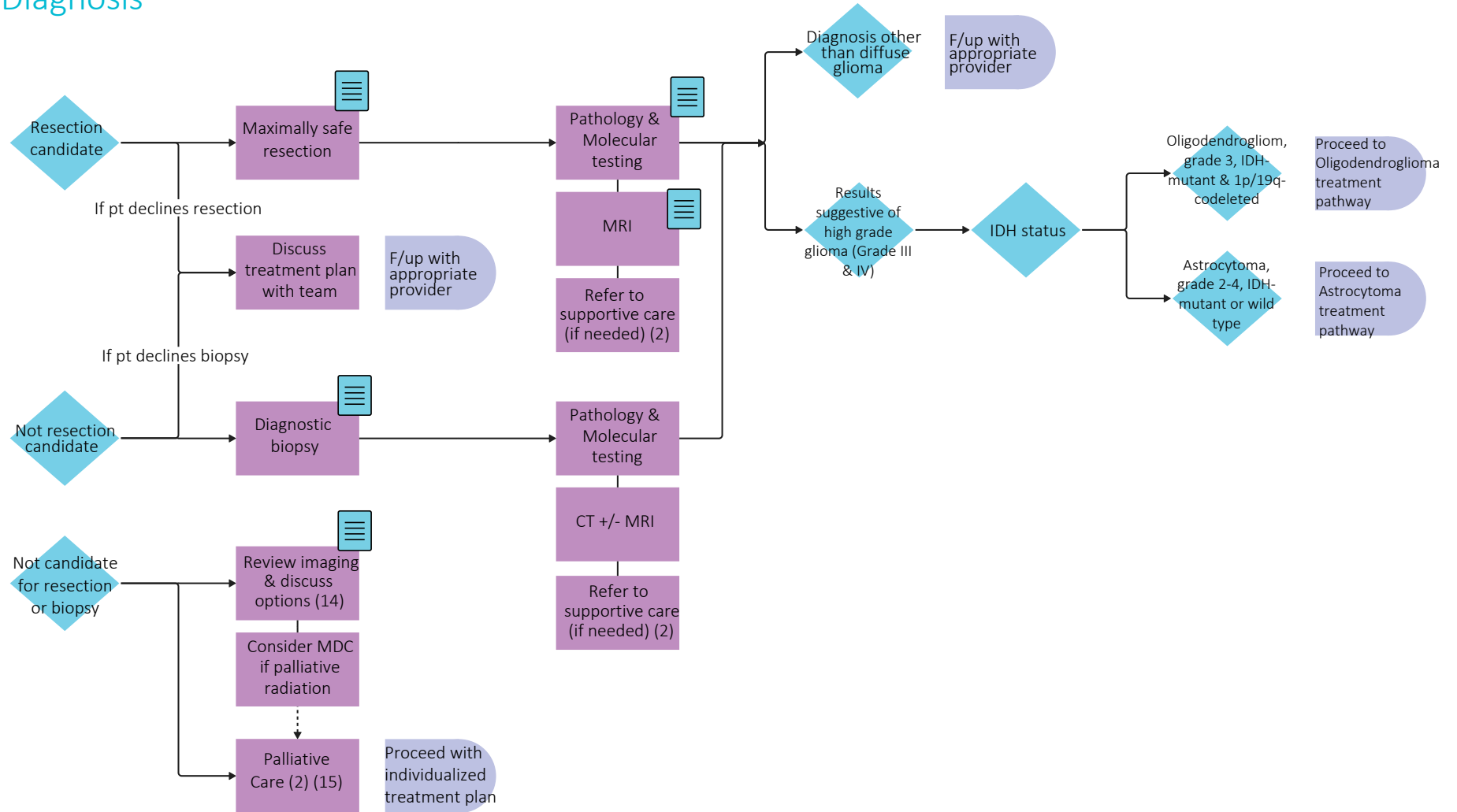
To learn more about how the Clinical Care Pathways are developed, visit the [Methodology Report](#).

Other Tumour Group Clinical Care Pathways can be found on the [BC Cancer Website](#).

Pre-Diagnosis



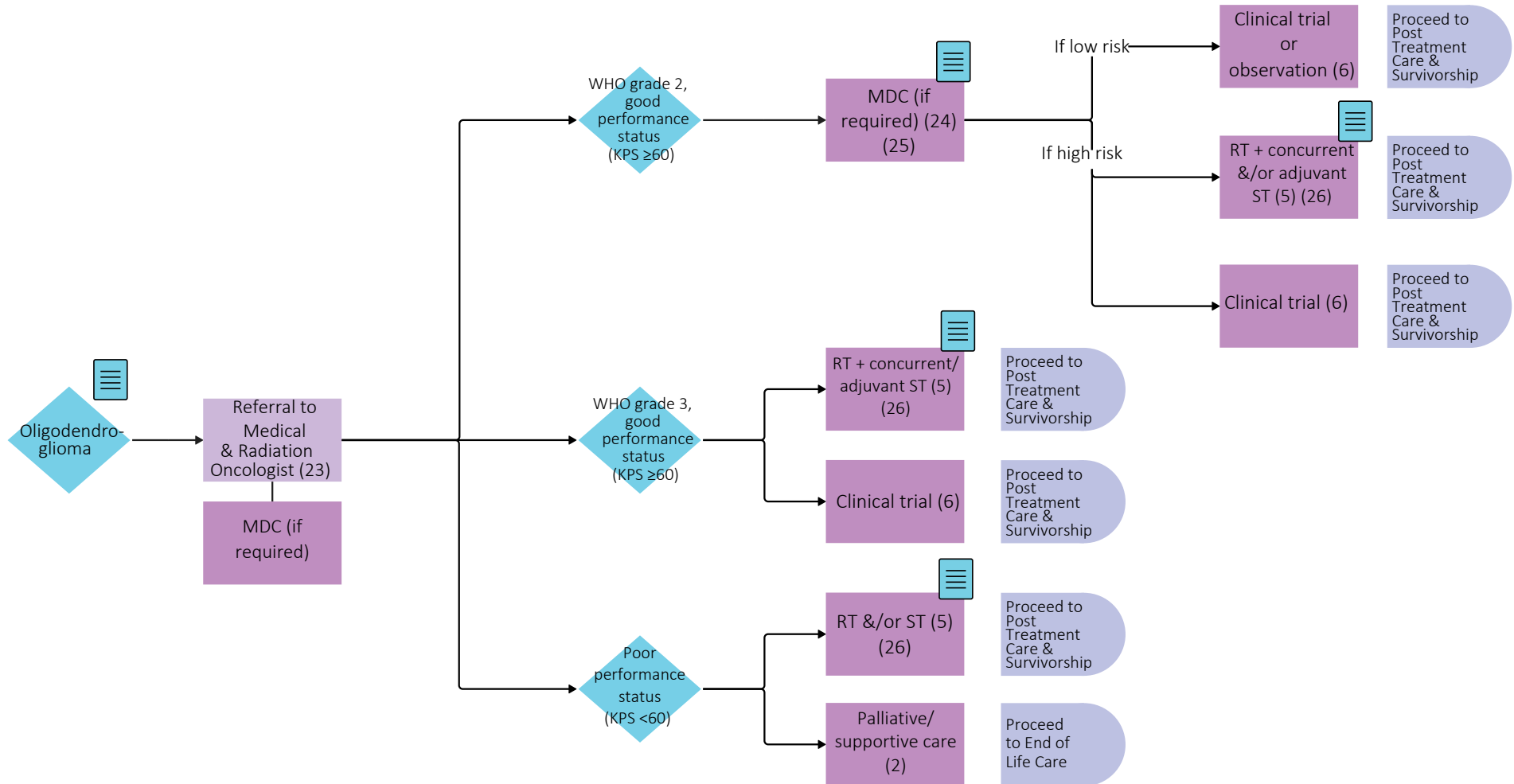
Diagnosis



Throughout treatment, consider...

Regular symptom & performance status assessment (16); Supportive care (2, 17); Sexual & reproductive health (18, 19, 20); Co-morbidity management & medication review; Risk factor mitigation; Clinical trials (where applicable) (6); Goals of care (22); Cultural safety (1); Involvement of PCP

Treatment - Oligodendroglioma

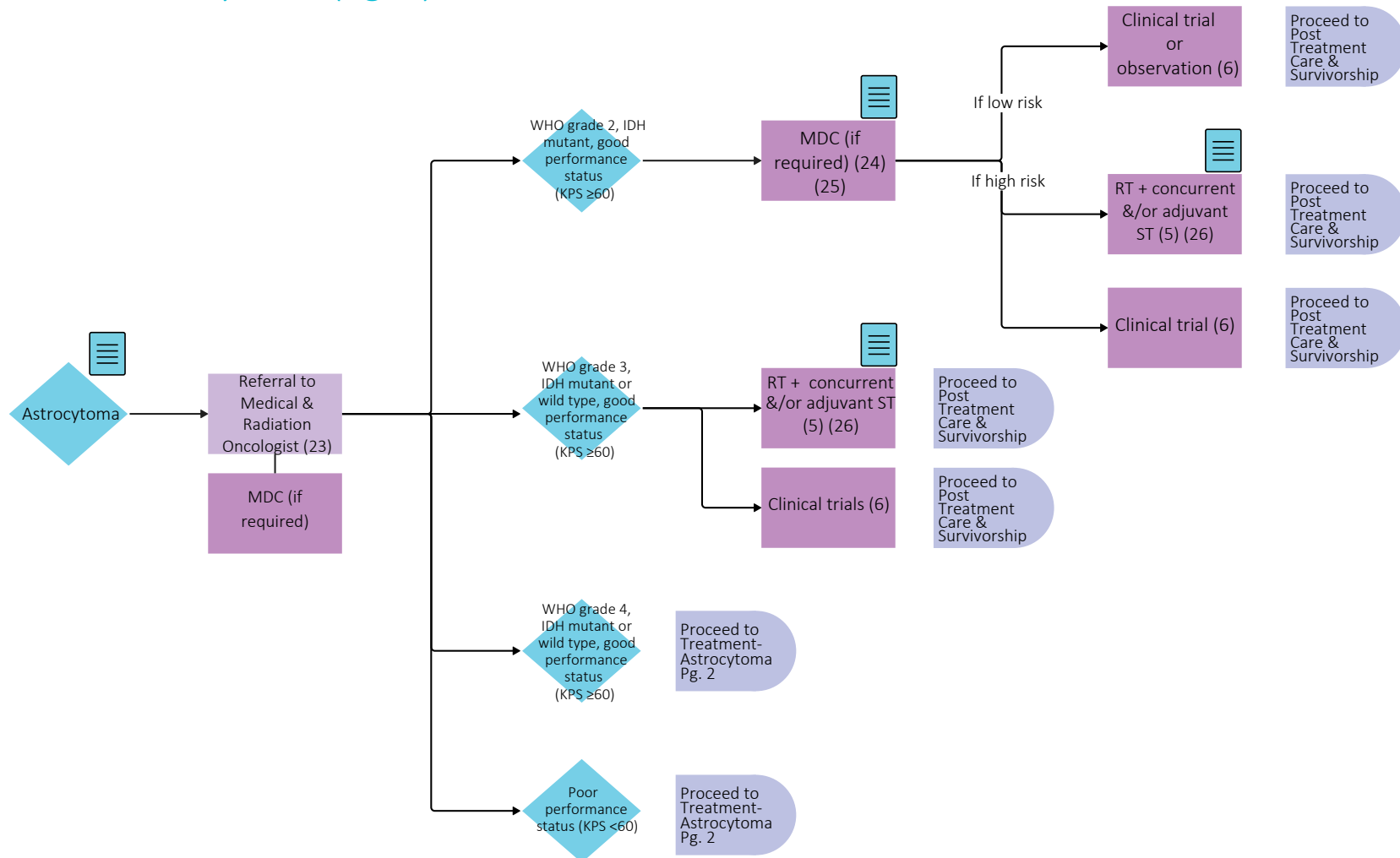


Throughout treatment, consider...



Regular symptom & performance status assessment (16); Supportive care (2, 17); Sexual & reproductive health (18, 19, 20); Co-morbidity management & medication review; Risk factor mitigation; Clinical trials (where applicable) (6); Goals of care (22); Cultural safety (1); Involvement of PCP

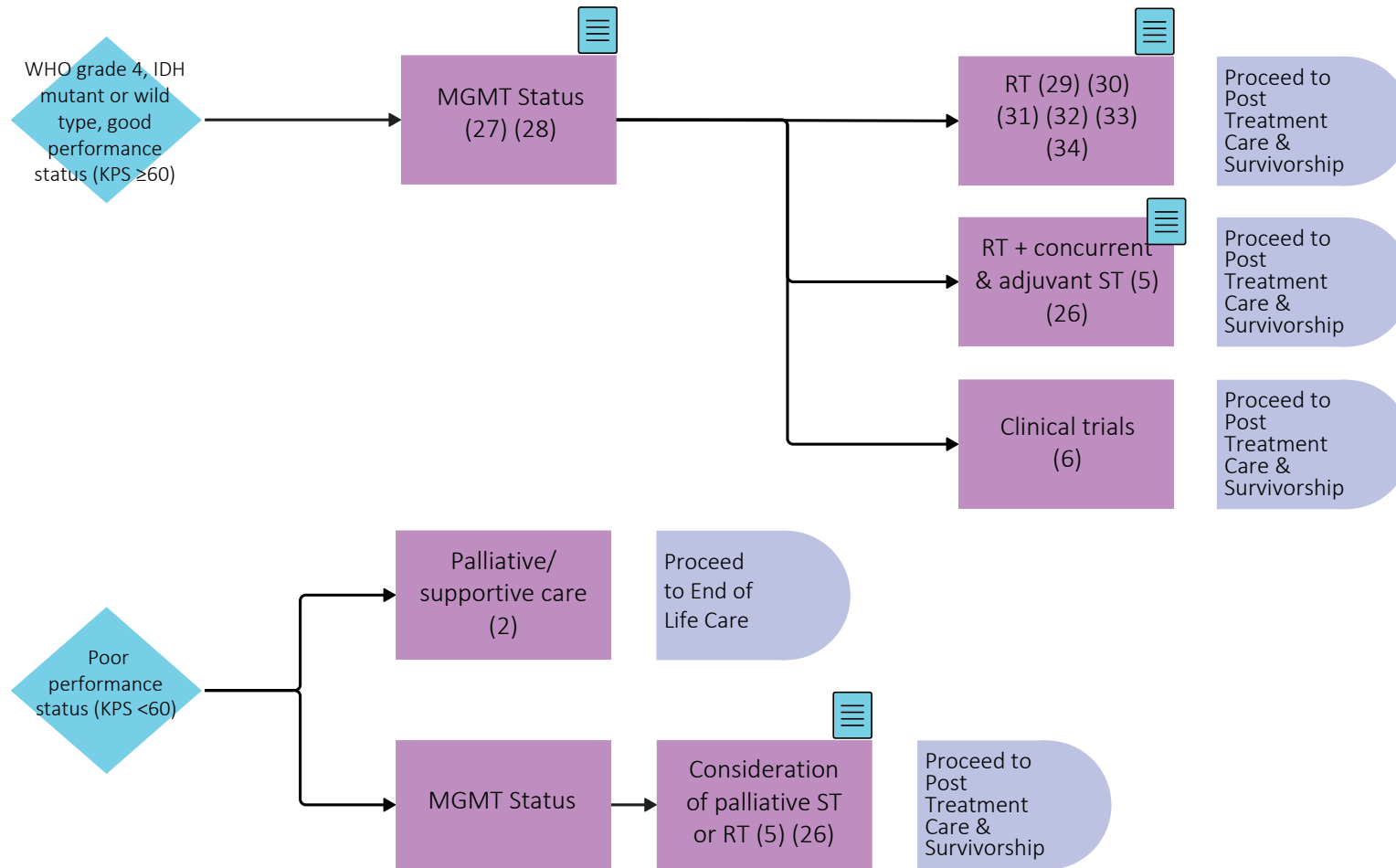
Treatment - Astrocytoma (Pg. 1)



Throughout treatment, consider...

Regular symptom & performance status assessment (16); Supportive care (2, 17); Sexual & reproductive health (18, 19, 20); Co-morbidity management & medication review; Risk factor mitigation; Clinical trials (where applicable) (6); Goals of care (22); Cultural safety (1); Involvement of PCP

Treatment - Astrocytoma (Pg. 2)



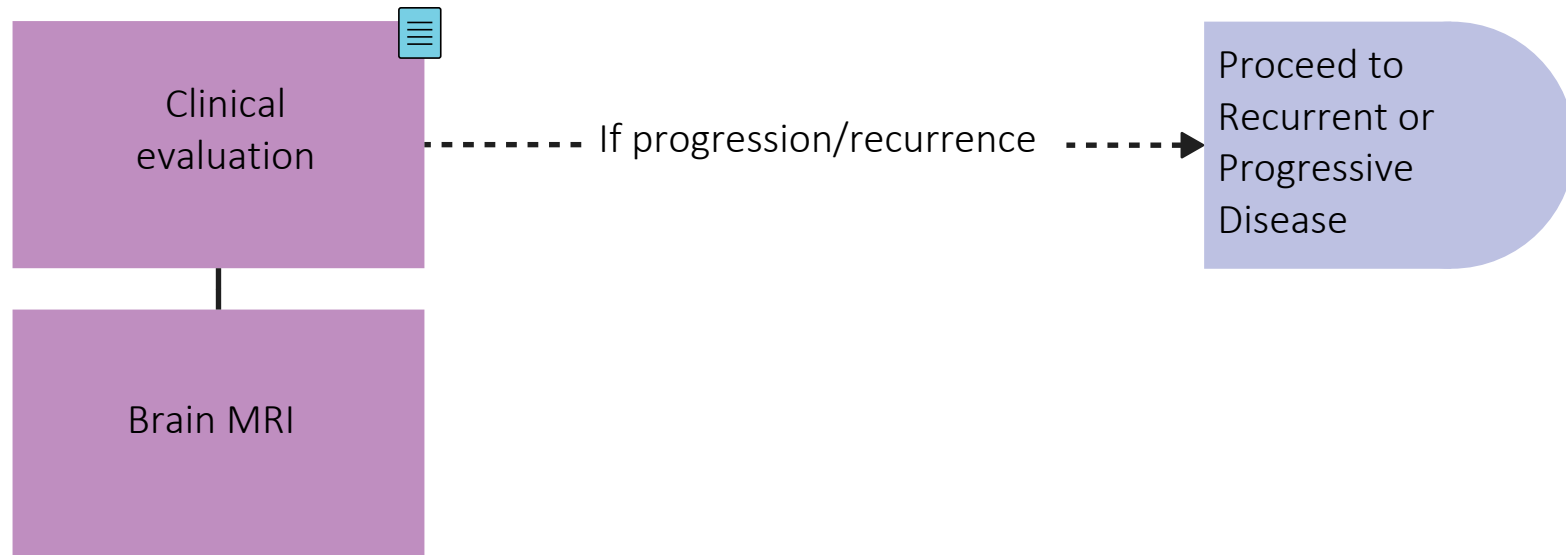
Throughout treatment, consider...



Regular symptom & performance status assessment (16); Supportive care (2, 17); Sexual & reproductive health (18, 19, 20); Co-morbidity management & medication review; Risk factor mitigation; Clinical trials (where applicable) (6); Goals of care (22); Cultural safety (1); Involvement of PCP

Post Treatment Care & Survivorship

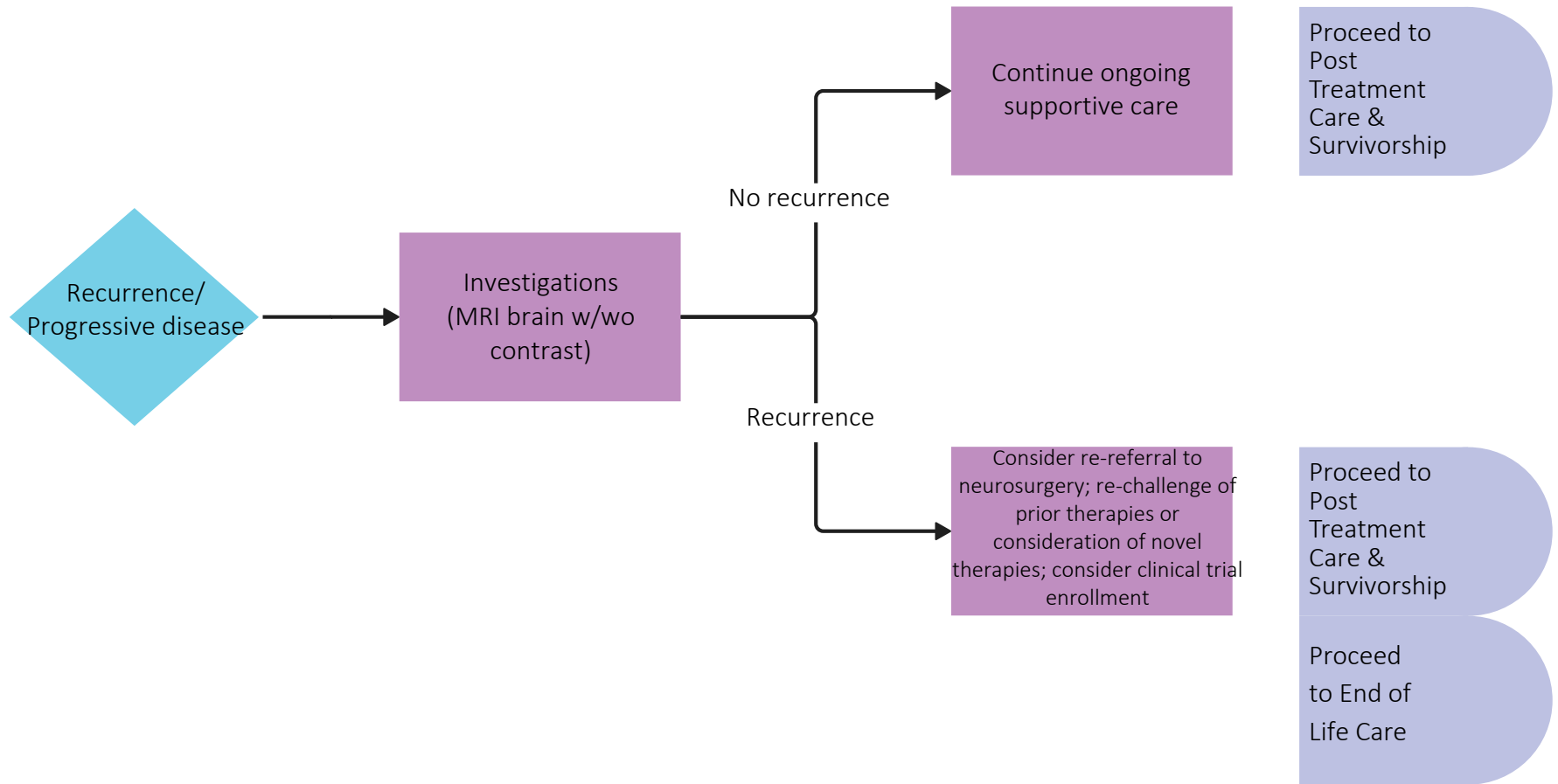
F/up every 3–6 months for 5 yrs then annually or as clinically indicated.



Throughout treatment, consider...

Regular symptom & performance status assessment (16); Supportive care (2, 17); Sexual & reproductive health (18, 19, 20); Co-morbidity management & medication review; Risk factor mitigation; Clinical trials (where applicable) (6); Goals of care (22); Cultural safety (1); Involvement of PCP

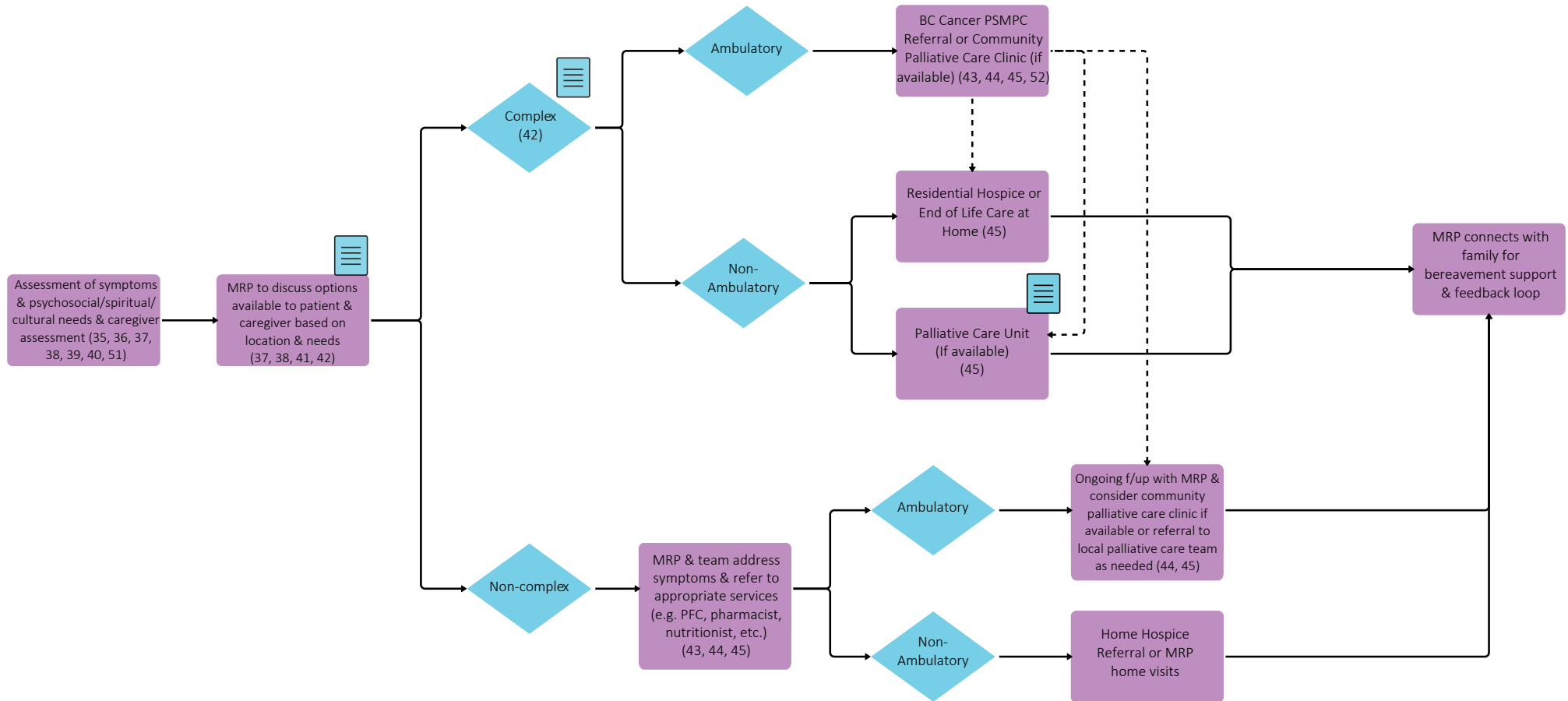
Recurrent or Progressive Disease



Throughout treatment, consider...

Regular symptom & performance status assessment (16); Supportive care (2, 17); Sexual & reproductive health (18, 19, 20); Co-morbidity management & medication review; Risk factor mitigation; Clinical trials (where applicable) (6); Goals of care (22); Cultural safety (1); Involvement of PCP

End of Life Care



Throughout treatment, consider...

Goals of Care Discussions & Consideration of Cultural Safety (1, 41, 42, 46, 47, 48, 49, 50)

Subject Matter Expert Working Group & COIs

Rebecca Harrison, Project Lead, Medical Oncologist
EMD Serono, Pfizer, Servier Canada

Manik Chahal, Medical Oncologist
Novocure

Stephen Hentschel, Neurosurgeon
No disclosures

Andrew Sak Yu Lee, Neurosurgeon
Medexus

Serge Makarenko, Neurosurgeon
Medexus

Monty Martin, Radiologist
COI pending

John Paul McGhie, Medical Oncologist
Astra-Zeneca, Novartis, Merck, Amgen

Daniel Mendelsohn, Neurosurgeon
No disclosures

Justin Owen, Radiation Oncologist
No disclosures

Waseem Sharieff, Radiation Oncologist
No disclosures

Stephen Yip, Pathologist
Amgen, AstraZeneca, Bayer, Janssen, Roche, Servier, CIHR, AOSpine, CCS, TFRI, Lung Cancer Canada, NFRF, Genome Canada GAPP, North American Spine Society

Pathway Program Team

Yashpal Bhatia, Tumour Group Coordinator, Provincial Programs
Tammy Currie, Executive Director, Provincial Programs
Amilya Ladak, Policy Analyst, Tumour Groups
James Loudon, Director, Provincial Programs
Shaifa Nanji, Manager, Tumour Groups
Christine Simmons, Tumour Group Council Chair
Elaine Wai, Senior Executive Director, Medical Affairs and Quality

Other Stakeholders

Family Practice & GPO
Indigenous Cancer Control
Nursing Community of Practice (NCoP)
Patient and Family Experience Team & Supportive Care
Radiation Therapists
Surgical Oncology Network
Provincial Pharmacy, Pathology & Medical Imaging Teams

Appendix

1. <http://www.phsa.ca/aboriginal-health-site/Documents/IPN%20Fillable%20Referral%20Form.pdf>
2. <http://www.bccancer.bc.ca/our-services/services/supportive-care>
3. <https://cap.phsa.ca/>
4. <http://www.bccancer.bc.ca/health-professionals/clinical-resources/chemotherapy-protocols/gastrointestinal#Esophagus>
5. <http://www.bccancer.bc.ca/systemic-therapy-site/Documents/Policy%20and%20Forms/Patient%20assistance%20programs.pdf>
6. <https://www.bccrc.ca/dept/cid/clinical-trials>
7. <http://www.bccancer.bc.ca/health-professionals/clinical-resources/smoking-cessation-program>
8. <http://www.bccancer.bc.ca/prevent/alcohol/reduce-your-risk>
9. <http://www.bccancer.bc.ca/books/Documents/Clinical%20Care%20Pathways/Patient%20Conference%20Order.pdf>
10. <http://www.bccancer.bc.ca/health-professionals/clinical-resources/pharmacy#Contact-info>
11. <http://www.bcchildrens.ca/health-professionals/refer-a-patient/oncology-referral>
12. <https://www.uptodate.com/contents/high-grade-glioma-in-adults-beyond-the-basics>
13. <https://www.ncbi.nlm.nih.gov/pmc/articles/PMC7904519/>
14. <https://www.nature.com/articles/s41571-020-00447-z>
15. <http://www.bccancer.bc.ca/our-services/services/supportive-care/pain-symptom-management>
16. <https://www.uptodate.com/contents/image?imageKey=HEME%2F72901>
17. <http://www.bccancer.bc.ca/our-services/services/support-programs>
18. <https://www.olivefertility.com/referring-physicians>
19. <https://www.pacificfertility.ca/physician-resources>
20. <http://www.bccancer.bc.ca/health-info/coping-with-cancer/managing-symptoms-side-effects/sexual-health>
21. <https://www.cansarcc.ca/>
22. <http://www.bccancer.bc.ca/new-patients-site/Documents/ACP-goals-of-care-orders.pdf>
23. <http://www.bccancer.bc.ca/health-professionals-site/Documents/Patient-Referral-Form.pdf>
24. <https://www.nejm.org/doi/full/10.1056/nejmoa1500925>
25. <https://pubmed.ncbi.nlm.nih.gov/11956268/>
26. <http://www.bccancer.bc.ca/health-professionals/clinical-resources/chemotherapy-protocols/neuro-oncology#Protocols>
27. <https://pubmed.ncbi.nlm.nih.gov/15758010/>
28. <https://www.nejm.org/doi/full/10.1056/NEJMoa1611977>
29. <https://ascopubs.org/doi/10.1200/JCO.2004.06.082>
30. <https://ascopubs.org/doi/10.1200/JCO.2015.62.6606>
31. <https://www.nejm.org/doi/10.1056/NEJMoa1611977>
32. <https://www.sciencedirect.com/science/article/abs/pii/S147020451270164X?via%3Dihub>
33. <https://www.sciencedirect.com/science/article/abs/pii/S1470204512702656?via%3Dihub>
34. https://ascopubs.org/doi/10.1200/jco.2008.26.15_suppl.2006
35. <http://www.bccancer.bc.ca/our-services/centres-clinics/bc-cancer-vancouver/epicc>
36. https://www2.gov.bc.ca/assets/gov/health/practitioner-pro/bc-guidelines/palliative1_appendix_a.pdf
37. <https://www.bc-cpc.ca/publications/symptom-management-guidelines/>
38. <https://www2.gov.bc.ca/gov/content/health/practitioner-professional-resources/bc-guidelines/palliative-care>
39. <https://www2.gov.bc.ca/gov/content/health/practitioner-professional-resources/pharmacare/prescribers/plan-p-bc-palliative-care-benefits-program>
40. <http://www.bccancer.bc.ca/our-services/services/indigenous-cancer-control>

Appendix

- 42. <http://www.phsa.ca/health-info/medical-assistance-in-dying>
- 43. <http://www.bccancer.bc.ca/managing-symptoms-site/Documents/PSMPC-Referral-Form-for-All-BC-Cancer-Centres.pdf>
- 44. <http://www.bccancer.bc.ca/our-services/services/supportive-care/pain-symptom-management#What--we--do>
- 45. https://vancouver.pathwaysbc.ca/service_categories/24
- 46. <http://www.bccancer.bc.ca/new-patients-site/Documents/Goals%20of%20Care%20Orders%20Form%20June%202018%20Final.pdf>
- 47. <https://www2.gov.bc.ca/assets/gov/people/seniors/health-safety/pdf/myvoice-advancecareplanningguide.pdf>
- 48. <https://www2.gov.bc.ca/gov/content/family-social-supports/seniors/health-safety/advance-care-planning>
- 49. <http://www.bccancer.bc.ca/managing-symptoms-site/Documents/When-Life-Nearing-its-End.pdf>
- 50. <http://www.bccancer.bc.ca/new-patients-site/Documents/ACP-tips-for-oncology-professionals.pdf>
- 51. <http://www.bccancer.bc.ca/books/Documents/Clinical%20Care%20Pathways/Revised%20PSMPC%20Questionnaire%20Pink%20Form%202020-21.pdf>
- 52. http://www.bccancer.bc.ca/new-patients-site/Documents/MIPPC_Referral_Form.pdf
- 53. <http://www.phsa.ca/health-professionals/professional-resources/language-services/translation>
- 54. <http://www.bccancer.bc.ca/our-services/services/library>