

This figure represents a general pathway of care that most people with cancer will experience. It shows

- The major phases of a cancer journey
- How a person might progress through each phase
- Key supportive services that are available throughout each person's cancer journey

Please visit the [Clinical Pathways Web](#) page for

- Tumour Group Clinical Pathways
- Patient Companion Guide
- Methodology Reports

Target Population

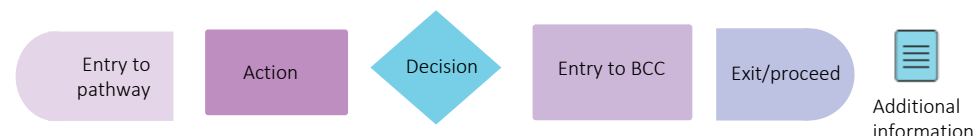
The target population for this pathway include health care providers such as primary care practitioners, oncologists, specialists, nurses, and other members of a health care team including allied health providers. Healthcare administrators across BC Cancer and the health authorities may also benefit from this resource for systems and operational planning.

Pathway Disclaimer

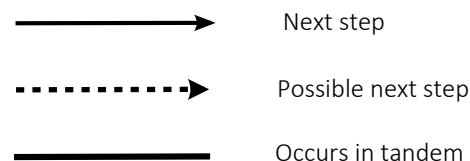
This pathway is an informational resource, intended to provide a high-level overview of the treatment journey a patient in British Columbia may receive. This pathway is not a substitute for medical advice and clinical judgment is still required as not all care trajectories will follow the proposed steps outlined in the pathway. This resource may not reflect all available evidence as research continues to evolve rapidly and BC Cancer is not responsible for any incomplete information. Furthermore, BC Cancer and those involved in developing this pathway are not liable for any incidental or consequential outcomes related to the information in this pathway. Anyone using the information provided in this pathway does so at their own risk.

Pathway Map Legend

Shape Guide



Line Guide



Pathway Map Considerations

This pathway is intended as a high-level resource and therefore does not include specific recommendations on specific systemic therapy protocols or radiation therapy doses. Instead, additional information can be sought via the inserted hyperlinks to resources that may aid a clinician in their treatment planning. The level of detail for each pathway was guided by the tumor group lead and intentionally kept high-level and represents the overall ideal pathway of care for a patient in general. Each patient will have individual needs and each cancer centre may have variation in the way care is delivered, but overall the intent was to represent the pathway that the majority of patients will follow.

General Resources

Indigenous Patient Navigator Referral Form(1): <http://www.phsa.ca/aboriginal-health-site/Documents/IPN%20Fillable%20Referral%20Form.pdf>

Supportive Care(2): <http://www.bccancer.bc.ca/our-services/services/supportive-care>

Compassionate Access Program (CAP) (3): <https://cap.phsa.ca/>

Breast Chemotherapy Protocols(4): <http://www.bccancer.bc.ca/health-professionals/clinical-resources/chemotherapy-protocols/breast>

Manufacturer Patient Assistance Programs(5): <http://www.bccancer.bc.ca/systemic-therapy-site/Documents/Policy%20and%20Forms/Patient%20assistance%20programs.pdf>

BC Cancer Research Clinical Trials(6): <https://www.bccrc.ca/dept/cid/clinical-trials>

Smoking Cessation Program(7): <http://www.bccancer.bc.ca/health-professionals/clinical-resources/smoking-cessation-program>

Alcohol Reduction(8): <http://www.bccancer.bc.ca/prevent/alcohol/reduce-your-risk>

MDC Referral Form(9): <http://www.bccancer.bc.ca/books/Documents/Clinical%20Care%20Pathways/Patient%20Conference%20Order.pdf>

Pharmacy Contact Info(10): <http://www.bccancer.bc.ca/health-professionals/clinical-resources/pharmacy#Contact--info>

Language & Translation Services(46): <http://www.phsa.ca/health-professionals/professional-resources/language-services/translation>

Abbreviations

ADH: Atypical Ductal Hyperplasia

ALH: Atypical Lobular Hyperplasia

CDK: Cyclin-Dependent Kinase

ER: Estrogen Receptor

HER: Human Epidermal Growth Factor Receptor

IO: Immuno-Oncology

LCIS: Lobular Carcinoma In Situ

RT: Radiation Therapy

ST: Systemic Therapy

MBC: Metastatic Breast Cancer

MDC: Multidisciplinary Conference/Discussion

MRP: Most Responsible Provider

PCP: Primary Care Provider

PDL: Programmed Cell Death Ligand

PFC: Patient & Family Counseling

PR: Progesterone Receptor

PSMPC: Pain & Symptom Management & Palliative Care

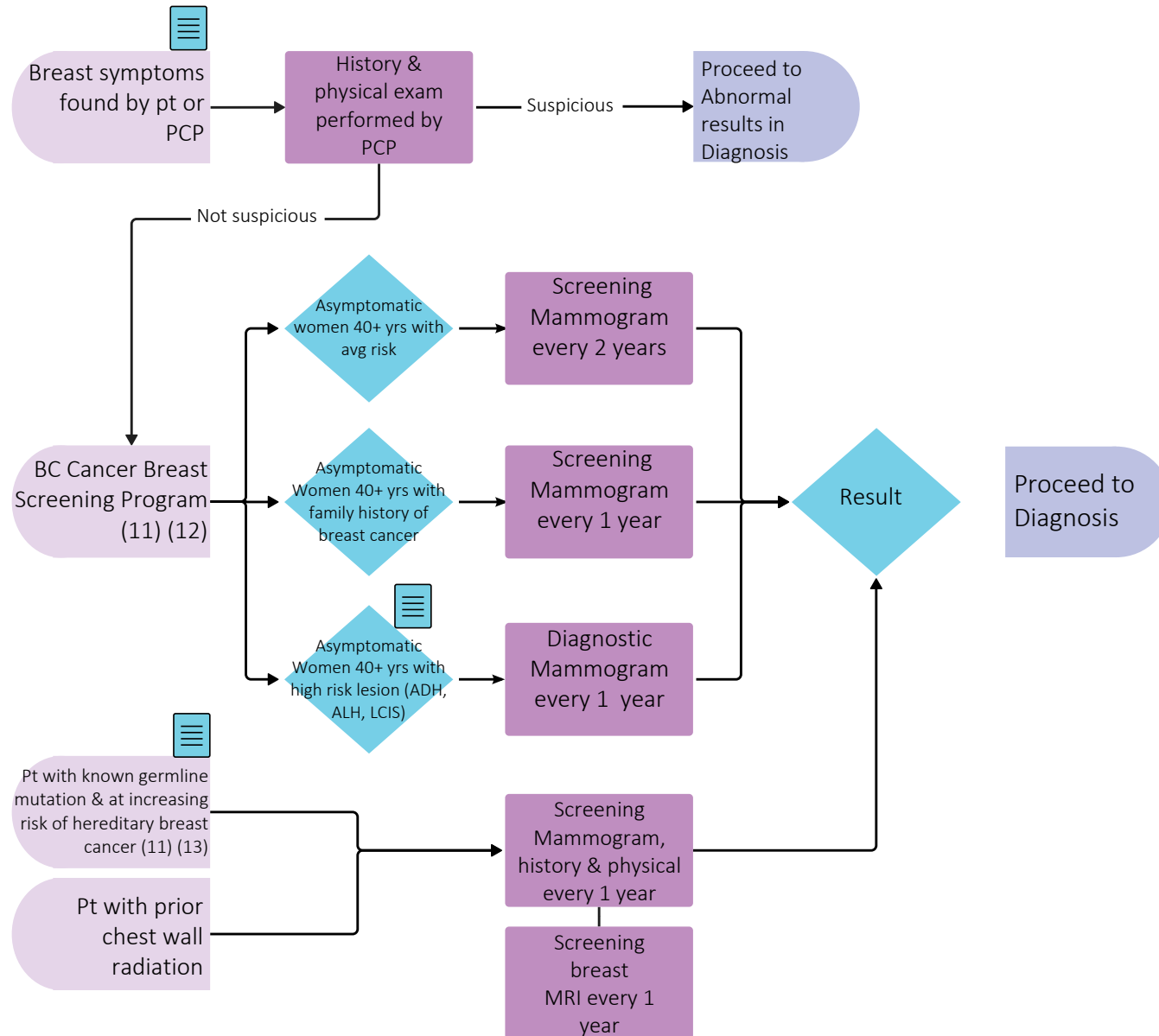
TNBC: Triple Negative Breast Cancer

Additional Information

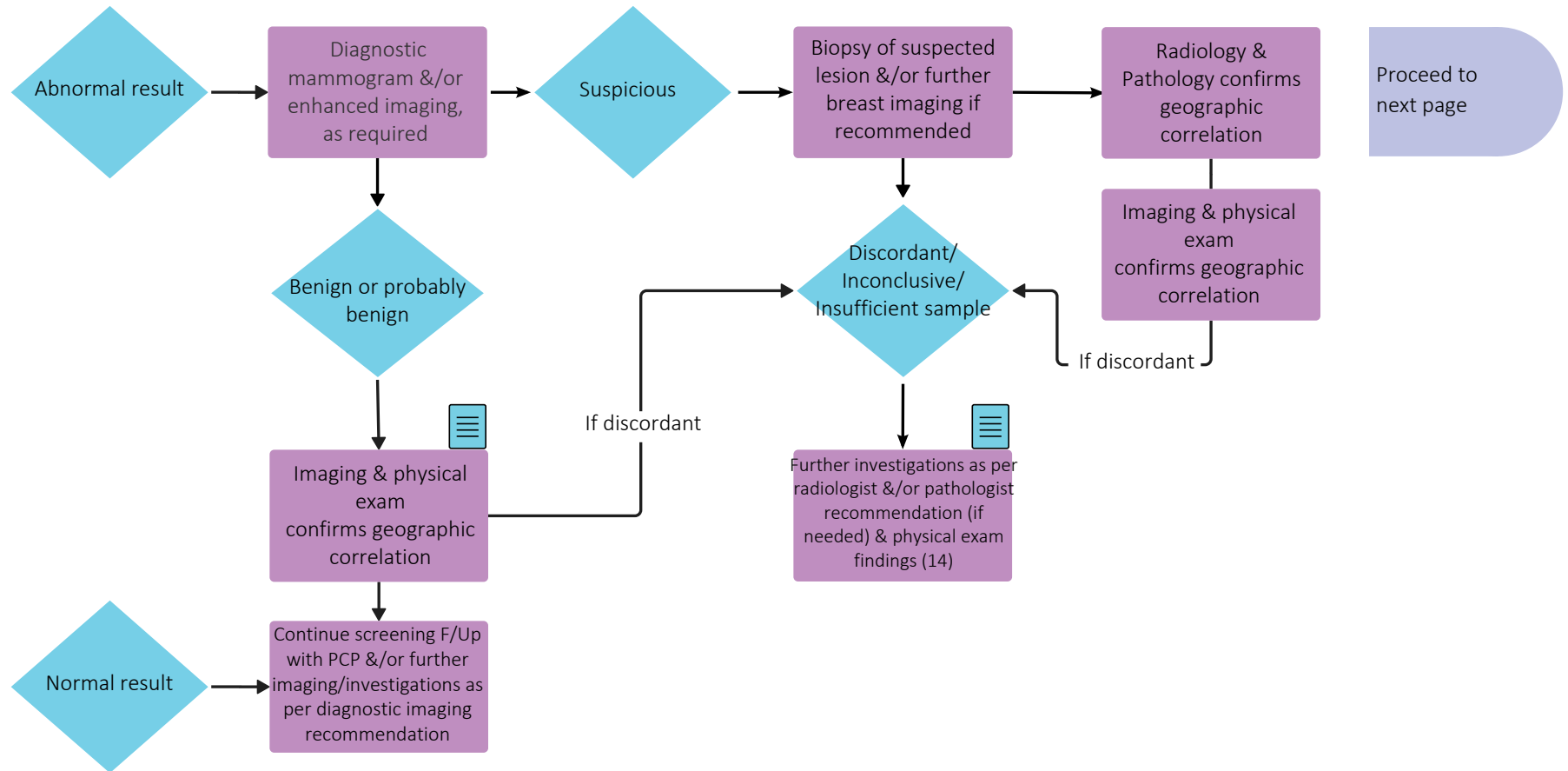
To learn more about how the Clinical Care Pathways are developed, visit the [Methodology Report](#).

Other Tumour Group Clinical Care Pathways can be found on the [BC Cancer Website](#).

Pre-Diagnosis



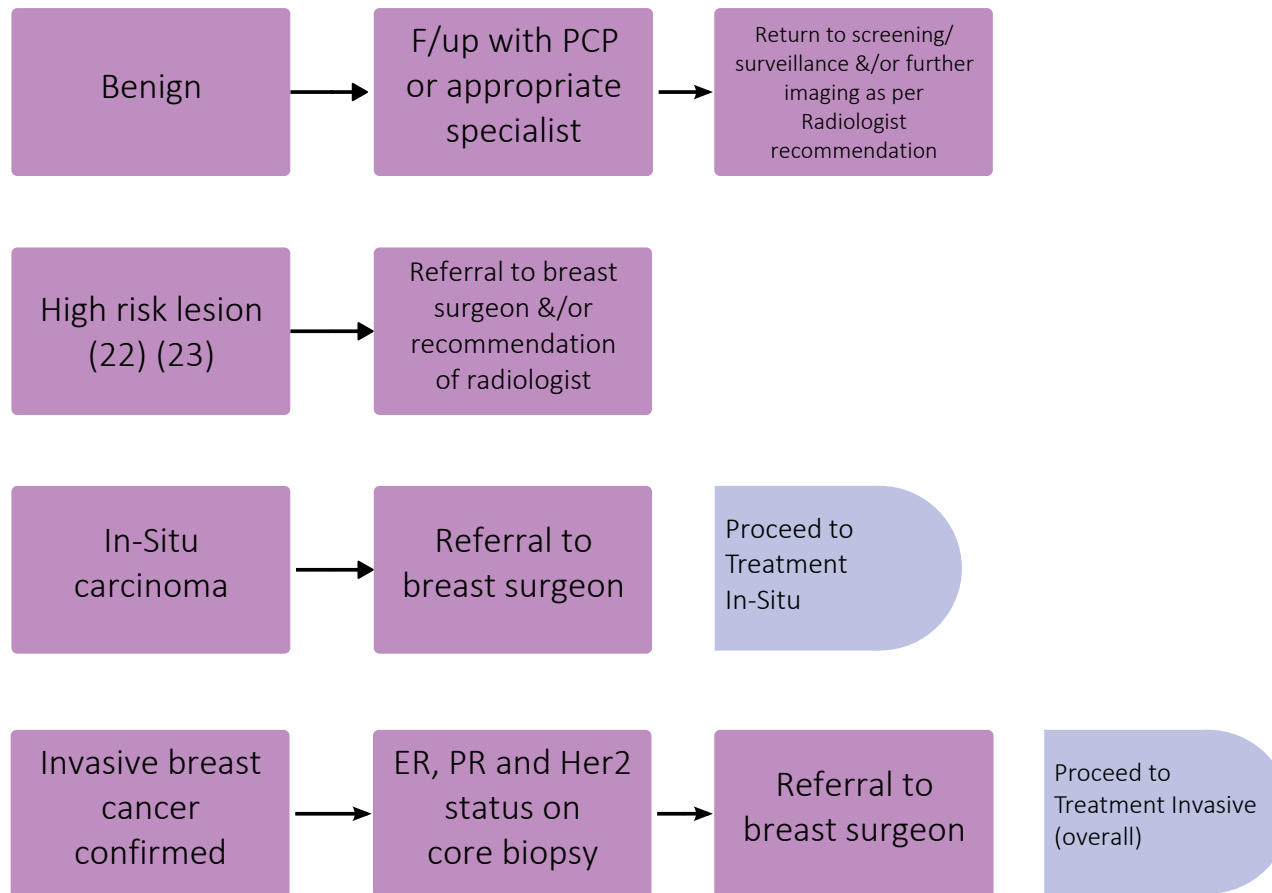
Diagnosis (pg. 1)



Throughout treatment, consider...

Regular symptom & performance status assessment (15); Supportive care (2, 16); Sexual & reproductive health (17, 18, 19); Co-morbidity management & medication review; Risk factor mitigation; Clinical trials (where applicable) (6); Goals of care (20); Cultural safety (1); Involvement of PCP, Consider eligibility for genetic testing based on tumor characteristics, family history and ancestry (21)

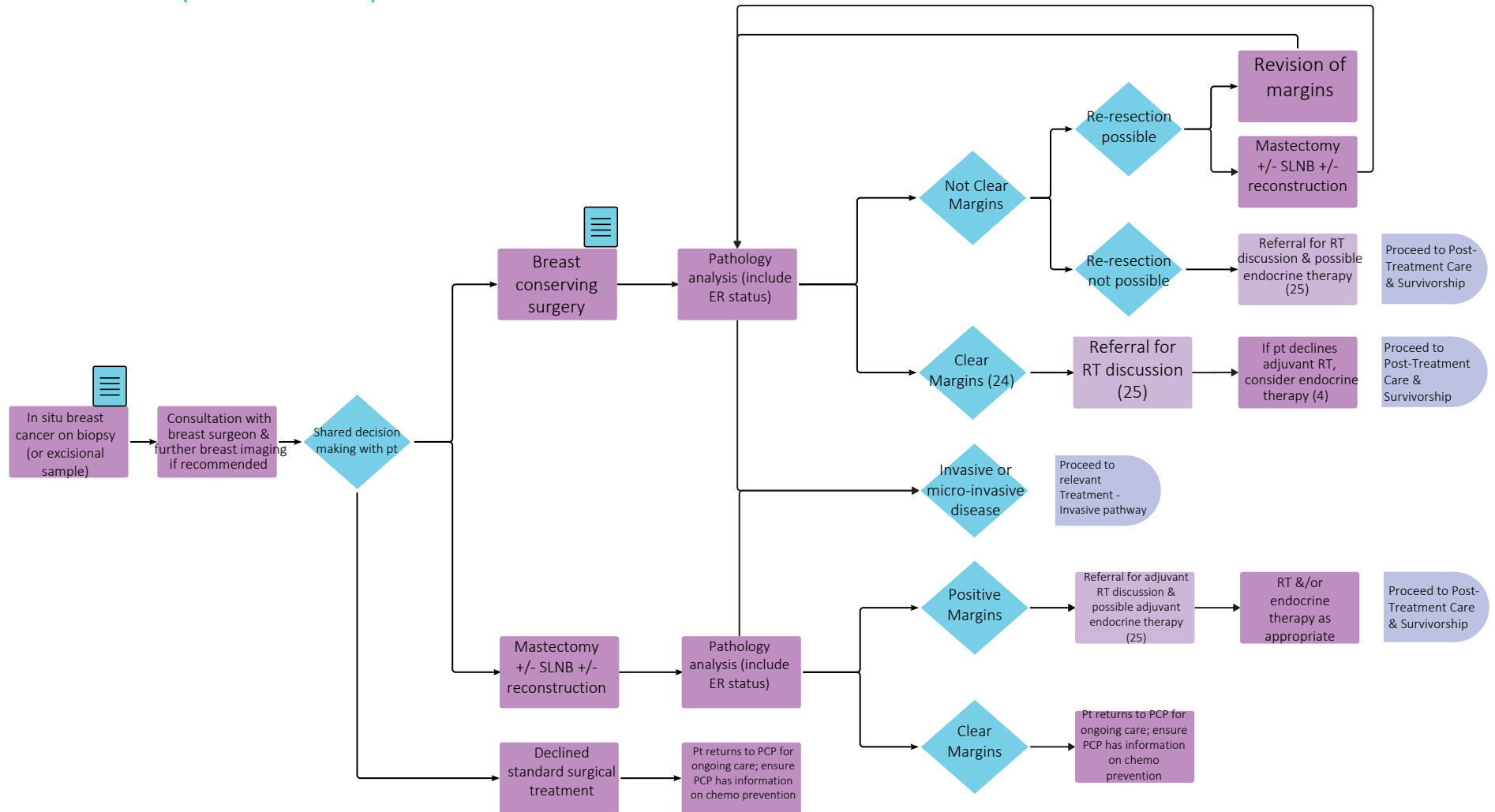
Diagnosis (pg. 2)



Throughout treatment, consider...

Regular symptom & performance status assessment (15); Supportive care (2, 16); Sexual & reproductive health (17, 18, 19); Co-morbidity management & medication review; Risk factor mitigation; Clinical trials (where applicable) (6); Goals of care (20); Cultural safety (1); Involvement of PCP, Consider eligibility for genetic testing based on tumor characteristics, family history and ancestry (21)

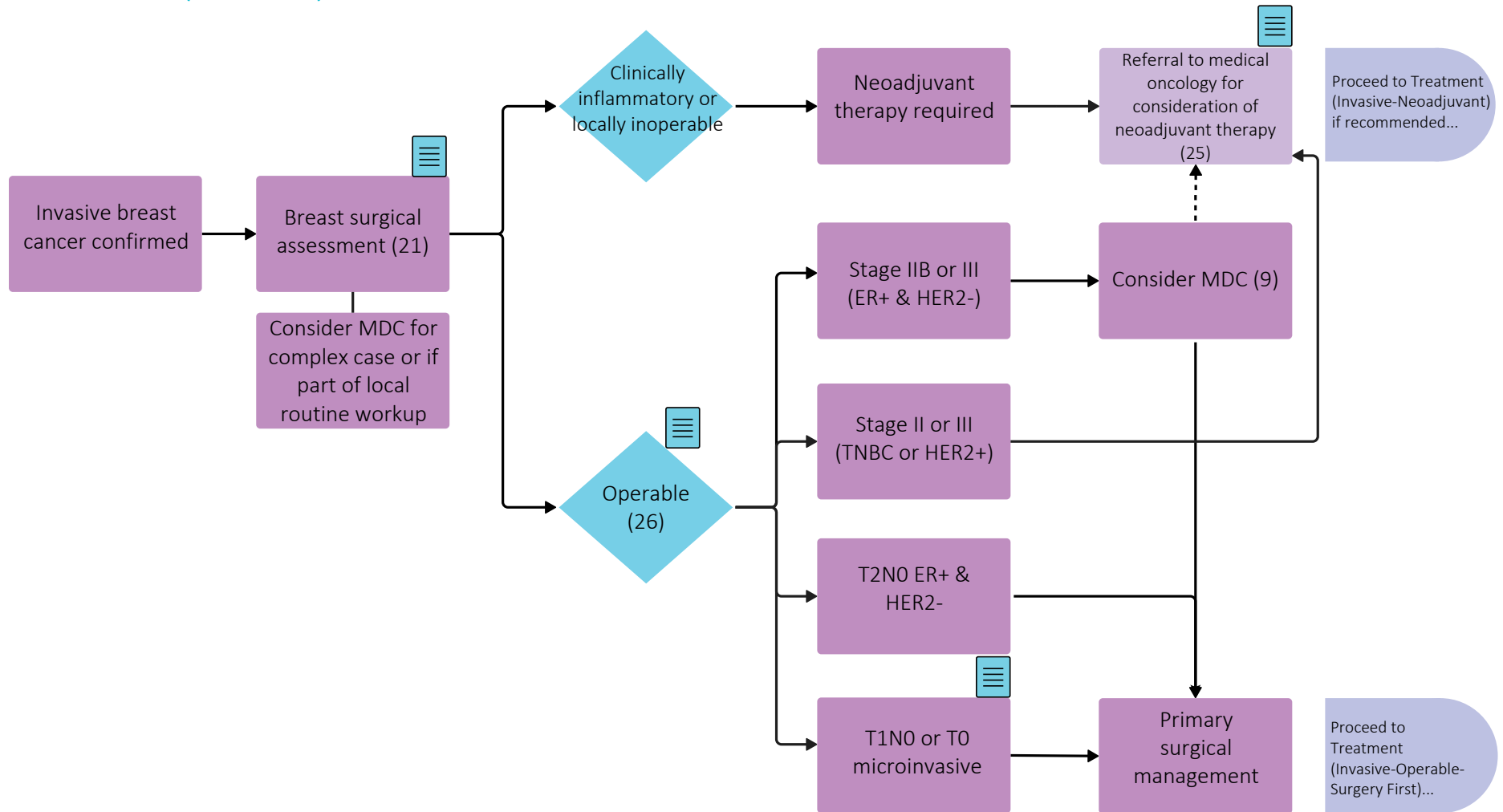
Treatment (In situ: DCIS)



Throughout treatment, consider...

Regular symptom & performance status assessment (15); Supportive care (2, 16); Sexual & reproductive health (17, 18, 19); Co-morbidity management & medication review; Risk factor mitigation; Clinical trials (where applicable) (6); Goals of care (20); Cultural safety (1); Involvement of PCP, Consider eligibility for genetic testing based on tumor characteristics, family history and ancestry (21)

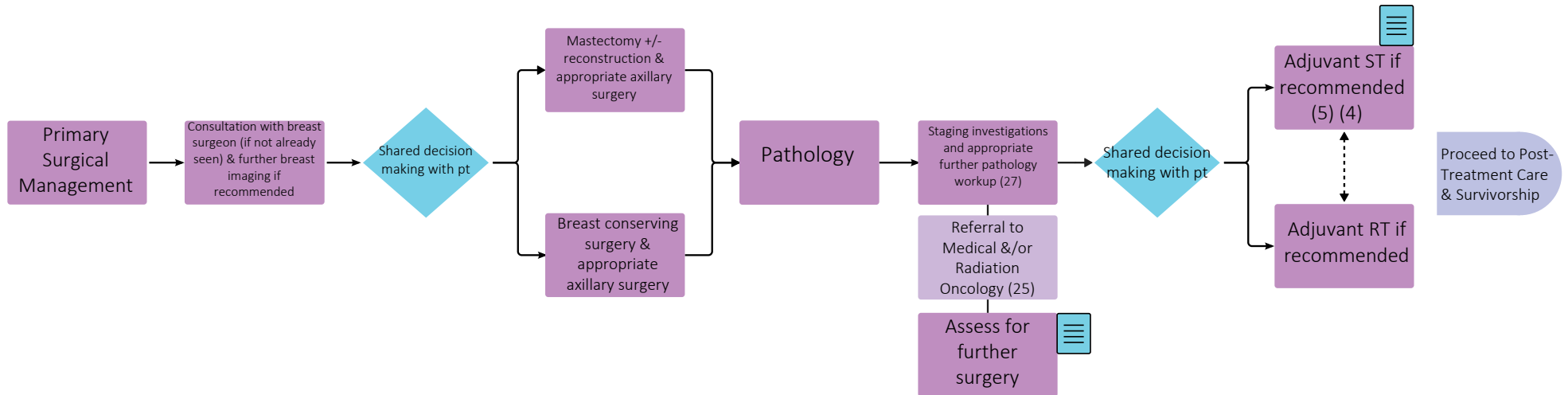
Treatment (Invasive) Overall



Throughout treatment, consider...

Regular symptom & performance status assessment (15); Supportive care (2, 16); Sexual & reproductive health (17, 18, 19); Co-morbidity management & medication review; Risk factor mitigation; Clinical trials (where applicable) (6); Goals of care (20); Cultural safety (1); Involvement of PCP, Consider eligibility for genetic testing based on tumor characteristics, family history and ancestry (21)

Treatment (Invasive-Operable-Upfront Surgery)

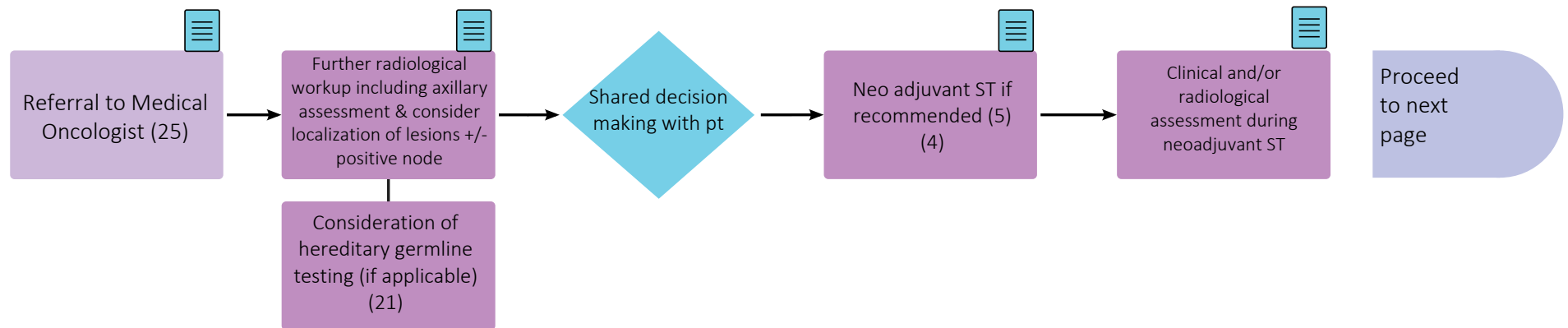


Throughout treatment, consider...



Regular symptom & performance status assessment (15); Supportive care (2, 16); Sexual & reproductive health (17, 18, 19); Co-morbidity management & medication review; Risk factor mitigation; Clinical trials (where applicable) (6); Goals of care (20); Cultural safety (1); Involvement of PCP, Consider eligibility for genetic testing based on tumor characteristics, family history and ancestry (21)

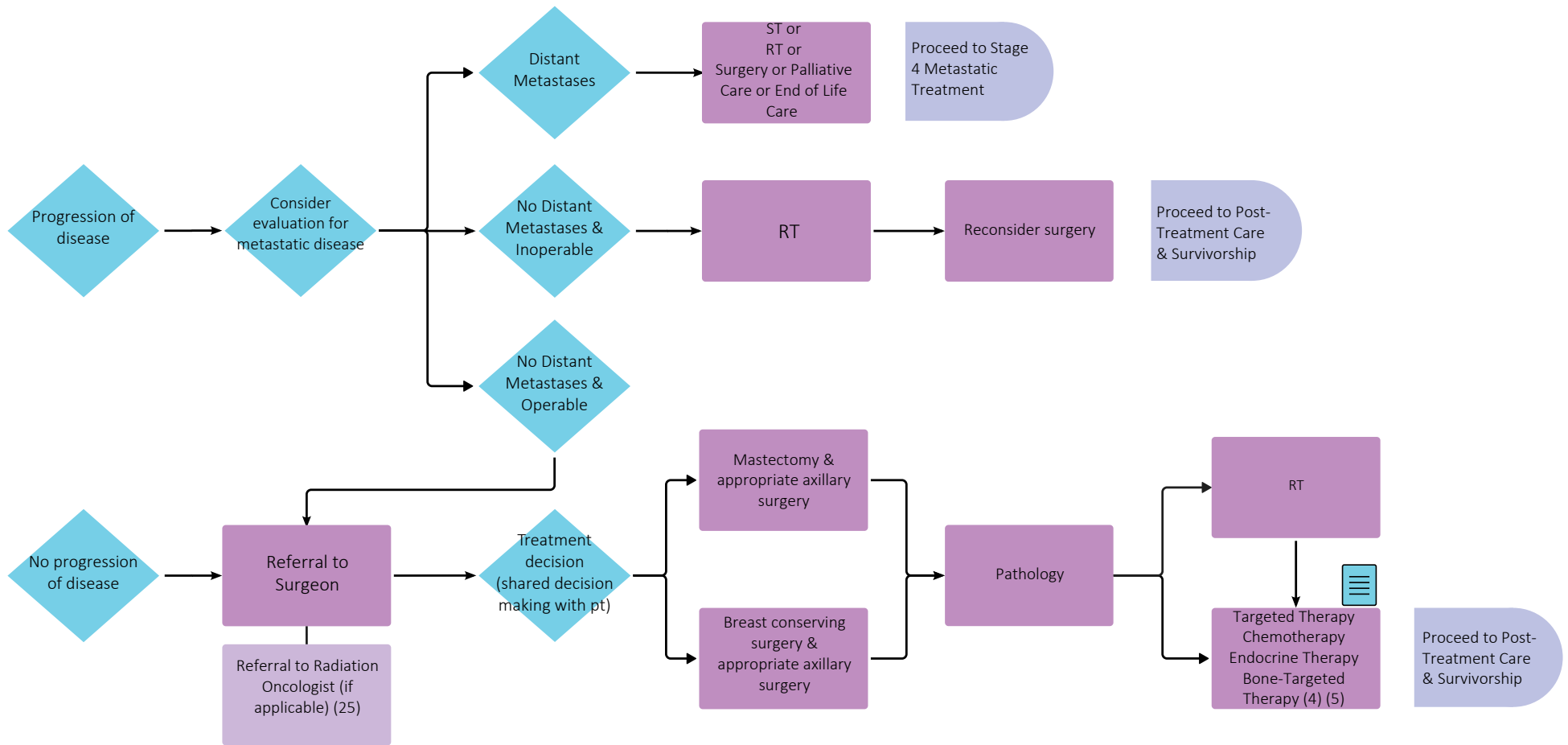
Treatment (Neoadjuvant Systemic Treatment) (Pg. 1)



Throughout treatment, consider...

Regular symptom & performance status assessment (15); Supportive care (2, 16); Sexual & reproductive health (17, 18, 19); Co-morbidity management & medication review; Risk factor mitigation; Clinical trials (where applicable) (6); Goals of care (20); Cultural safety (1); Involvement of PCP, Consider eligibility for genetic testing based on tumor characteristics, family history and ancestry (21)

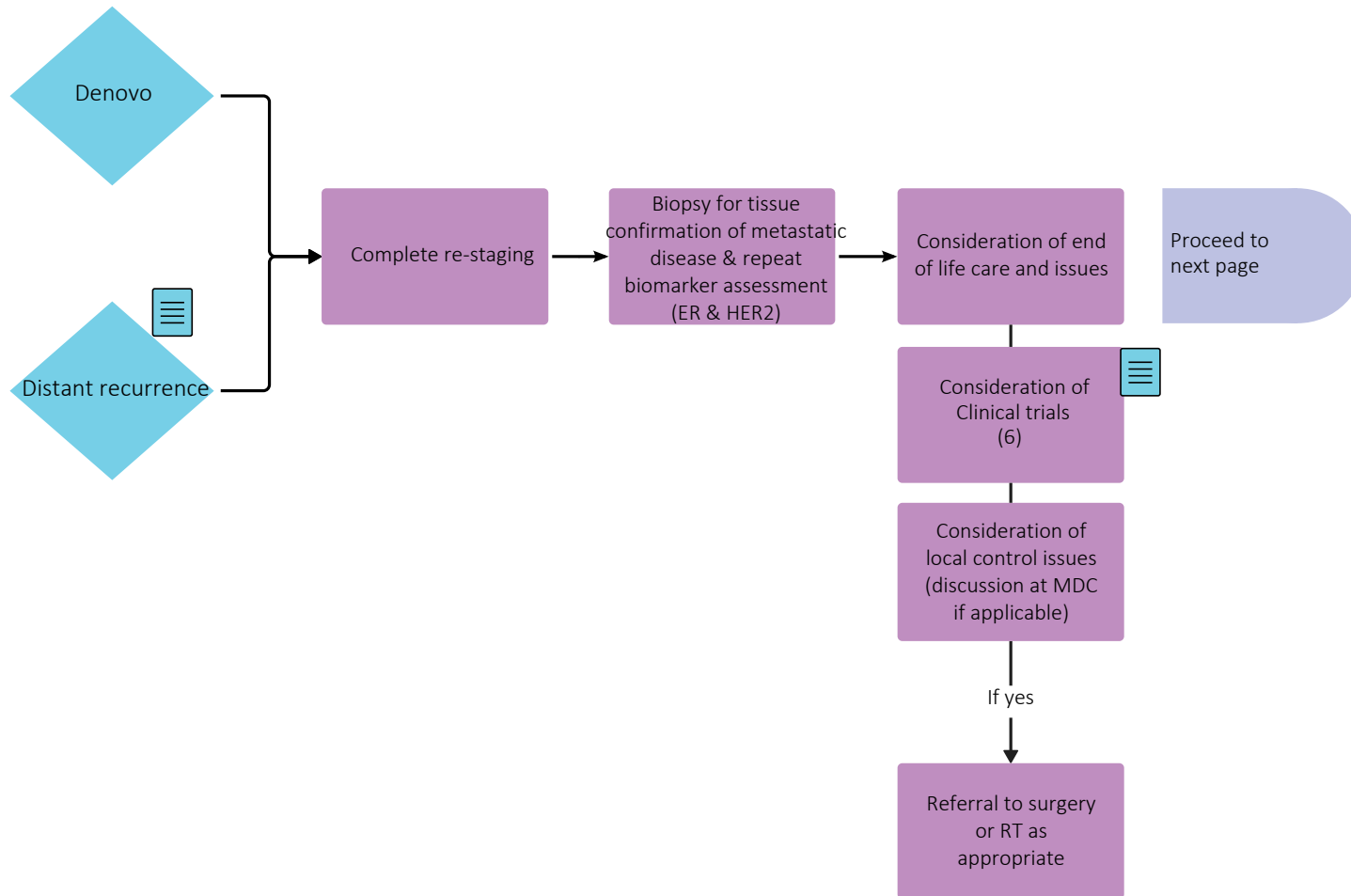
Treatment (Neoadjuvant Systemic Treatment) (Pg. 2)



Throughout treatment, consider...

Regular symptom & performance status assessment (15); Supportive care (2, 16); Sexual & reproductive health (17, 18, 19); Co-morbidity management & medication review; Risk factor mitigation; Clinical trials (where applicable) (6); Goals of care (20); Cultural safety (1); Involvement of PCP, Consider eligibility for genetic testing based on tumor characteristics, family history and ancestry (21)

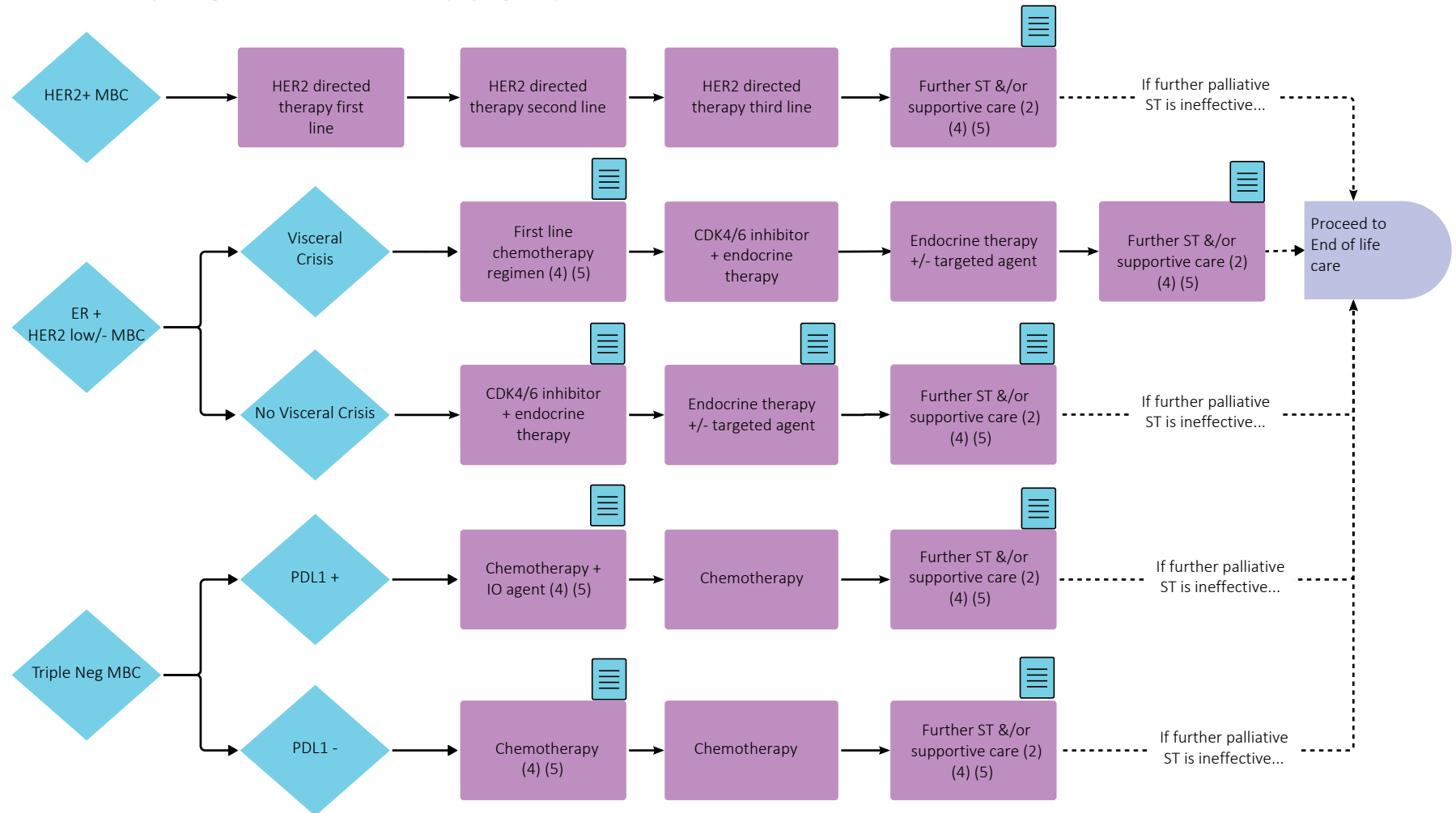
Treatment (Stage 4 Metastatic) (Pg. 1)



Throughout treatment, consider...

Regular symptom & performance status assessment (15); Supportive care (2, 16); Sexual & reproductive health (17, 18, 19); Co-morbidity management & medication review; Risk factor mitigation; Clinical trials (where applicable) (6); Goals of care (20); Cultural safety (1); Involvement of PCP, Consider eligibility for genetic testing based on tumor characteristics, family history and ancestry (21)

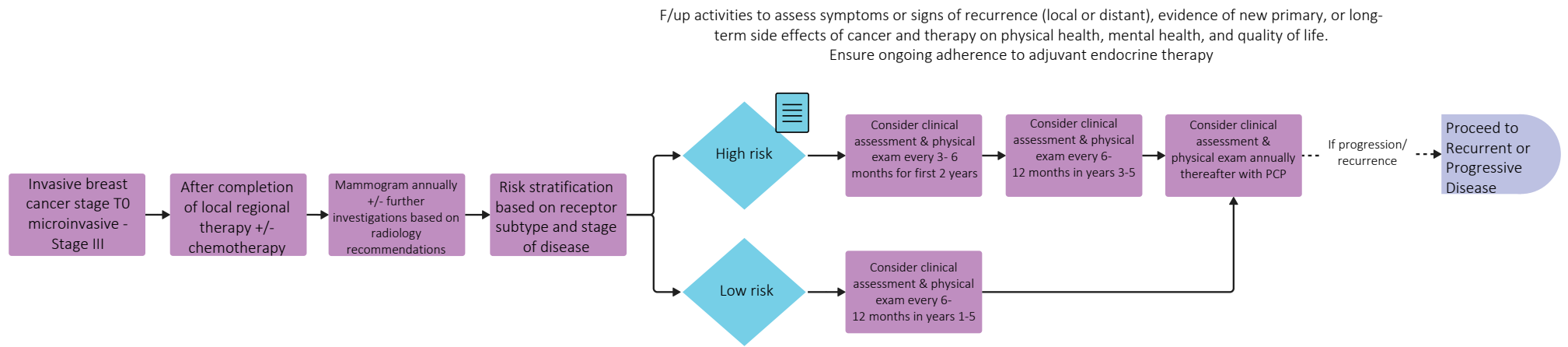
Treatment (Stage 4 Metastatic) (Pg. 2)



Throughout treatment, consider...

Regular symptom & performance status assessment (15); Supportive care (2, 16); Sexual & reproductive health (17, 18, 19); Co-morbidity management & medication review; Risk factor mitigation; Clinical trials (where applicable) (6); Goals of care (20); Cultural safety (1); Involvement of PCP, Consider eligibility for genetic testing based on tumor characteristics, family history and ancestry (21)

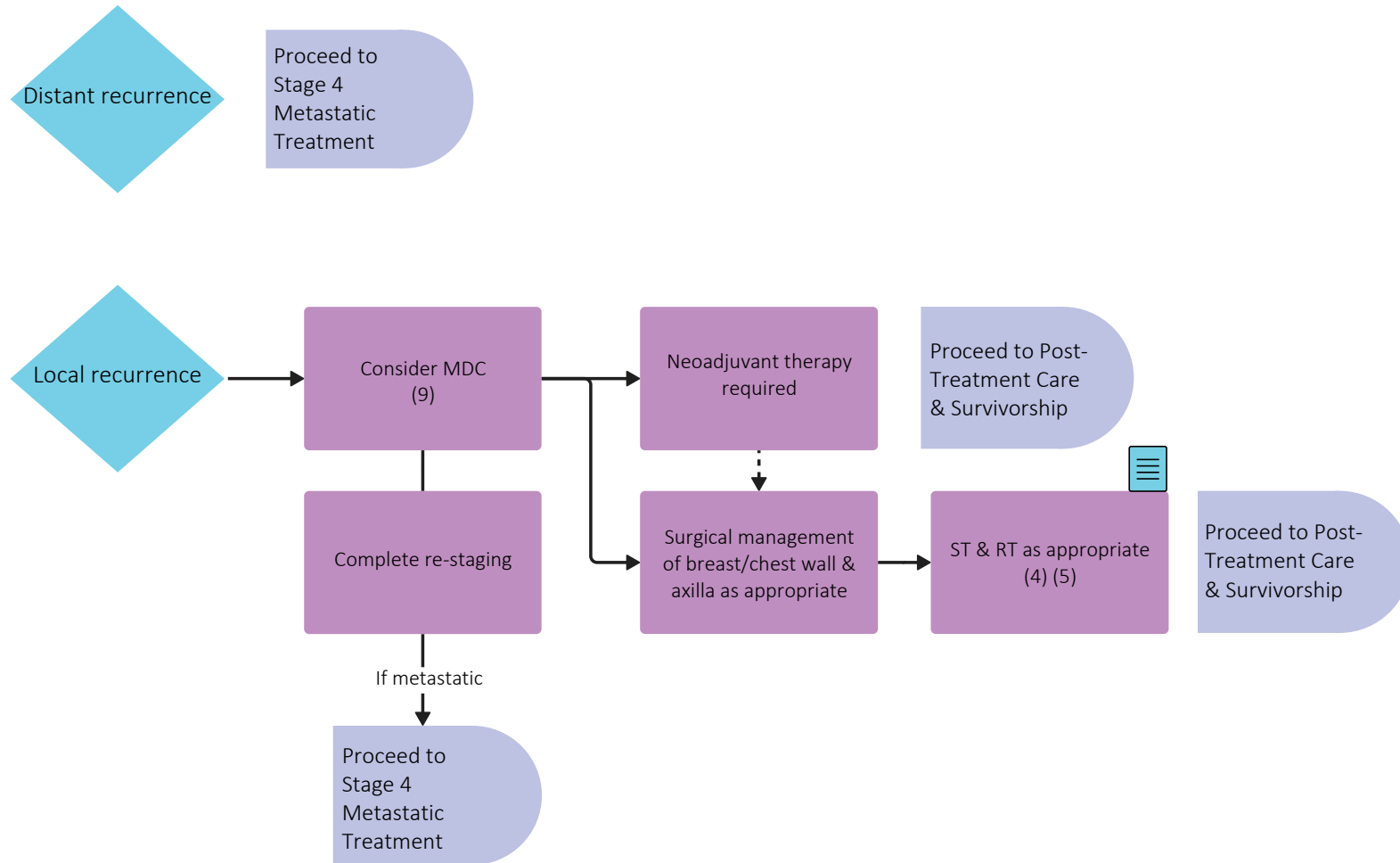
Post Treatment Care & Survivorship



Throughout treatment, consider...

Regular symptom & performance status assessment (15); Supportive care (2, 16); Sexual & reproductive health (17, 18, 19); Co-morbidity management & medication review; Risk factor mitigation; Clinical trials (where applicable) (6); Goals of care (20); Cultural safety (1); Involvement of PCP, Consider eligibility for genetic testing based on tumor characteristics, family history and ancestry (21)

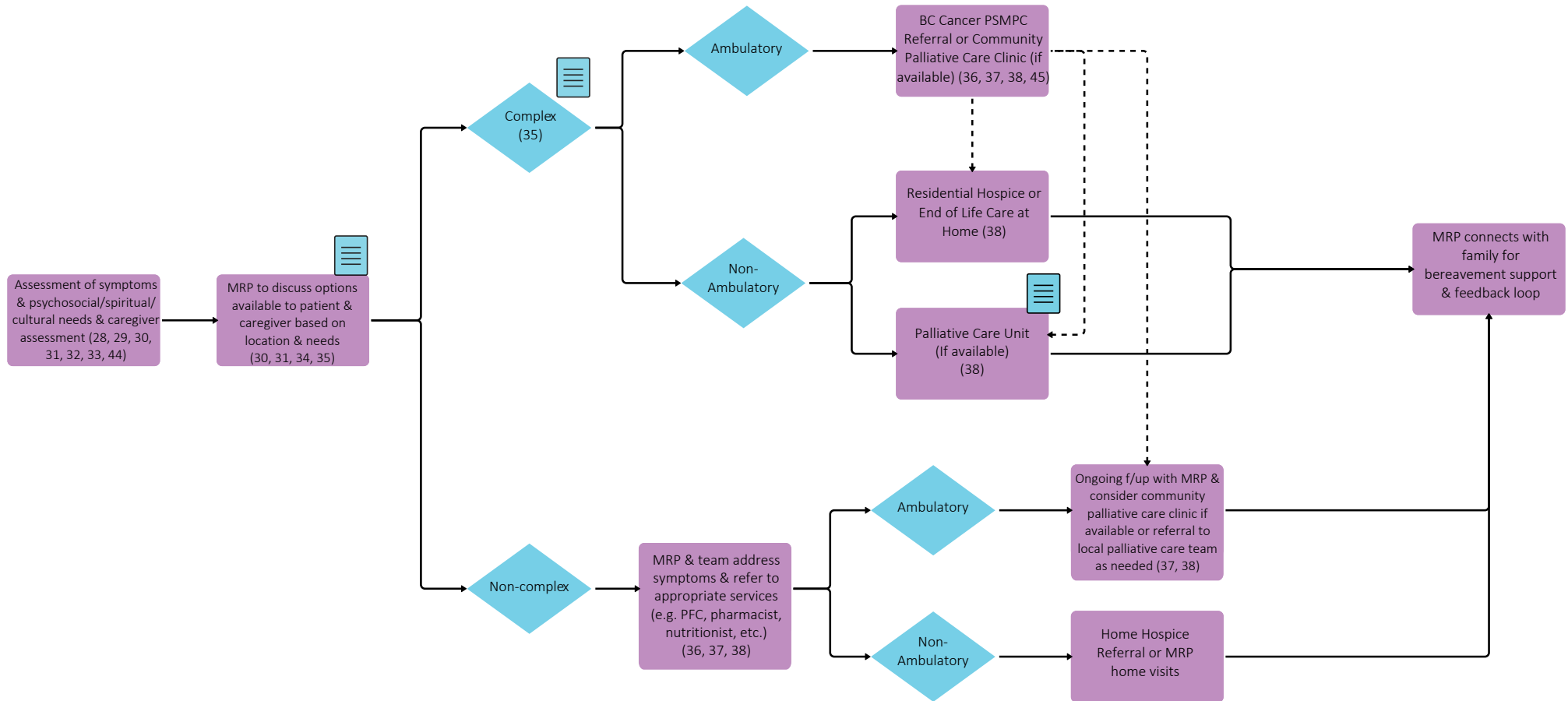
Recurrent or Progressive Disease



Throughout treatment, consider...

Regular symptom & performance status assessment (15); Supportive care (2, 16); Sexual & reproductive health (17, 18, 19); Co-morbidity management & medication review; Risk factor mitigation; Clinical trials (where applicable) (6); Goals of care (20); Cultural safety (1); Involvement of PCP, Consider eligibility for genetic testing based on tumor characteristics, family history and ancestry (21)

End of Life Care



Throughout treatment, consider...

Goals of Care Discussions & Consideration of Cultural Safety (1, 34, 35, 39, 40, 41, 42, 43)

Subject Matter Expert Working Group & COIs

Stephen Chia, Project Lead, Medical Oncologist
COI Pending

Anise Barton, Surgeon
No disclosures

Thao Nguyen, Medical Oncologist
AstraZeneca, Merck, Pfizer, Novartis, Michael Smith
Foundation For Clinical Research and Crystal Gala
Foundation

Tanya Berrang, Radiation Oncologist
No disclosures

Brenda Farnquist, Radiologist
COI Pending

Zuzana Kos, Pathologist
AstraZeneca, Daiichi Sankyo, Eli Lilly

Elaine McKeivitt, Surgeon
Canadian Breast Cancer Conference, Roche Canada, CIHR

Tamara Shenkier, Medical Oncologist
AZ, Novartis, Pfizer, Roche, CCTG, Gilead

Charlotte Yong-Hing, Radiologist
BC Radiological Society

Jack Zhang, Radiation Oncologist
COI Pending

Pathway Program Team

Bhatia Yashpal, Tumour Group Coordinator, Provincial Programs
Currie Tammy, Executive Director, Provincial Programs
Ladak Amilya, Policy Analyst, Tumour Groups
Loudon James, Director, Provincial Programs
Nanji Shaifa, Manager, Tumour Groups
Simmons Christine, Tumour Group Council Chair
Wai Elaine, Senior Executive Director, Medical Affairs and Quality

Other Stakeholders

Family Practice & GPO
Indigenous Cancer Control
Nursing Community of Practice (NCoP)
Patient and Family Experience Team & Supportive Care
Radiation Therapists
Surgical Oncology Network
Provincial Pharmacy, Pathology & Medical Imaging Teams

Appendix

1. <http://www.phsa.ca/aboriginal-health-site/Documents/IPN%20Fillable%20Referral%20Form.pdf>
2. <http://www.bccancer.bc.ca/our-services/services/supportive-care>
3. <https://cap.phsa.ca/>
4. <http://www.bccancer.bc.ca/health-professionals/clinical-resources/chemotherapy-protocols/breast>
5. <http://www.bccancer.bc.ca/systemic-therapy-site/Documents/Policy%20and%20Forms/Patient%20assistance%20programs.pdf>
6. <https://www.bccrc.ca/dept/cid/clinical-trials>
7. <http://www.bccancer.bc.ca/health-professionals/clinical-resources/smoking-cessation-program>
8. <http://www.bccancer.bc.ca/prevent/alcohol/reduce-your-risk>
9. <http://www.bccancer.bc.ca/books/Documents/Clinical%20Care%20Pathways/Patient%20Conference%20Order.pdf>
10. <http://www.bccancer.bc.ca/health-professionals/clinical-resources/pharmacy#Contact--info>
11. <http://www.bccancer.bc.ca/screening/breast>
12. <http://www.bccancer.bc.ca/screening/Documents/Screening-Guidelines.pdf>
13. <http://www.bccancer.bc.ca/health-professionals/clinical-resources/hereditary-cancer/high-risk-clinic>
14. https://www.nccn.org/professionals/physician_gls/pdf/breast-screening.pdf
15. <https://www.uptodate.com/contents/image?imageKey=HEME%2F72901>
16. <http://www.bccancer.bc.ca/our-services/services/support-programs>
17. <https://www.olivefertility.com/referring-physicians>
18. <https://www.pacificfertility.ca/physician-resources>
19. <http://www.bccancer.bc.ca/health-info/coping-with-cancer/managing-symptoms-side-effects/sexual-health>
20. <http://www.bccancer.bc.ca/new-patients-site/Documents/ACP-goals-of-care-orders.pdf>
21. <http://www.bccancer.bc.ca/health-professionals/clinical-resources/hereditary-cancer>
22. <https://www.breastsurgeons.org/docs/statements/Consensus-Guideline-on-Concordance-Assessment-of-Image-Guided-Breast-Biopsies.pdf?v2>
23. <https://bcmj.org/articles/current-evaluation-breast-health-concerns-and-diagnosis-breast-cancer>
24. <https://link.springer.com/article/10.1245/s10434-016-5449-z>
25. <http://www.bccancer.bc.ca/health-professionals-site/Documents/Patient-Referral-Form.pdf>
26. <http://www.bccancer.bc.ca/health-professionals/networks/surgery-network>
27. <https://www.cancercareontario.ca/en/guidelines-advice/types-of-cancer/1096>
28. <http://www.bccancer.bc.ca/our-services/centres-clinics/bc-cancer-vancouver/epicc>
29. https://www2.gov.bc.ca/assets/gov/health/practitioner-pro/bc-guidelines/palliative1_appendix_a.pdf
30. <https://www.bc-cpc.ca/publications/symptom-management-guidelines/>
31. <https://www2.gov.bc.ca/gov/content/health/practitioner-professional-resources/bc-guidelines/palliative-care>
32. <https://www2.gov.bc.ca/gov/content/health/practitioner-professional-resources/pharmacare/prescribers/plan-p-bc-palliative-care-benefits-program>
33. <http://www.bccancer.bc.ca/our-services/services/indigenous-cancer-control>
34. <http://www.bccancer.bc.ca/new-patients-site/Documents/SeriousIllnessConversationGuideCard.pdf>
35. <http://www.phsa.ca/health-info/medical-assistance-in-dying>
36. <http://www.bccancer.bc.ca/managing-symptoms-site/Documents/PSMPC-Referral-Form-for-All-BC-Cancer-Centres.pdf>
37. <http://www.bccancer.bc.ca/our-services/services/supportive-care/pain-symptom-management#What--we--do>
38. https://vancouver.pathwaysbc.ca/service_categories/24
39. <http://www.bccancer.bc.ca/new-patients-site/Documents/Goals%20of%20Care%20Orders%20Form%20June%202018%20Final.pdf>
40. <https://www2.gov.bc.ca/assets/gov/people/seniors/health-safety/pdf/myvoice-advancecareplanningguide.pdf>
41. <https://www2.gov.bc.ca/gov/content/family-social-supports/seniors/health-safety/advance-care-planning>
42. <http://www.bccancer.bc.ca/managing-symptoms-site/Documents/When-Life-Nearing-its-End.pdf>
43. <http://www.bccancer.bc.ca/new-patients-site/Documents/ACP-tips-for-oncology-professionals.pdf>
44. <http://www.bccancer.bc.ca/books/Documents/Clinical%20Care%20Pathways/Revised%20PSMPC%20Questionnaire%20Pink%20Form%202020-21.pdf>
45. http://www.bccancer.bc.ca/new-patients-site/Documents/MIPPC_Referral_Form.pdf
46. <http://www.phsa.ca/health-professionals/professional-resources/language-services/translation>